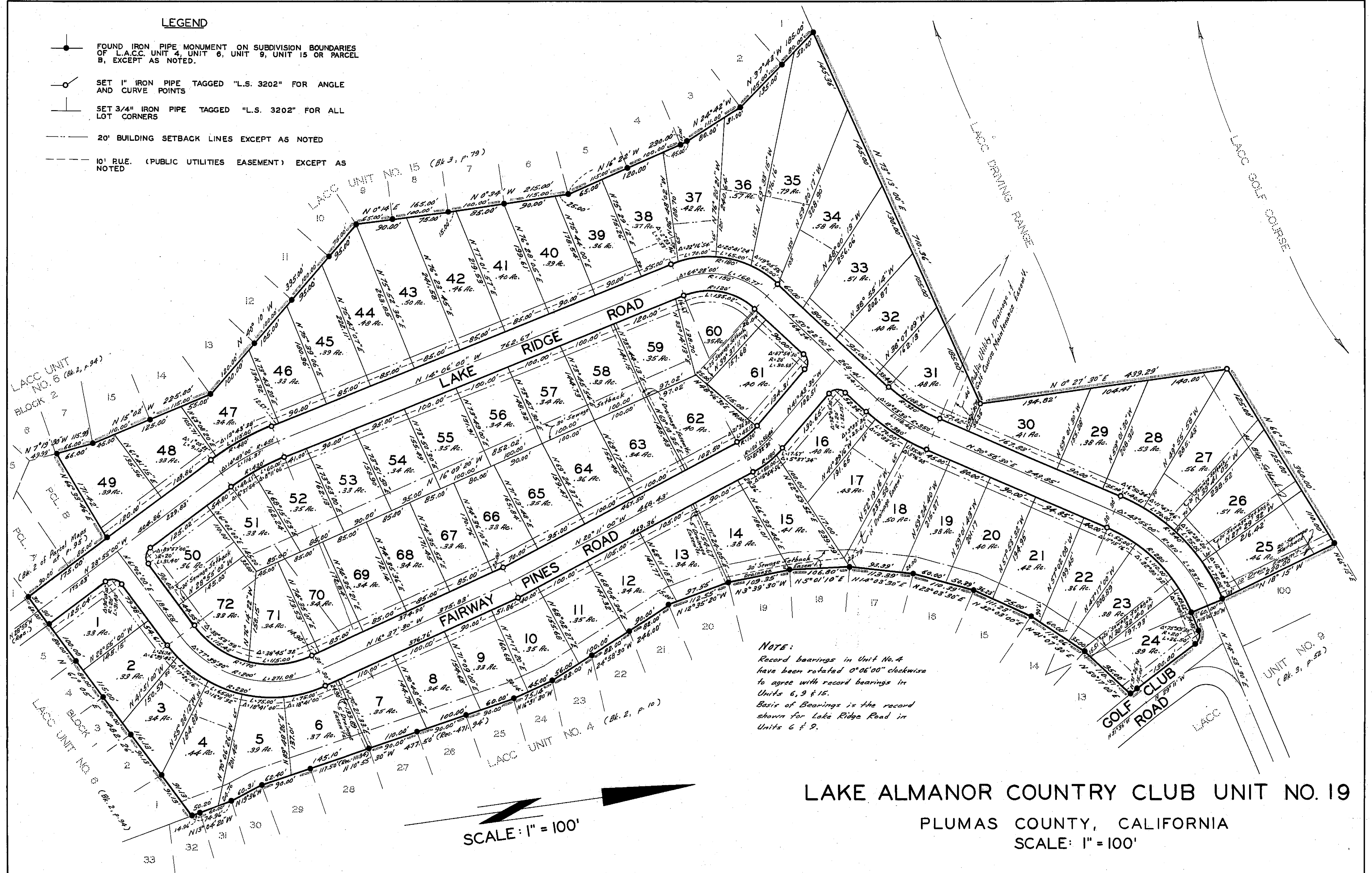


LEGEND

- FOUND IRON PIPE MONUMENT ON SUBDIVISION BOUNDARIES OF L.A.C.C. UNIT 4, UNIT 6, UNIT 9, UNIT 15 OR PARCEL B, EXCEPT AS NOTED.
- SET 1" IRON PIPE TAGGED "L.S. 3202" FOR ANGLE AND CURVE POINTS
- └ SET 3/4" IRON PIPE TAGGED "L.S. 3202" FOR ALL LOT CORNERS
- 20' BUILDING SETBACK LINES EXCEPT AS NOTED
- - - 10' R.U.E. (PUBLIC UTILITIES EASEMENT) EXCEPT AS NOTED



NOTE:
 Record bearings in Unit No. 4
 have been rotated 0°06'00" clockwise
 to agree with record bearings in
 Units 6, 9 & 15.
 Basis of Bearings is the record
 shown for Lake Ridge Road in
 Units 6 & 9.

LAKE ALMANOR COUNTRY CLUB UNIT NO. 19
 PLUMAS COUNTY, CALIFORNIA
 SCALE: 1" = 100'