

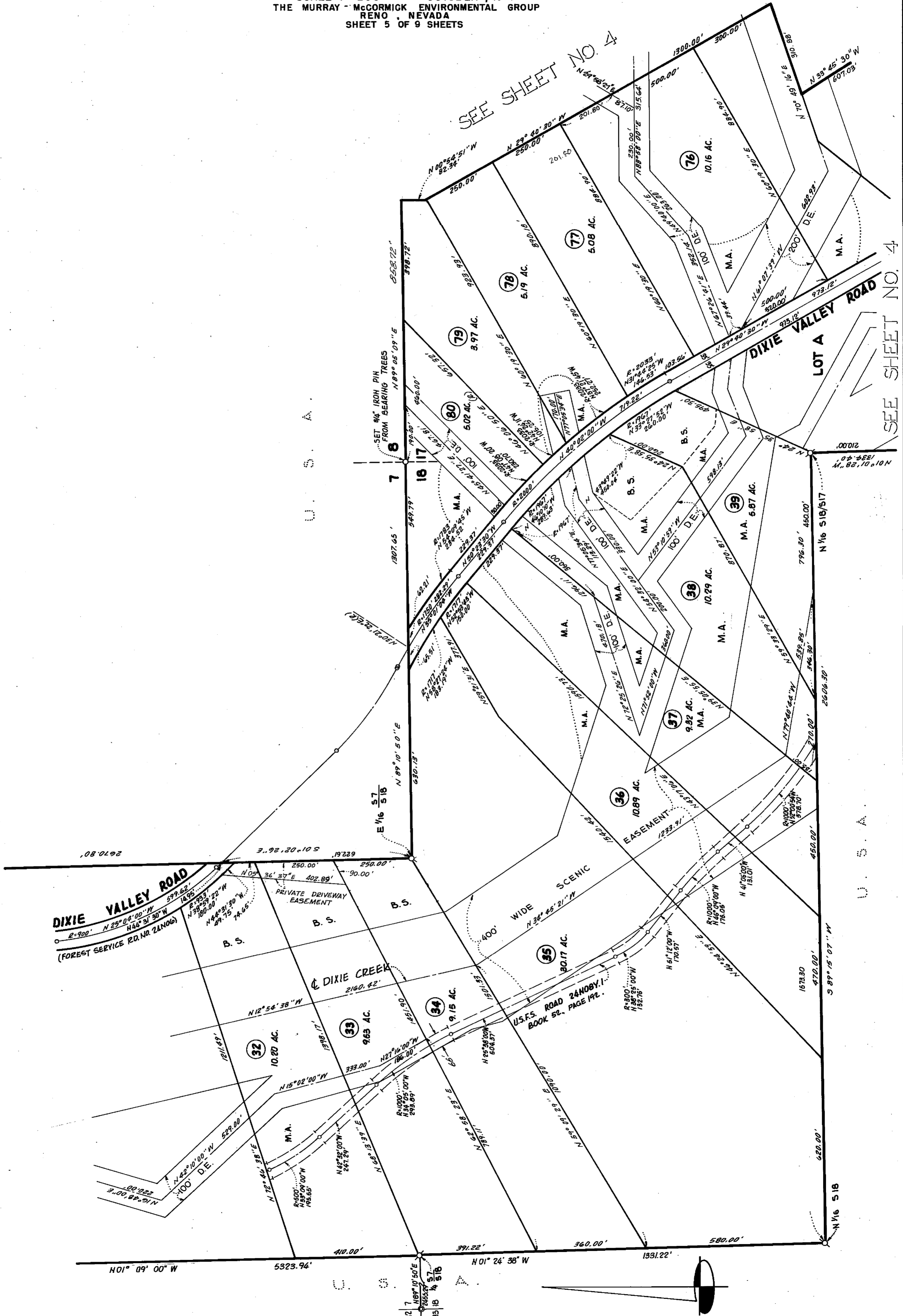
DIXIE VALLEY PROPERTIES UNIT 1

BEING A PORTION OF
 SECTIONS 6, 7, 17, 18, 20 AND 21
 TOWNSHIP 24 NORTH, RANGE 15 EAST, M.D.M.
 PLUMAS COUNTY, CALIFORNIA
 SCALE: 1" = 200'
 OCTOBER, 1971
 THE MURRAY-McCORMICK ENVIRONMENTAL GROUP
 RENO, NEVADA
 SHEET 5 OF 9 SHEETS

SEE SHEET NO. 6

SEE SHEET NO. 4

SEE SHEET NO. 4



6 M 7