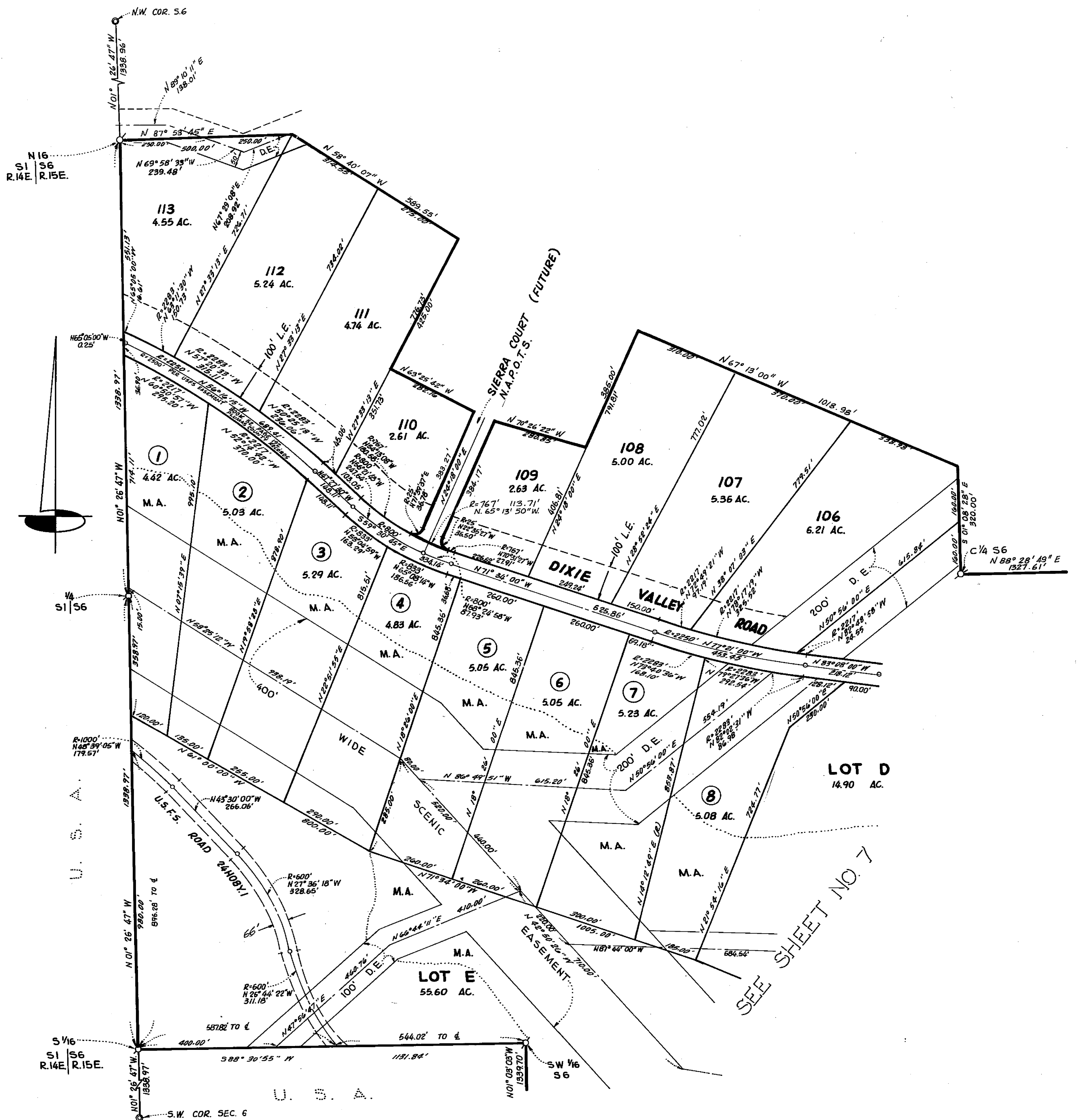


# DIXIE VALLEY PROPERTIES UNIT 1

BEING A PORTION OF  
 SECTIONS 6, 7, 17, 18, 20 AND 21  
 TOWNSHIP 24 NORTH, RANGE 15 EAST, M.D.M.  
 PLUMAS COUNTY, CALIFORNIA  
 SCALE: 1" = 200'      OCTOBER, 1971  
 THE MURRAY-McCORMICK ENVIRONMENTAL GROUP  
 RENO, NEVADA  
 SHEET 8 OF 9 SHEETS



4 M 12