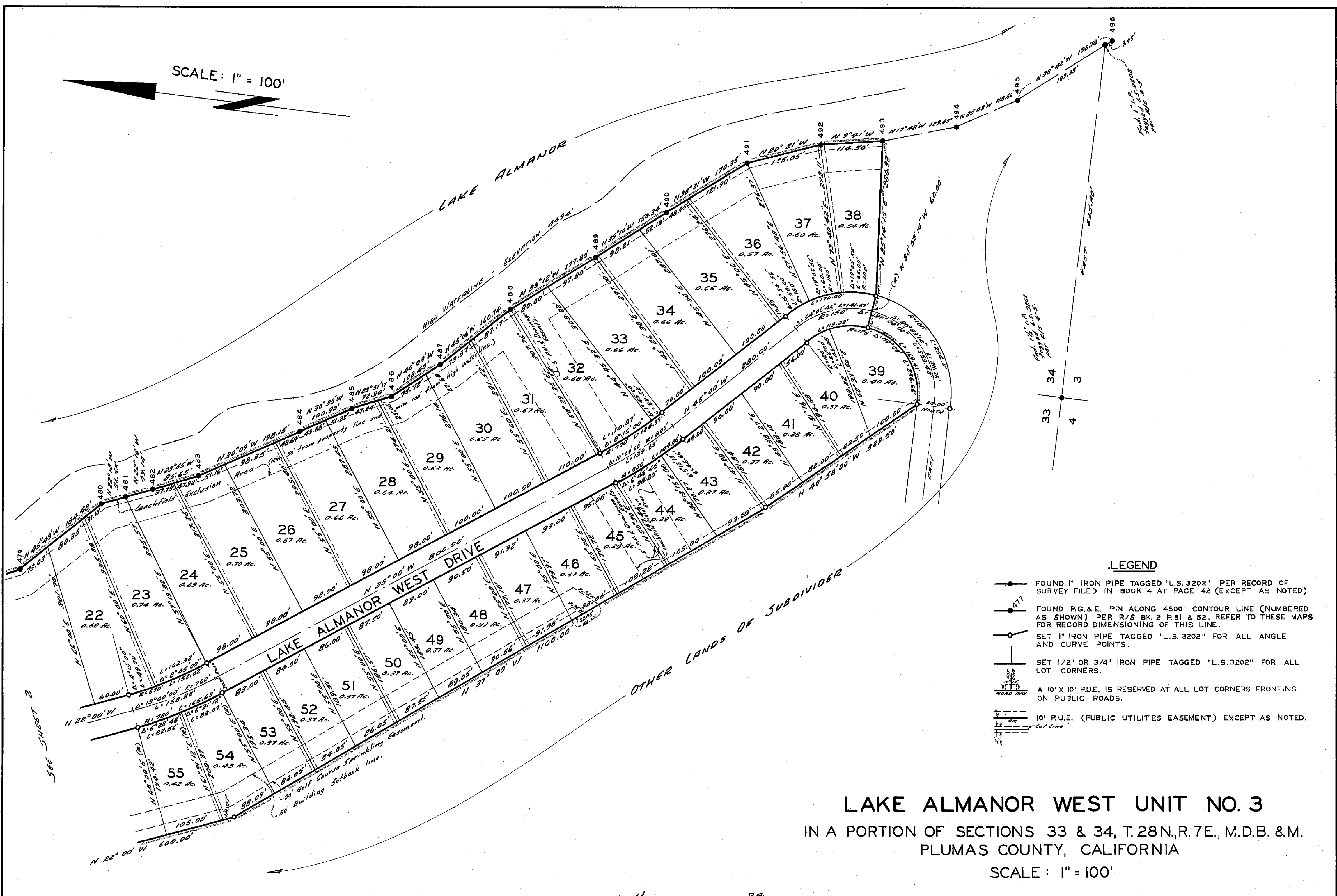


SCALE: 1" = 100'



LEGEND

- FOUND 1" IRON PIPE TAGGED "L.S. 3202" PER RECORD OF SURVEY FILED IN BOOK 4 AT PAGE 42 (EXCEPT AS NOTED)
- FOUND P.G. & E. PIN ALONG 4500' CONTOUR LINE (NUMBERED AS SHOWN) PER R/S BK. 2 P. 51 & 52. REFER TO THESE MAPS FOR RECORD DIMENSIONING OF THIS LINE.
- SET 1" IRON PIPE TAGGED "L.S. 3202" FOR ALL ANGLE AND CURVE POINTS.
- SET 1/2" OR 3/4" IRON PIPE TAGGED "L.S. 3202" FOR ALL LOT CORNERS.
- A 10' X 10' P.U.E. IS RESERVED AT ALL LOT CORNERS FRONTING ON PUBLIC ROADS.
- 10' P.U.E. (PUBLIC UTILITIES EASEMENT) EXCEPT AS NOTED.

LAKE ALMANOR WEST UNIT NO. 3
 IN A PORTION OF SECTIONS 33 & 34, T.28N., R.7E., M.D.B. & M.
 PLUMAS COUNTY, CALIFORNIA
 SCALE: 1" = 100'

RECORDED IN BOOK 4 OF MAPS AT PAGE 89

SHEET 3 OF 3

76-48

4 M 89