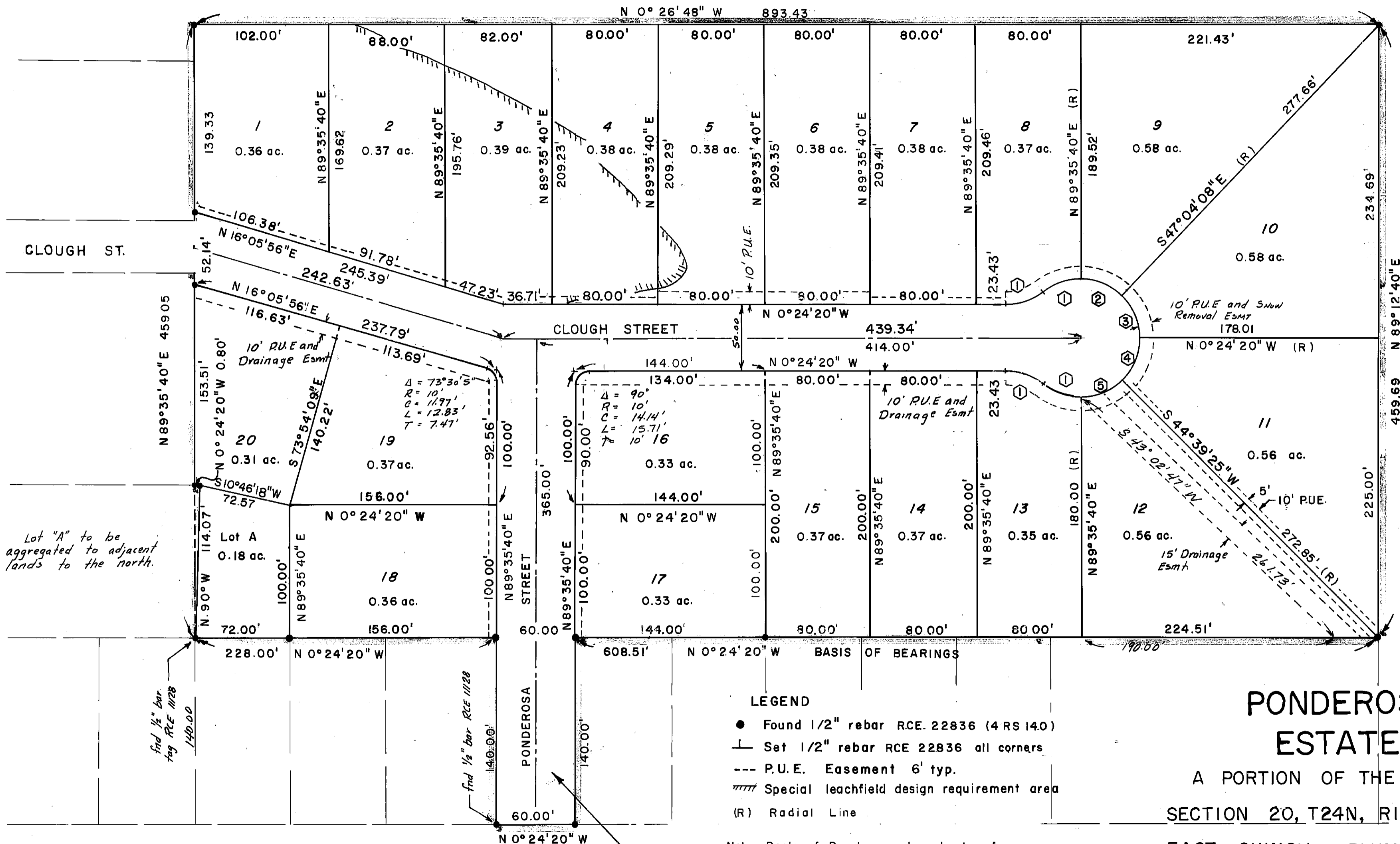


Scale 1" = 50'



- ① Δ = 38°56'33"
R = 45.00'
T = 15.91'
L = 30.59'
C = 30.00'
- ② Δ = 43°20'
R = 45.00'
C = 33.23'
L = 34°03'
T = 17.88'
- ③ Δ = 46°39'48"
R = 45.00'
C = 35.64'
L = 36.65'
T = 19.41'
- ④ Δ = 44°15'05"
R = 45.00'
C = 33.90'
L = 34.75'
T = 18.30'
- ⑤ Δ = 44°56'15"
R = 45.00'
C = 34.40'
L = 35.29'
T = 18.61'

Lot "A" to be aggregated to adjacent lands to the north.

Find 1/2" bar tag RCE 1128 140.00'

Find 1/2" bar RCE 1128 140.00'

LEGEND

- Found 1/2" rebar RCE. 22836 (4 RS 140)
- └ Set 1/2" rebar RCE 22836 all corners
- P.U.E. Easement 6' typ.
- Special leachfield design requirement area
- (R) Radial Line

PONDEROSA ESTATES

A PORTION OF THE N.W. 1/4 OF SECTION 20, T24N, R10E MDB & M EAST QUINCY, PLUMAS COUNTY CALIFORNIA