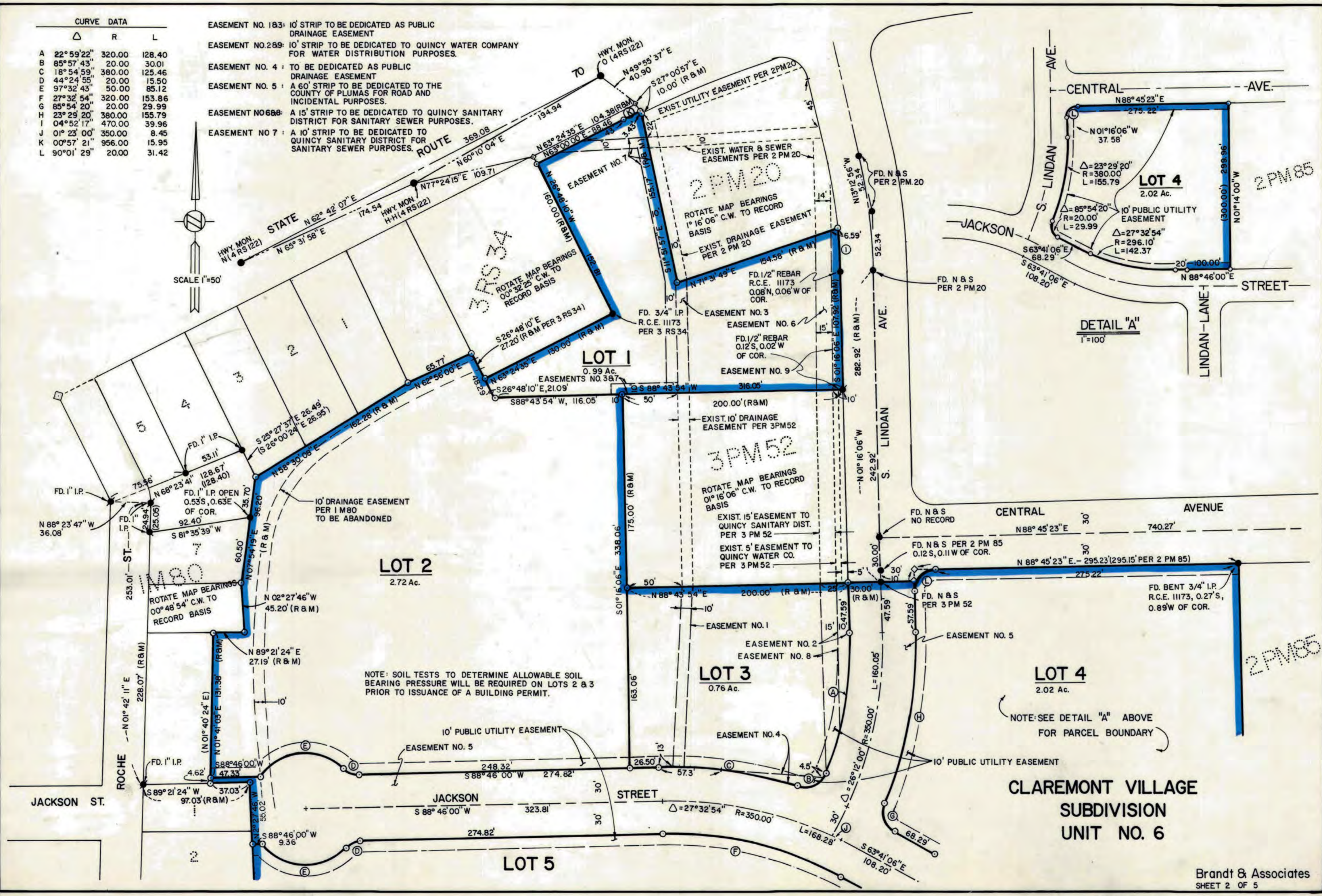
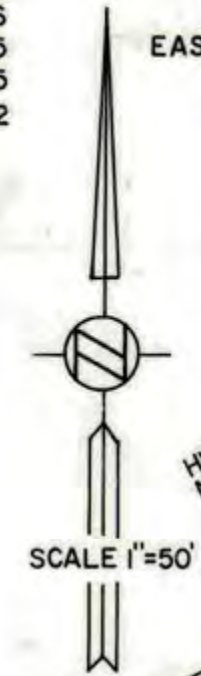


CURVE DATA		
Δ	R	L
A	22° 59' 22"	320.00
B	85° 57' 43"	20.00
C	18° 54' 59"	380.00
D	44° 24' 55"	20.00
E	97° 32' 43"	50.00
F	27° 32' 54"	320.00
G	85° 54' 20"	20.00
H	23° 29' 20"	380.00
I	04° 52' 17"	470.00
J	01° 23' 00"	350.00
K	00° 57' 21"	956.00
L	90° 01' 29"	20.00

- EASEMENT NO. 183: 10' STRIP TO BE DEDICATED AS PUBLIC DRAINAGE EASEMENT
- EASEMENT NO. 289: 10' STRIP TO BE DEDICATED TO QUINCY WATER COMPANY FOR WATER DISTRIBUTION PURPOSES.
- EASEMENT NO. 4: TO BE DEDICATED AS PUBLIC DRAINAGE EASEMENT
- EASEMENT NO. 5: A 60' STRIP TO BE DEDICATED TO THE COUNTY OF PLUMAS FOR ROAD AND INCIDENTAL PURPOSES.
- EASEMENT NO. 688: A 15' STRIP TO BE DEDICATED TO QUINCY SANITARY DISTRICT FOR SANITARY SEWER PURPOSES.
- EASEMENT NO. 7: A 10' STRIP TO BE DEDICATED TO QUINCY SANITARY DISTRICT FOR SANITARY SEWER PURPOSES.



NOTE: SOIL TESTS TO DETERMINE ALLOWABLE SOIL BEARING PRESSURE WILL BE REQUIRED ON LOTS 2 & 3 PRIOR TO ISSUANCE OF A BUILDING PERMIT.

NOTE: SEE DETAIL "A" ABOVE FOR PARCEL BOUNDARY

**CLAREMONT VILLAGE  
SUBDIVISION  
UNIT NO. 6**