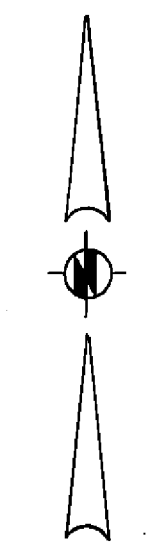
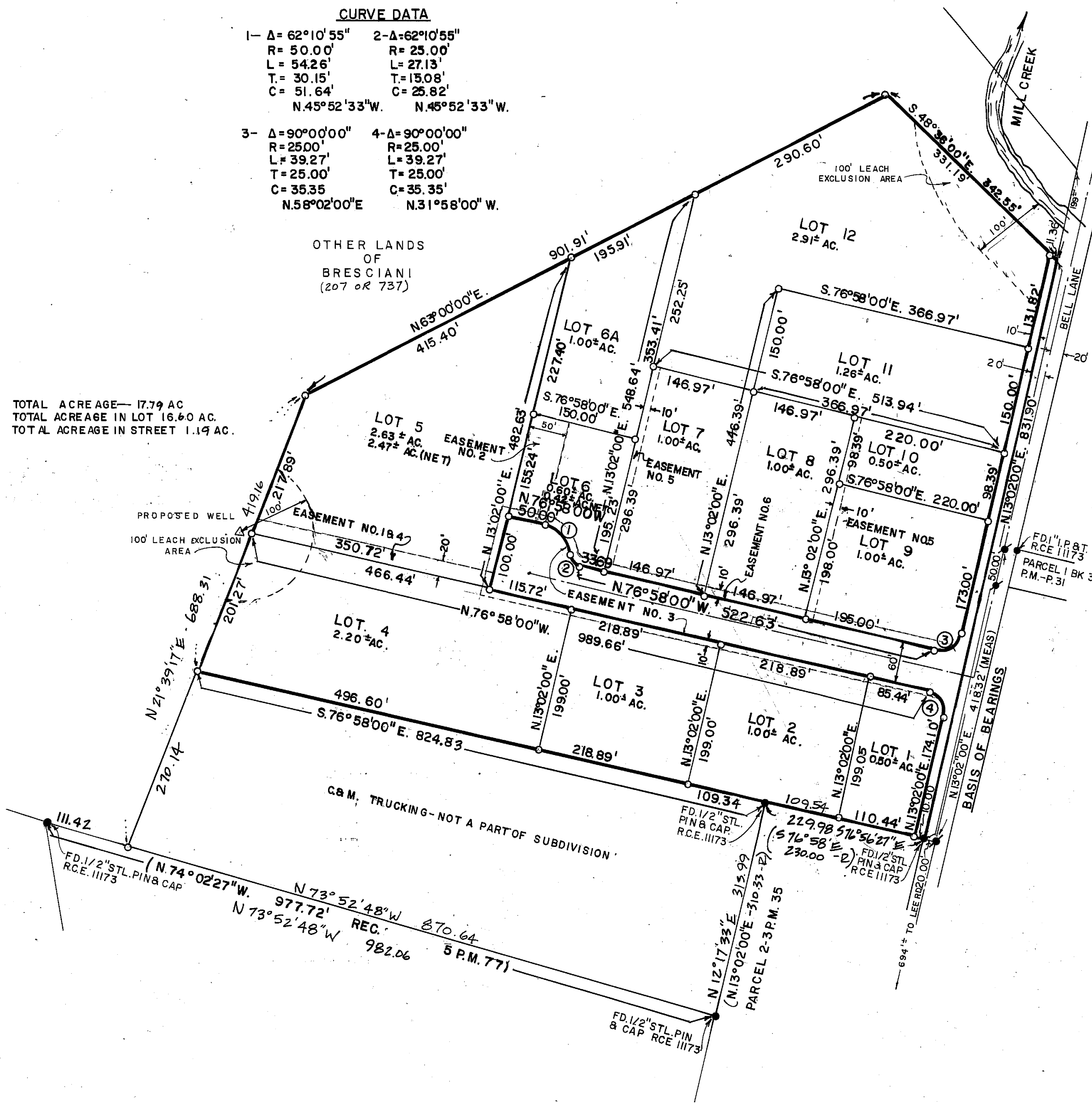


CURVE DATA

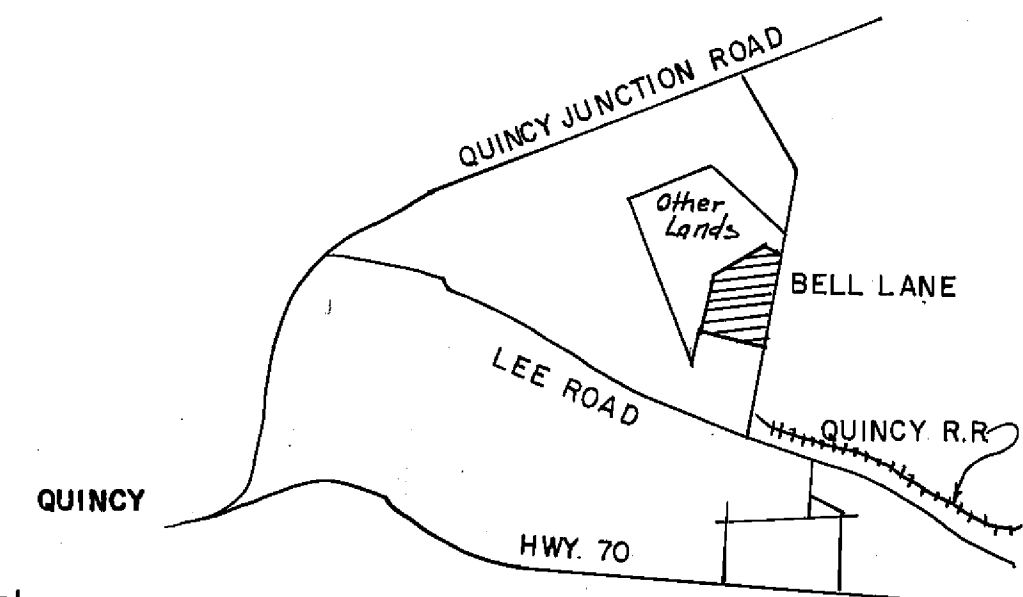
1- Δ=62°10'55"	2-Δ=62°10'55"
R= 50.00'	R= 25.00'
L= 54.26'	L= 27.13'
T= 30.15'	T= 15.08'
C= 51.64'	C= 25.82'
N.45°52'33"W.	N.45°52'33"W.
3- Δ=90°00'00"	4-Δ=90°00'00"
R=25.00'	R=25.00'
L= 39.27'	L= 39.27'
T= 25.00'	T= 25.00'
C= 35.35'	C= 35.35'
N.58°02'00"E	N.31°58'00"W.

OTHER LANDS
OF
BRESCIANI
(207 OR 737)

TOTAL ACREAGE— 17.79 AC
TOTAL ACREAGE IN LOT 16.60 AC.
TOTAL ACREAGE IN STREET 1.19 AC.



SCALE 1"=100'



LOCATION MAP
NO SCALE

LEGEND

- Found nail and shiner.
- Set 1/2" Steel Pin with plastic cap stamped R.O.E. 22836
- Found as noted
- Rec. Record (From deed, record map, etc.)
- Meas. Measured
- P.M. Parcel Map
- Bk. Book
- P. Page
- Ac. Acre
- R.C.E. Registered Civil Engineer
- (R & M) Record and Measured

NOTE

If during future construction development upon the lots shown herein, subsurface cultural material is encountered, a qualified archaeologist shall be notified before disturbance continues.

BRESCIANI INDUSTRIAL PARK
NE 1/4 SEC. 13, T.24N., R.9 E., M.D.M.
NW 1/4 SEC. 18, T.24N., R.10E., M.D.M.
PLUMAS COUNTY, CALIFORNIA