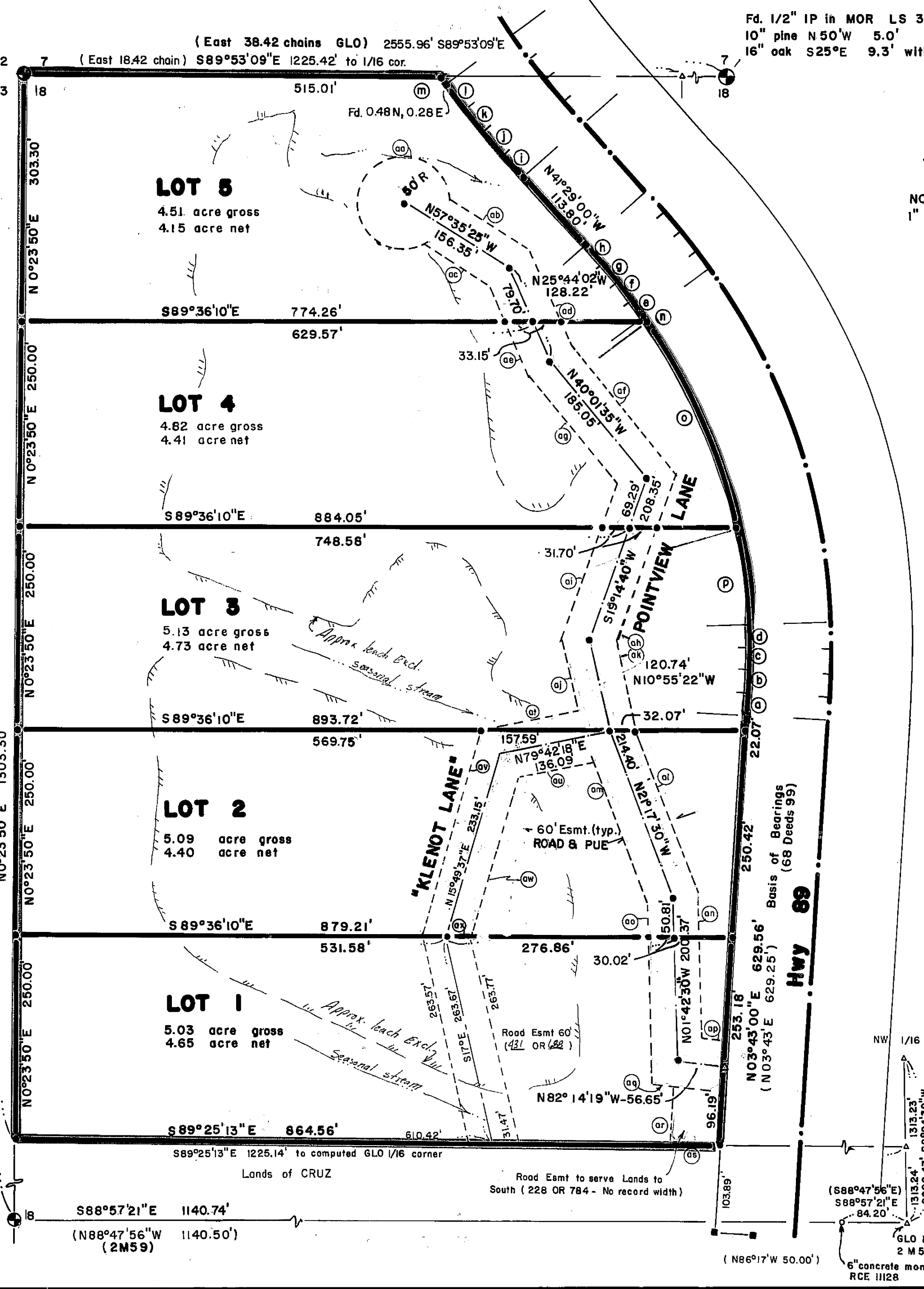


10" Doug Fir in stone
mnd. per 4 P.M. 102 for
section corner.
42" pine N75°E 13' w/k-tag
Old 24" pine stump 3.7' N10°W
Set tag RCE 22836 on east
side of tree



CURVE DATA						Centerline Data	
No	Radius	Δ	Chord	Bearing	Radius	Chord	
a	3337.75'	0°30'	29.13'	N 3°28'00"E	3437.75'	30.00'	
b	1618.87'	1°00'	28.25'	N 2°43'00"E	1718.87'	30.00'	
c	1045.92'	1°30'	27.38'	N 1°28'00"E	1145.92'	30.00'	
d	759.44'	2°00'	26.51'	N 0°17'00"W	859.44'	30.00'	
e	759.44'	2°00'	26.51'	N37°29'00"W	859.44'	30.00'	
f	1045.92'	1°30'	27.38'	N39°14'00"W	1145.92'	30.00'	
g	1618.87'	1°00'	28.25'	N 40°29'00"W	1718.87'	30.00'	
h	3337.75'	0°30'	29.13'	N 41°14'00"W	3437.75'	30.00'	
i	4097.38'	0°30'	35.76'	N 41°14'00"W	3997.38'	35.00'	
j	2110.38'	1°00'	36.83'	N 40°29'00"W	2010.38'	35.00'	
k	1432.48'	1°30'	37.50'	N 39°14'00"W	1332.48'	35.00'	
l	1102.26'	2°00'	38.48'	N37°29'00"W	1002.26'	35.00'	
m	959.44'	0°44'15"	12.35'	N36°06'35"W			
n	663.94'	1°18'23"	15.13'	N35°49'48"W			
o	663.94'	23°43'59"	273.06'	N23°18'40"W			
p	663.94'	10°09'38"	117.58'	N 6°21'54"W			

(R = 763.94' Δ = 35°12' L = 469.33')

LEGEND		AREA OF SUBDIVISION	
■	Fd. 6" concrete Hwy monument	24.58	Acres Gross
●	Fd. Section Corner as noted	2.24	Acres Road
○	Fd monument as noted	22.34	Acres Net
●	Set 1/2" rebar tagged RCE 22836		
△	Calculated point		
()	Record per State Hwy. maps		
---	Approximate leach exclusion area		

NOTES:

- This division was approved as a Planned Unit Development. No further division or rezoning may be permitted without concurrence of all lot owners.
- Pointview Lane and Klenot Lane as shown hereon are private easements not subject to improvement or maintenance by Plumas County. Such easements will not become effective unless and until reservations and grants are included in the respective deeds.
- Leach exclusion areas include slopes over 30%; within 50' of seasonal water courses and lot lines, or 4:1 slope from cut banks; or as approved by Co. Sanitarian.

ROAD EASEMENT DATA			
Course	Distance	Bearing	
aa	-	-	R=50' Δ=286°15'36" L=249.81'
ab	124.91'	N57°35'25"W	
ac	107.79'	N57°35'25"W	
ad	133.02'	N25°44'02"W	
ae	123.42'	N25°44'02"W	
af	198.36'	N40°01'35"W	
ag	171.74'	N40°01'35"W	
ah	217.34'	N19°14'40"E	
ai	198.36'	N19°14'40"E	
aj	99.15'	N10°55'22"W	
ak	109.94'	N10°55'22"W	
al	216.90'	N21°17'30"W	
am	186.02'	N21°17'30"W	
an	180.11'	N01°42'30"W	
ao	220.63'	N01°42'30"W	
ap	29.05'	N82°14'19"W	
aq	84.25'	N82°14'19"W	
ar	-	-	no record width
as	-	-	no record width
at	124.52'	N79°42'18"E	
au	94.17'	N79°42'18"E	
av	259.32'	N15°49'37"E	
aw	206.79'	N15°49'37"E	
ax	31.12'	S89°36'10"E	

KLENOT SUBDIVISION
and PLANNED UNIT DEVELOPMENT
Portion NW 1/4 Section 18, T26N R10E MDBM
Plumas County, Calif.

1" I.P. in MOR Set tag RCE 22836
Fence corner S10°W 4.5'
18" Oak w/k-tag "7-11-49 AB"
and "PCRD 1-24-79" S83°E
18 links (11.9')
Elec pole N88°E 15'
16" Oak N20°E 29.4'