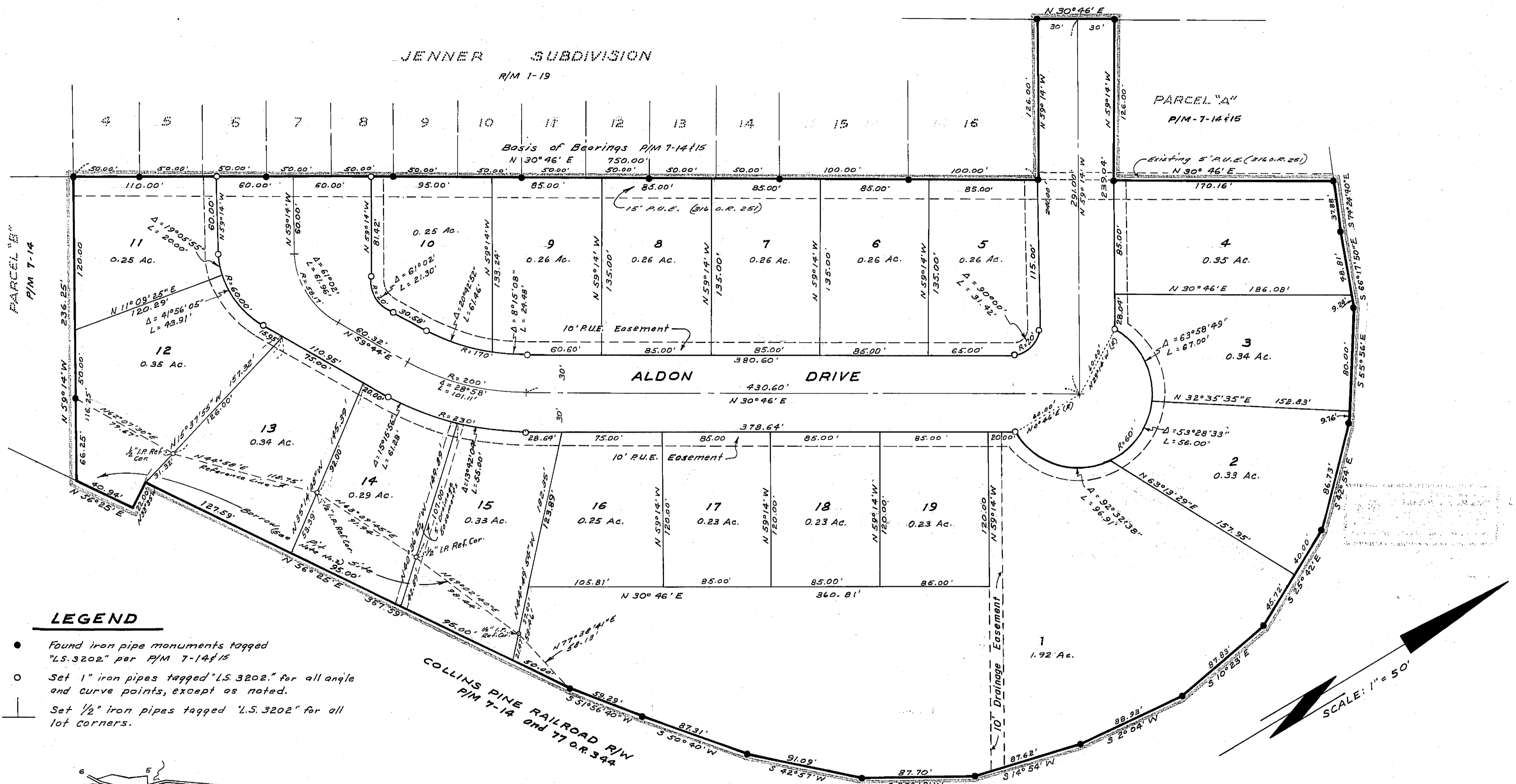


CALIF. STATE HWY. 36

JENNER SUBDIVISION

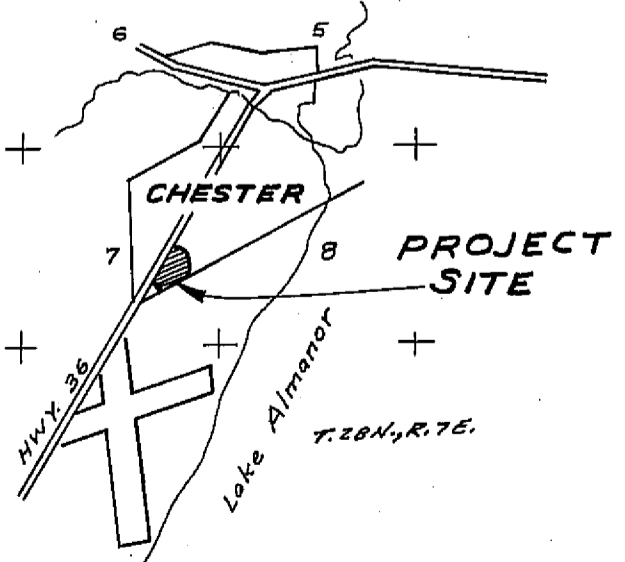
R/M 1-19

Basis of Bearings P/M 7-14#15



LEGEND

- Found iron pipe monuments tagged "LS.3202" per P/M 7-14#15
- Set 1" iron pipes tagged "LS.3202" for all angle and curve points, except as noted.
- ┆ Set 1/2" iron pipes tagged "LS.3202" for all lot corners.



VICINITY MAP Scale: 1" = 1 Mile

NOTE No. 1
All future residences constructed upon lots shown hereon may be required to incorporate modern sound insulation techniques in order to attenuate noise density generated by adjoining rail traffic to 45 dba interior noise level.

NOTE No. 2
Any filling of the Borrow Pit Site, as determined necessary by the builder, will require a grading permit from the Plumas County Building Dept., in compliance with the provisions of Chapter 70, Uniform Building Code.

Subdivision Acreage:
Total - 8.64 Acres
Lots - 7.02 Acres
Roads - 1.62 Acres

LYDDON GLEN FOREST ESTATES
IN A PORTION OF SECTION 7, T. 28 N., R. 7 E., M.D.B. & M.
PLUMAS COUNTY, CALIFORNIA
SCALE: 1" = 50'