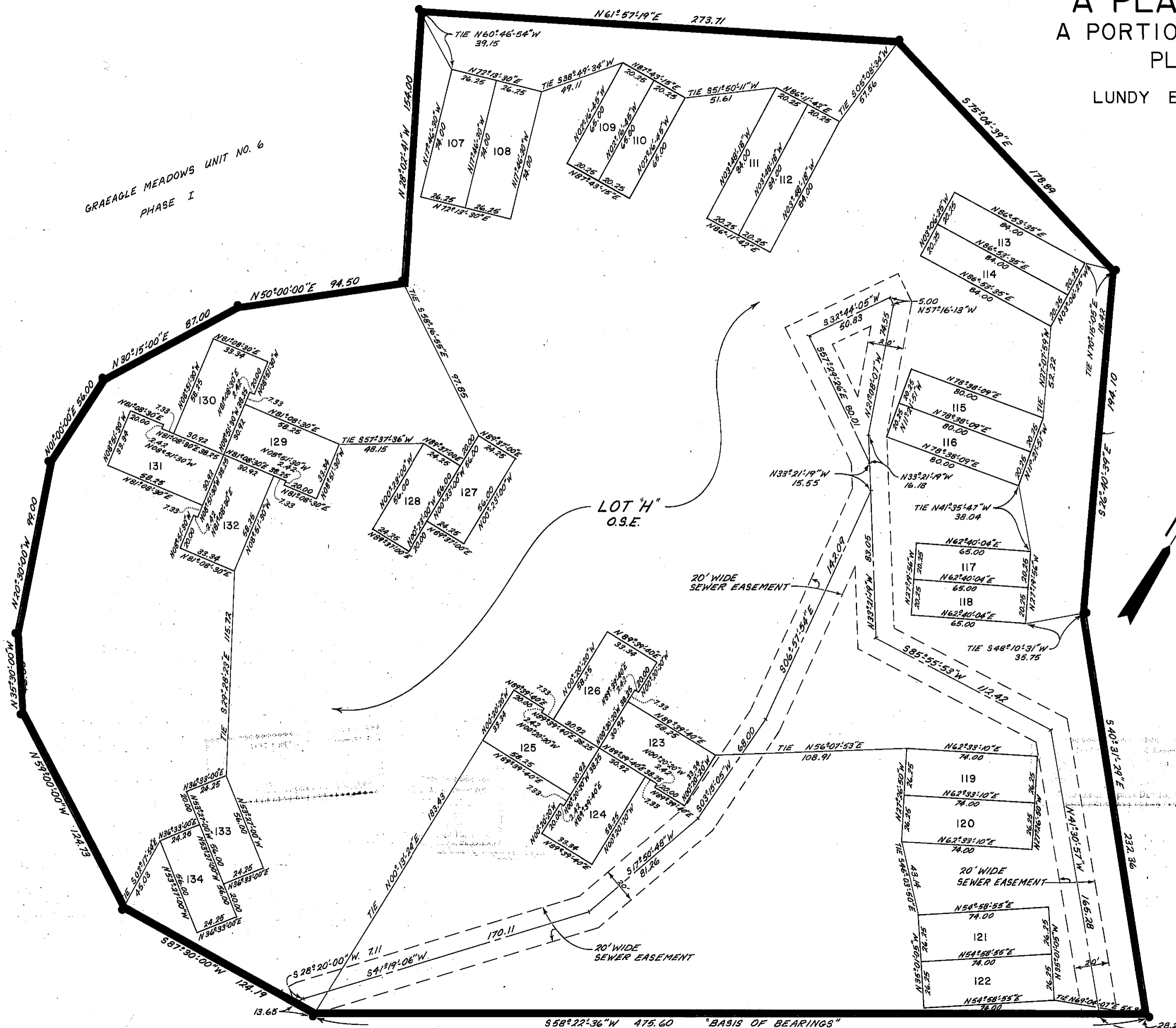
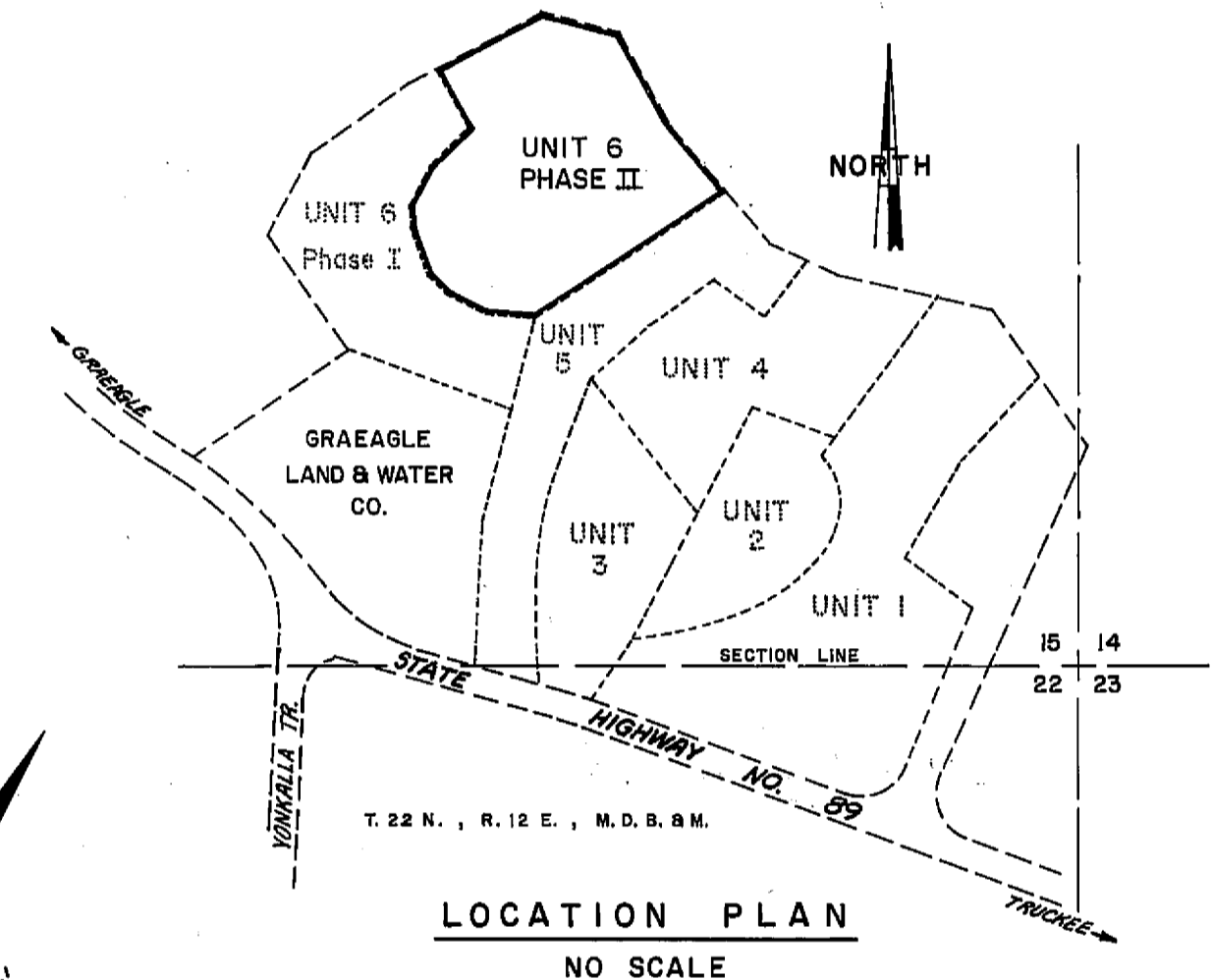


PHASE II GRAEAGLE MEADOWS UNIT NO. 6

A PLANNED UNIT DEVELOPMENT
A PORTION OF SECTION 15, T.22N., R.12E., M.D.B. & M.
PLUMAS COUNTY, CALIFORNIA

LUNDY ENGINEERING INC. - GRAEAGLE, CALIFORNIA
NOVEMBER, 1980

GRAEAGLE MEADOWS UNIT NO. 6
PHASE I



AREA TABULATION	SQUARE FEET
LOTS 115 & 116	3240
LOTS 111 - 114	6804
LOTS 109, 110, 117 & 118	5265
LOTS 107, 108 & 119-122	11655
LOTS 127, 128, 133 & 134	5432
LOTS 123 - 126 & 129-132	14795.92
LOT "H"	24190.34
TOTAL BOUNDARY	289093.26 (6.637 ACRES)

- LEGEND**
- - FOUND 1/2" REBAR W/PLASTIC CAP STAMPED R.C.E. 15265
 - O.S.E. - OPEN SPACE EASEMENT

"BASIS OF BEARINGS"
THE BASIS OF BEARINGS FOR THIS MAP IS THE MOST NORTHWESTERLY BOUNDARY LINE OF GRAEAGLE MEADOWS UNIT NO. 5, GIVEN AS S58°22'36"W, AS SHOWN IN BOOK 4 OF MAPS AT PAGE 133, PLUMAS COUNTY RECORDS.