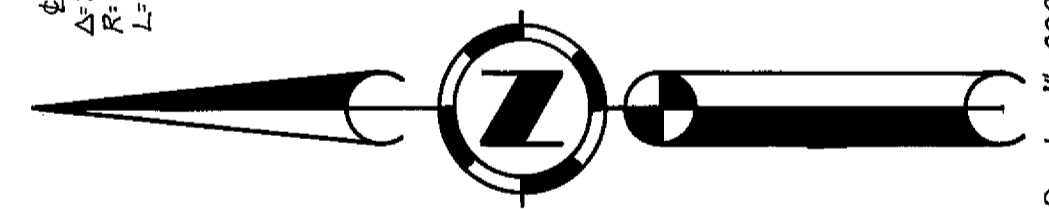


34	69° 56' 19"	365.71	25
R	470.00	530.00	
L	573.71	340.94	
35	33° 04' 54"	6° 11' 56"	37
R	530.00	350.00	
L	306.01	37.87	
36	30° 34' 37"	46° 37' 25"	38
R	350.00	290.00	
L	186.78	235.98	
37	53° 37' 01"	59° 37' 01"	41
R	235.00	295.00	
L	219.91	276.06	
38	26° 07' 54"	26° 07' 54"	43
R	365.00	305.00	
L	166.47	139.11	
39	21° 47' 22"	21° 47' 22"	54
R	500.00	580.00	
L	197.75	220.57	
40	52° 06' 51"	26° 06' 58"	56
R	330.00	390.00	
L	300.16	172.77	
41	23° 59' 53"		58
R	390.00		
L	176.96	45.32	

CURVE DATA FOR WENDRILL ROAD SEE SHEET 3



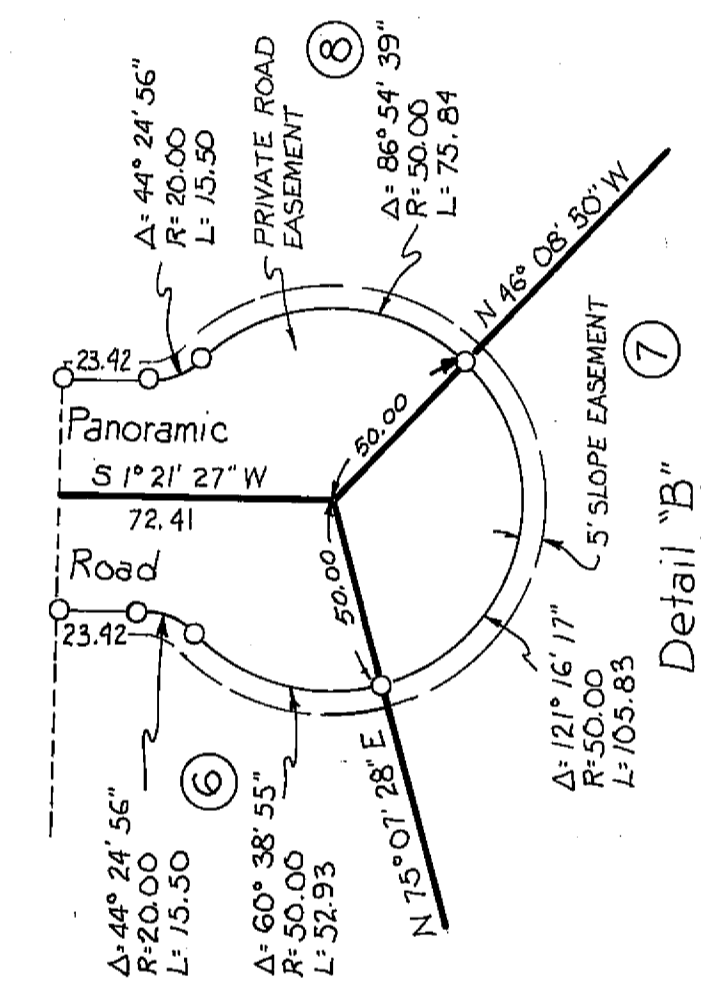
River Valley Subdivision

A Planned Unit Development for
Ramelli Investment Group

BEING A PORTION OF SECTIONS 15, 22, 27 & 28
 T. 23 N., R. 14 E., M.D.B. & M.
 PLUMAS COUNTY, CALIFORNIA

HAMBY SURVEYING INC.
 P.O. BOX 842, PH.(916) 832 5571
 PORTOLA, CALIFORNIA, 96122

SHEET 4 OF 7



- Legend:
- : Set 1/2" rebar and cap, LS 2843
 - : Found point as noted
 - ⊙: Found State Highway Monument "T" bar, RECS569
 - ⊙: Found County Highway Monument "6"x6" conc. post with nail in center
 - (R): Record
 - (M): Measured
 - ⊙: Calculated point only