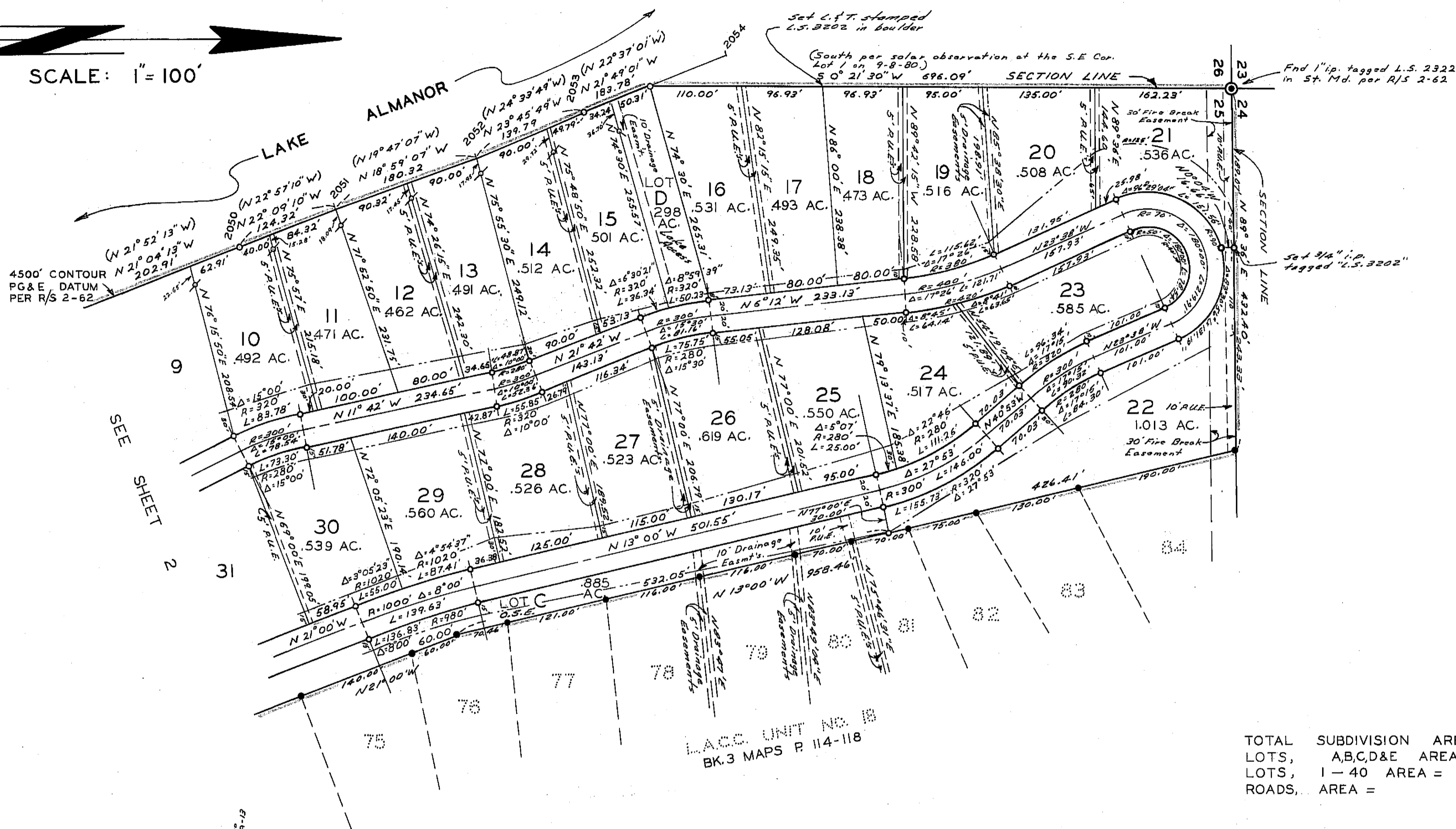
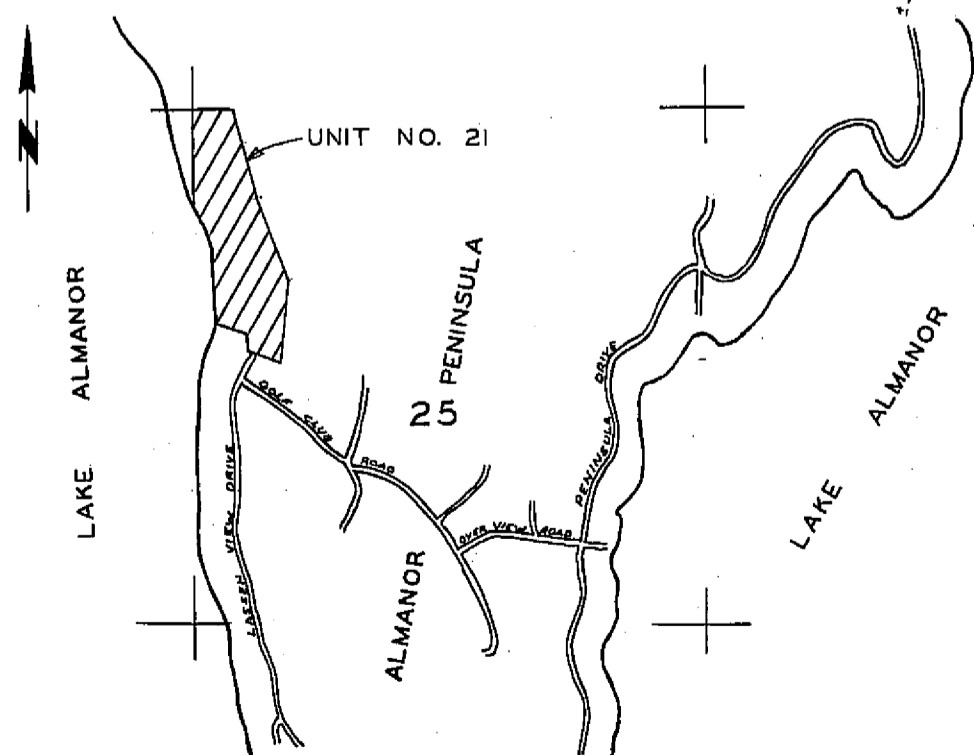


SCALE: 1" = 100'



VICINITY MAP SCALE: 1" = 2000'



LAKE ALMANOR COUNTRY CLUB UNIT NO. 21

IN A PORTION OF NW 1/4 SECTION 25, T.28N., R.7E., M.D.B. & M.
 PLUMAS COUNTY, CALIFORNIA
 OWNER & SUBDIVIDER
 BALDWIN CONTRACTING CO. INC.

PAUL E. SIMPSON & ASSOCIATES, ENGINEERING-PLANNING - SURVEYING
 SUSANVILLE, CALIFORNIA