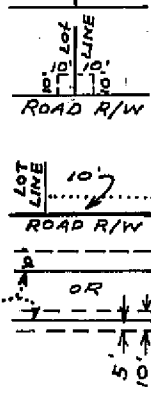
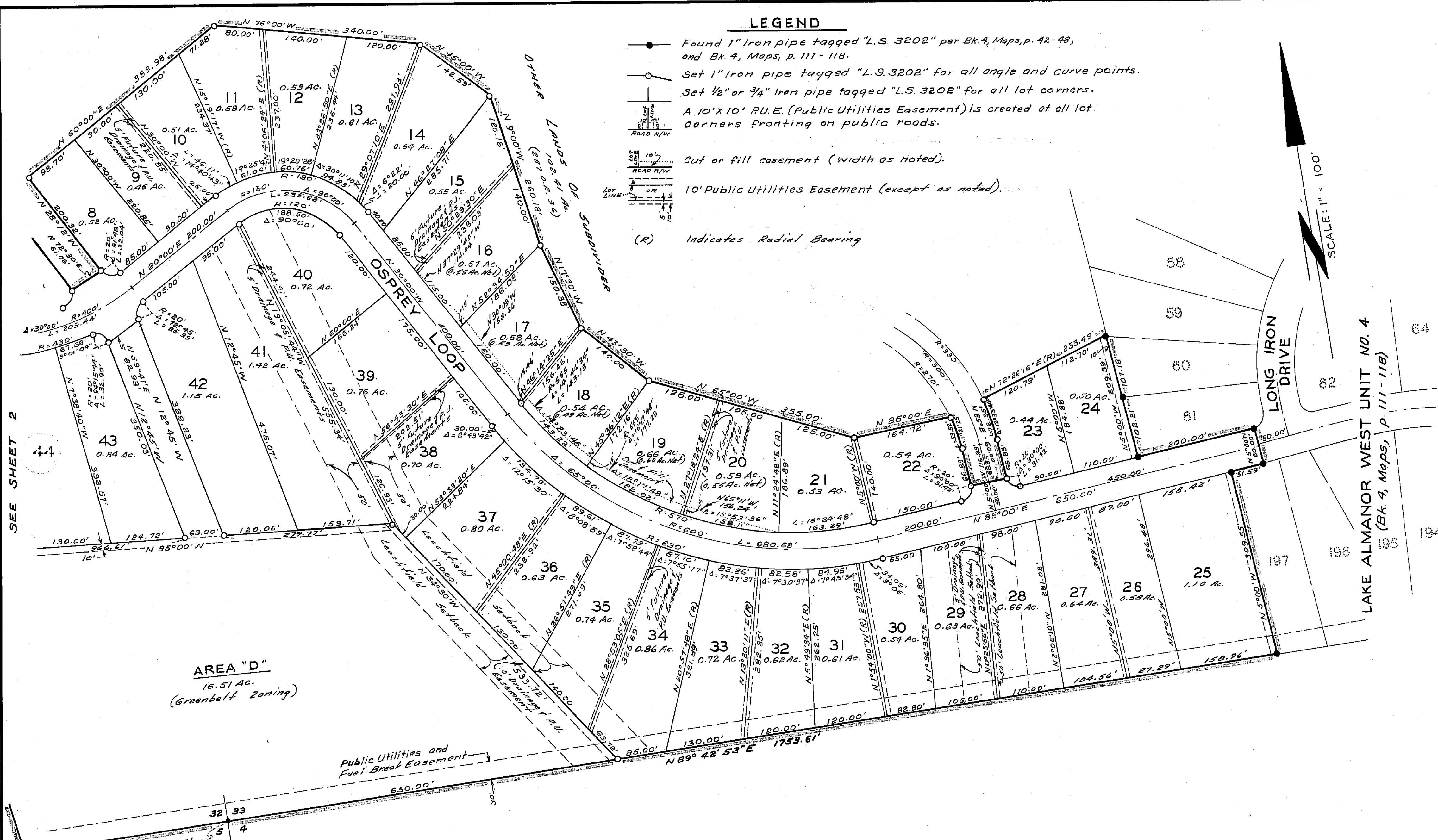


LEGEND

- Found 1" Iron pipe tagged "L.S. 3202" per Bk. 4, Maps, p. 42-48, and Bk. 4, Maps, p. 111-118.
- Set 1" Iron pipe tagged "L.S. 3202" for all angle and curve points.
- Set 1/2" or 3/4" Iron pipe tagged "L.S. 3202" for all lot corners.
- A 10' X 10' P.U.E. (Public Utilities Easement) is created at all lot corners fronting on public roads.
- Cut or fill easement (width as noted).
- 10' Public Utilities Easement (except as noted).
- (R) Indicates Radial Bearing



SCALE: 1" = 100'



AREA "D"
16.51 Ac.
(Greenbelt Zoning)

LAKE ALMANOR WEST UNIT NO. 5

IN A PORTION OF SECTIONS 32, 33, T.28 N., R. 7 E., M.D.B. & M.
PLUMAS COUNTY, CALIFORNIA

SCALE: 1" = 100'

End. 2 1/2" steel cap stamped
"C.A.F. 1957" per R15 3-85
& R15 4-5 for Sec. Cor.