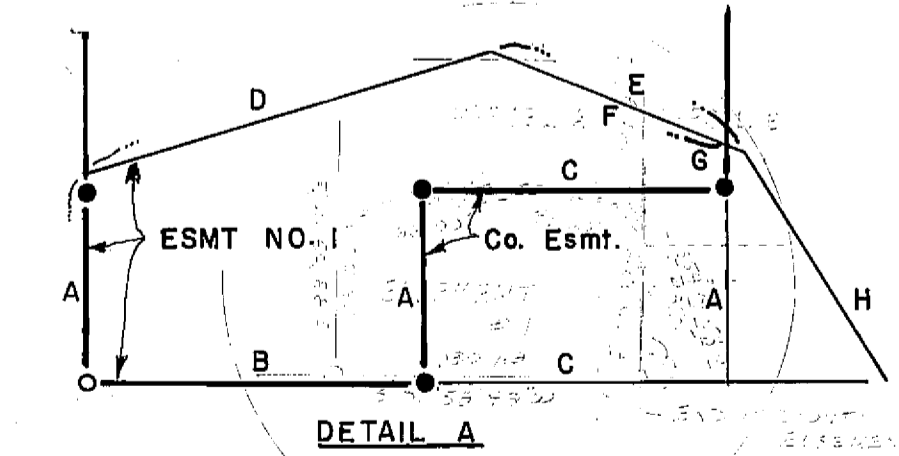


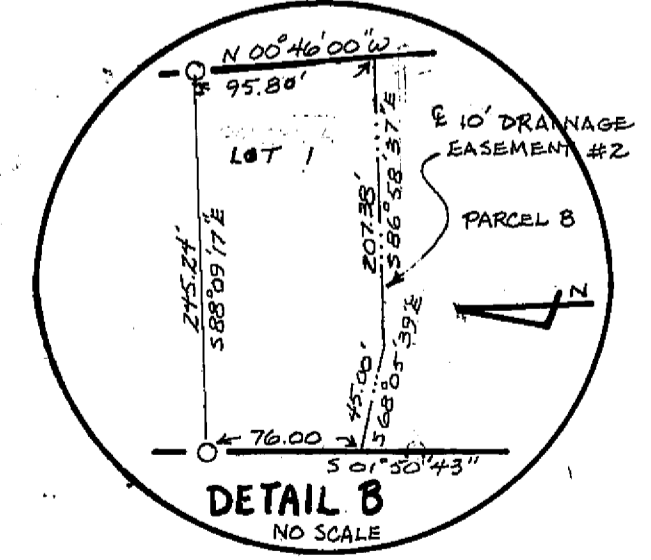
- Notes:**
1. A preliminary soils report was prepared in October 1980 by Clifford R. Brown R.C.E. 22836 and is on file with the County Engineer. No problems are anticipated with single story frame construction.
 2. Easement No. 1 is an existing private road, drainage and utility easement per 7 P.M. 18.
 3. Easement No. 2 is for drainage purposes and was required as a condition of approval of the parent parcel map and is dedicated to the public.
 4. Easement No. 3 is dedicated to the County for road, drainage and utility purposes.
 5. Easement No. 4 is dedicated to the County for drainage purposes. This is a 10' wide easement centered on the stream. Bearing & Distances shown are for mapping purposes. (376 OR 633)

6. Easement No. 5 is a 10' wide Public Utility Easement along the East line of the County Road Easement #3 as shown hereon.
7. Easement No. 6 is a 10' wide Public Utility Easement along the North and West Line of Lot 1; and the south line of Lot 6 (376 OR 632)



COURSE DATA

A	38.00'	S88°09'17"E
B	53.38'	S 1°50'43"W
C	47.38'	S 1°50'43"W
D	66.00'	S17°16'14"E
E	43.00'	S21°04'46"W
F	40.67'	S21°04'46"W
G	11.22'	S88°09'17"E
H	48.65'	S54°04'54"W



WOLF CREEK MEADOWS

S3 T26N R9E MDM Plumas Co, Calif.