

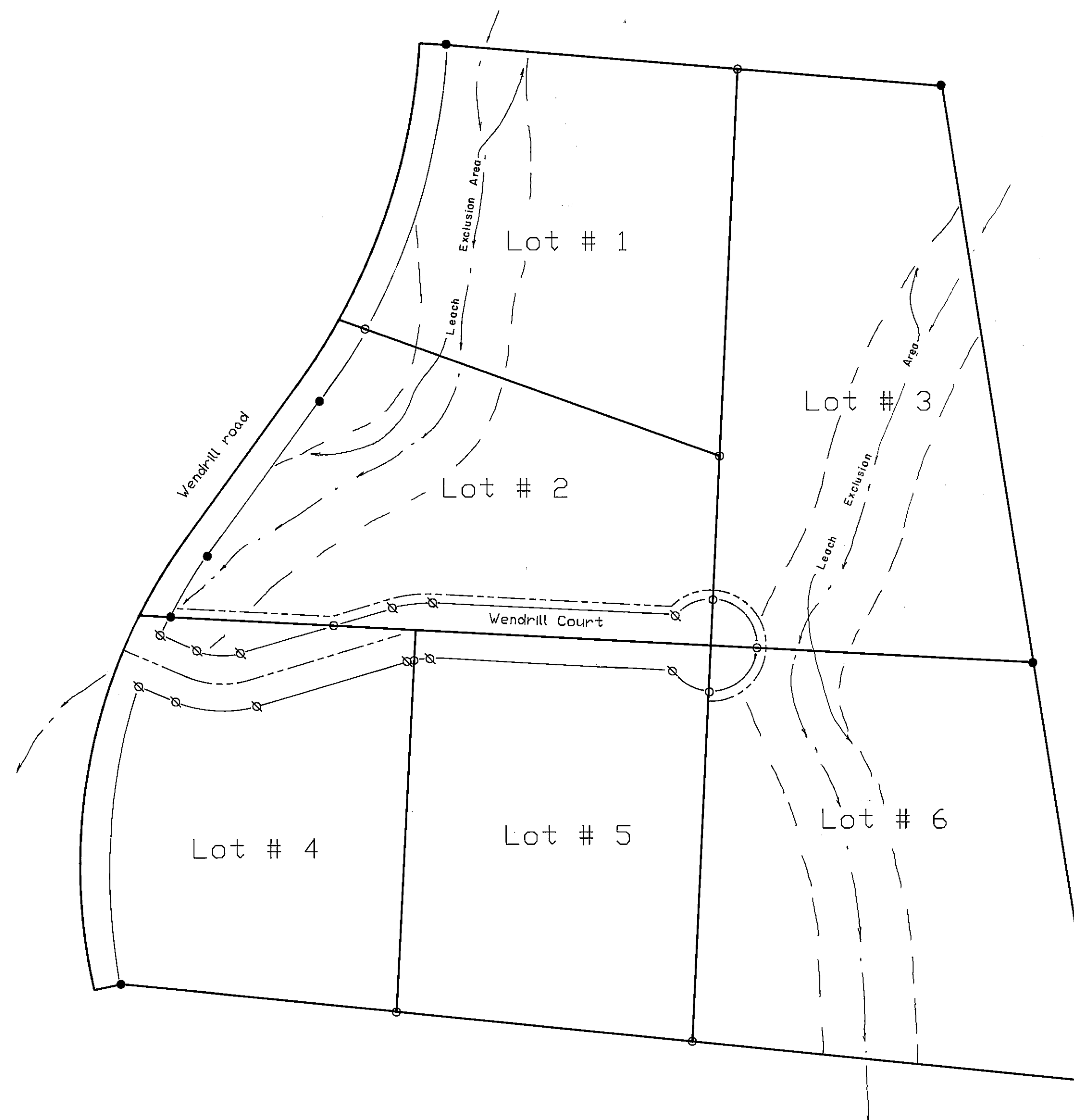
LEGEND

- FOUND Rebar & Cap LS 2843
- ⊗ SET 5/8" Rebar & Plastic Cap LS 2843
- SET 5/8" Rebar & Alum. Cap LS 2843
- (R) RECORD per 5 M 32



100 50 0 100 200 300

1" = 100'



NOTES

1. The information shown hereon is for informational purposes, describing conditions as of the date of filing, and is not intended to affect record title interest.
2. Roads shown hereon as "Wendrill Drive and Wendrill Court" are private easements not subject to improvement or maintenance by Plumas County. Such easements will not become effective unless and until reservations and grants are included in the respective deeds.
3. A soil Report entitled "Preliminary Soils and Geologic Investigation for the Ramelli Ranch Property, Plumas County California" prepared in January, 1979 by Todd Nelson, C.E.G. and Robert D. Howell, C.E. of J. H. Kleinfelder and Associates, Reno, Nevada, is on file in the Plumas County Engineers Office.
4. Leach Exclusion Areas are to include all slopes over 30%, areas within 50' of seasonal drainages, within 50' of property lines, and within 100' of springs, wells, and year-round streams, and within a distance of 4 times a cut bank height from the top of bank, in conjunction with the requirements of Plumas County Ordinance 76-162.

RIVER VALLEY SUBDIVISION

Unit #3

A Resubdivision of Lots 4 & 5

River Valley Subdivision — (5 M 32)

Portions of Sections 22 & 27

T. 23N., R.14 E., M.D.M.

PLUMAS COUNTY — CALIFORNIA

Hamby Surveying Inc.

P.O. BOX 1209 Ph. (916) 832-5571

Portola, CA. 96122

88062

Sheet 3 of 3