

CURVE DATA

CURVE	DELTA	RADIUS	TANGENT	LENGTH	CHORD	CHORD BEARING
(A)	15°43'18"	70.00'	9.66'	19.21'	19.15'	S82°00'21"W
(B)	15°43'18"	100.00'	13.81'	27.44'	27.55'	S82°00'21"W
(C)	15°43'18"	150.00'	17.95'	35.67'	35.56'	S82°00'21"W
(D)	34°06'36"	151.87'	46.59'	90.41'	89.08'	
(E)	34°06'36"	181.87'	55.79'	108.27'	106.68'	
(F)	34°06'36"	211.87'	65.00'	126.13'	124.28'	
(G)	56°11'55"	122.04'	86.52'	158.94'	152.64'	
(H)	56°11'55"	192.04'	102.54'	188.36'	180.90'	
(I)	56°11'55"	222.04'	118.55'	217.79'	209.16'	
(J)	68°52'49"	70.00'	48.00'	84.15'	79.18'	
(K)	68°52'49"	100.00'	68.57'	120.22'	113.11'	
(L)	68°52'49"	130.00'	89.15'	156.28'	147.04'	
(M)	90°00'00"	20.00'	20.00'	31.42'	28.28'	

LEGEND

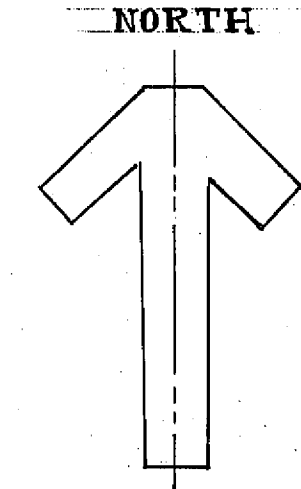
● Found point per maps GRS 19, 5 RS 115 as noted.
 ▲ Found untagged 1/2 or 3/4 i.p. per Maps 2/48, tagged them RCE 22148.
 ○ Set 3/4 i.p. tagged RCE 22148.

NOTE
 RIM DRIVE is a 60' private road easement and a 60' public utility easement.

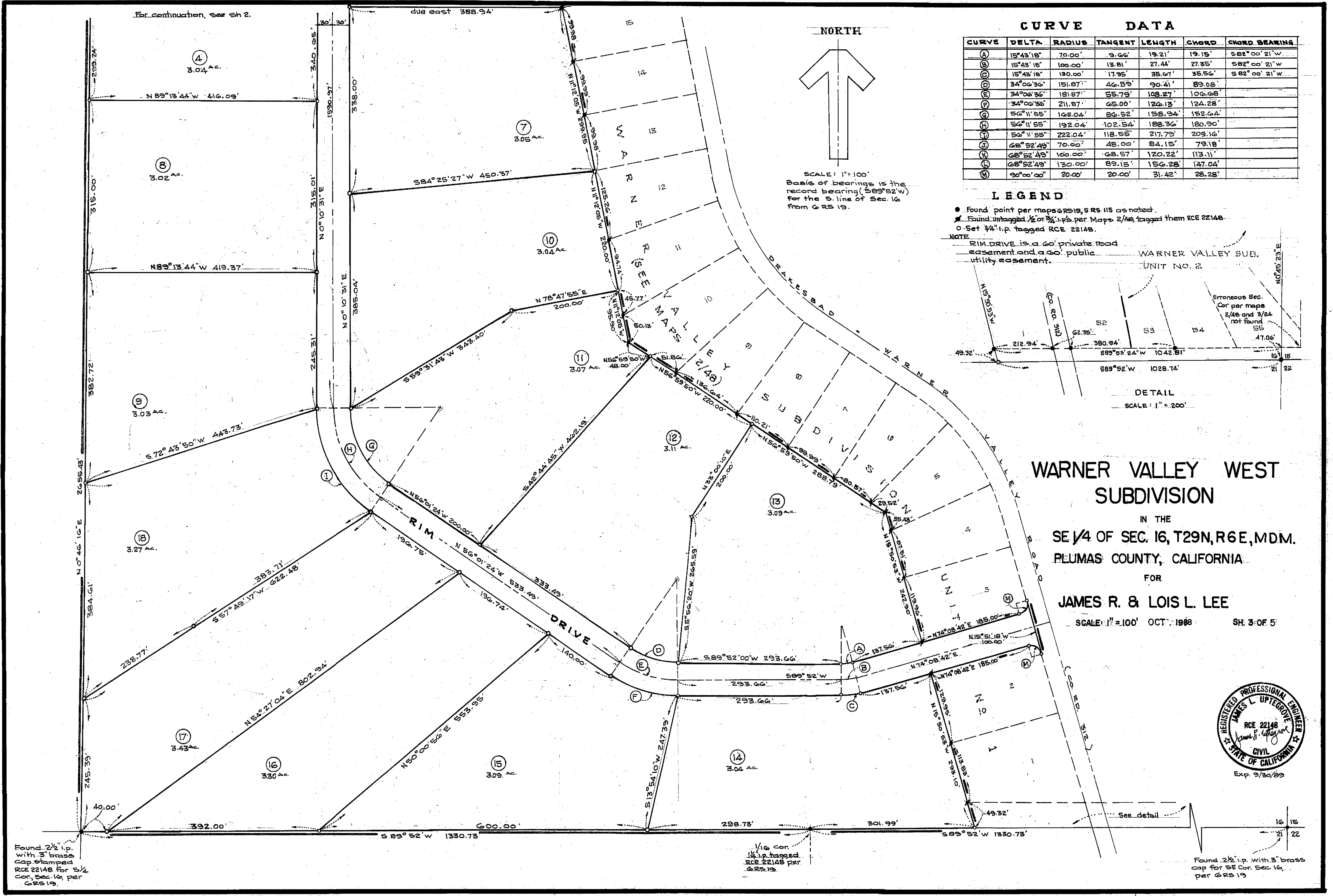
WARNER VALLEY SUB.
UNIT NO. 2

Erroneous Sec. Cor per maps 2/48 and 3/24 not found

DETAIL
SCALE: 1" = 200'



SCALE: 1" = 100'
 Basis of bearings is the record bearing (S89°52'W) for the S. line of Sec. 16 from GRS 19.

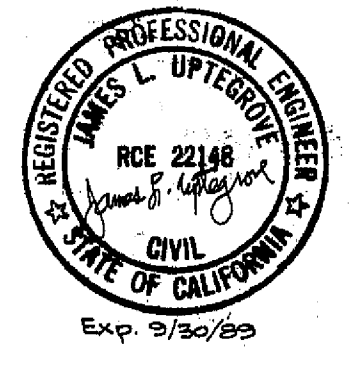


**WARNER VALLEY WEST
SUBDIVISION**

IN THE
SE 1/4 OF SEC. 16, T29N, R6E, MDM.
PLUMAS COUNTY, CALIFORNIA

FOR
JAMES R. & LOIS L. LEE

SCALE: 1" = 100' OCT. 1988 SH. 3 OF 5



Found 2 1/2 i.p. with 3" brass cap stamped RCE 22148 for 3/4 cor. Sec. 16, per GRS 19.

1/16 cor. 1/4 i.p. tagged. RCE 22148 per GRS 19.

Found 2 1/2 i.p. with 3" brass cap for SE Cor. Sec. 16, per GRS 19.