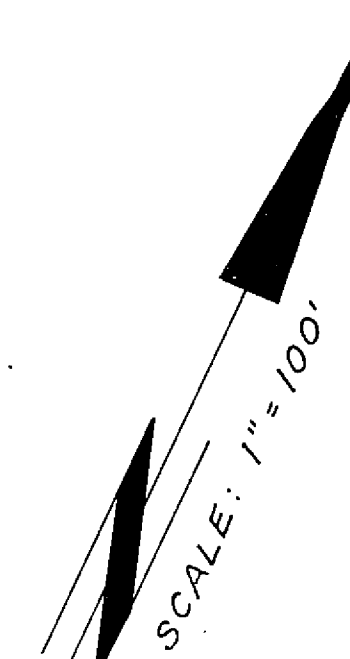


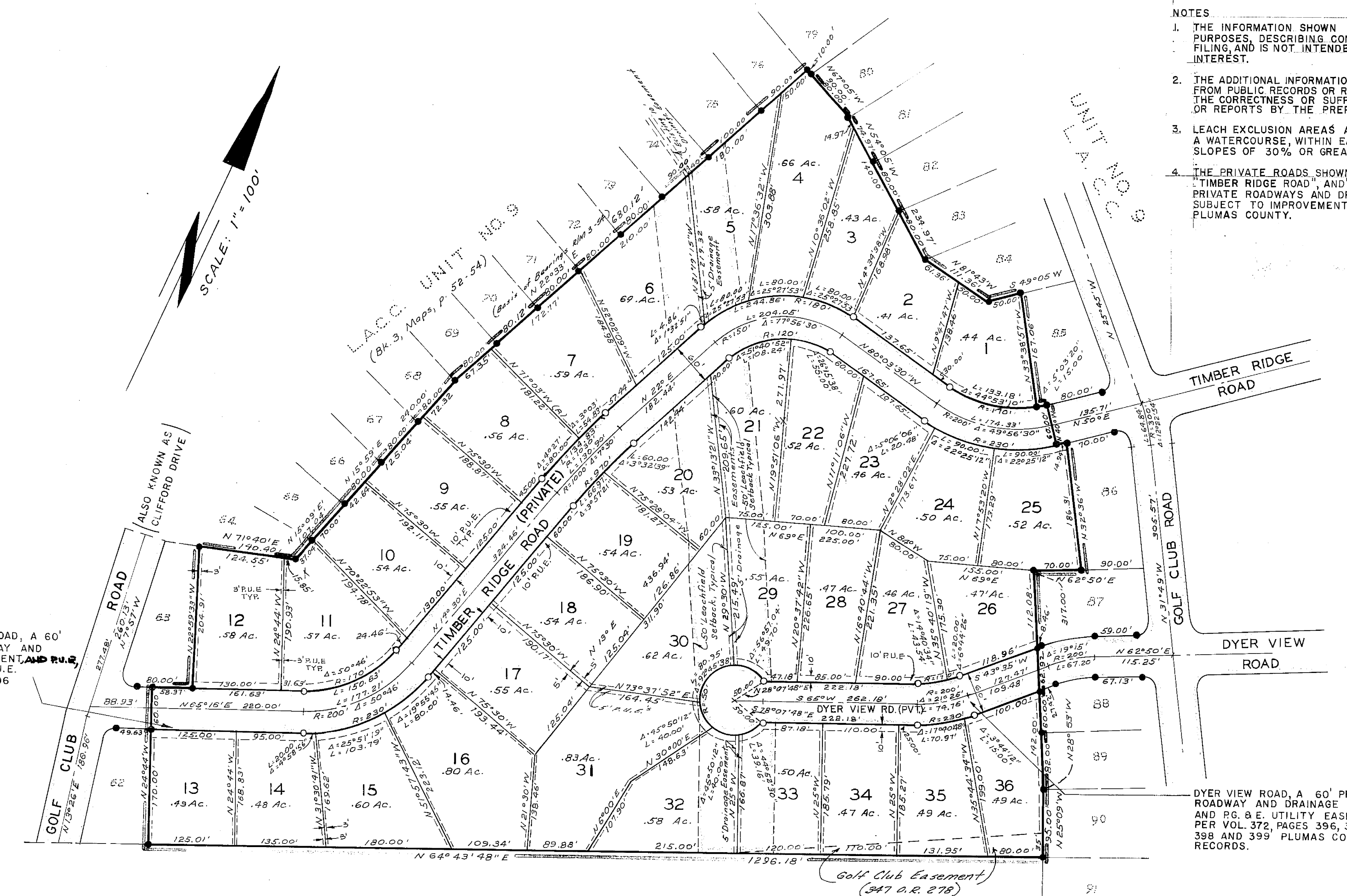
NOTES

1. THE INFORMATION SHOWN HEREON IS FOR INFORMATIONAL PURPOSES, DESCRIBING CONDITIONS AS OF THE DATE OF FILING, AND IS NOT INTENDED TO AFFECT RECORD TITLE INTEREST.
2. THE ADDITIONAL INFORMATION SHOWN HEREON IS DERIVED FROM PUBLIC RECORDS OR REPORTS, AND DOES NOT IMPLY THE CORRECTNESS OR SUFFICIENCY OF THOSE RECORDS OR REPORTS BY THE PREPARER.
3. LEACH EXCLUSION AREAS ARE ALL AREAS WITHIN 50' OF A WATERCOURSE, WITHIN EASEMENTS, AND FOR ALL SLOPES OF 30% OR GREATER.
4. THE PRIVATE ROADS SHOWN HEREON "GOLF CLUB ROAD", "TIMBER RIDGE ROAD", AND "DYER VIEW ROAD" ARE PRIVATE ROADWAYS AND DRAINAGE EASEMENTS NOT SUBJECT TO IMPROVEMENT OR MAINTENANCE BY PLUMAS COUNTY.



TIMBER RIDGE ROAD, A 60' PRIVATE ROADWAY AND DRAINAGE EASEMENT, AND P.U.E. AND P.G. & E. U.E. PER 372 O.R. 396

DYER VIEW ROAD, A 60' PRIVATE ROADWAY AND DRAINAGE EASEMENT, AND P.U.E. AND P.G. & E. UTILITY EASEMENT PER VOL. 372, PAGES 396, 397, 398 AND 399 PLUMAS CO. OFFICIAL RECORDS.



L.A.C.C. GOLF COURSE

ADDITIONAL INFORMATION MAP

LAKE ALMANOR COUNTRY CLUB UNIT NO. 22

IN A PORTION OF SECTIONS 25, & 36, T.28N, R.7E., M.D.B. & M. PLUMAS COUNTY CALIFORNIA

OWNER & SUBDIVIDER: JERRY D. LEAVY AND PEARL LEAVY

SCALE: 1" = 100'