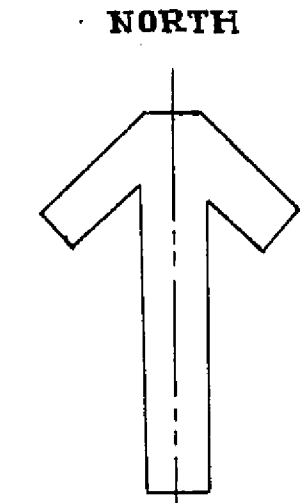
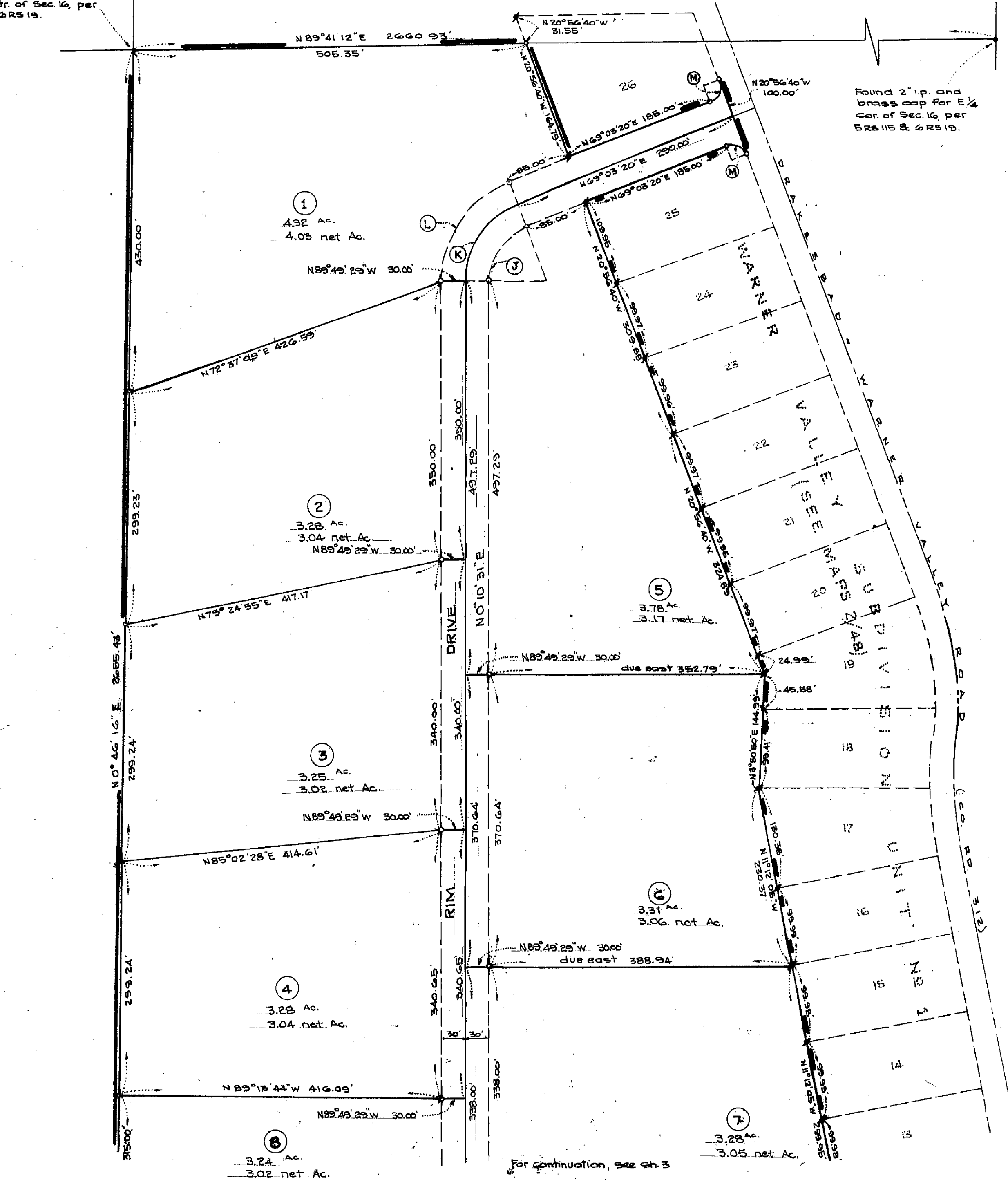
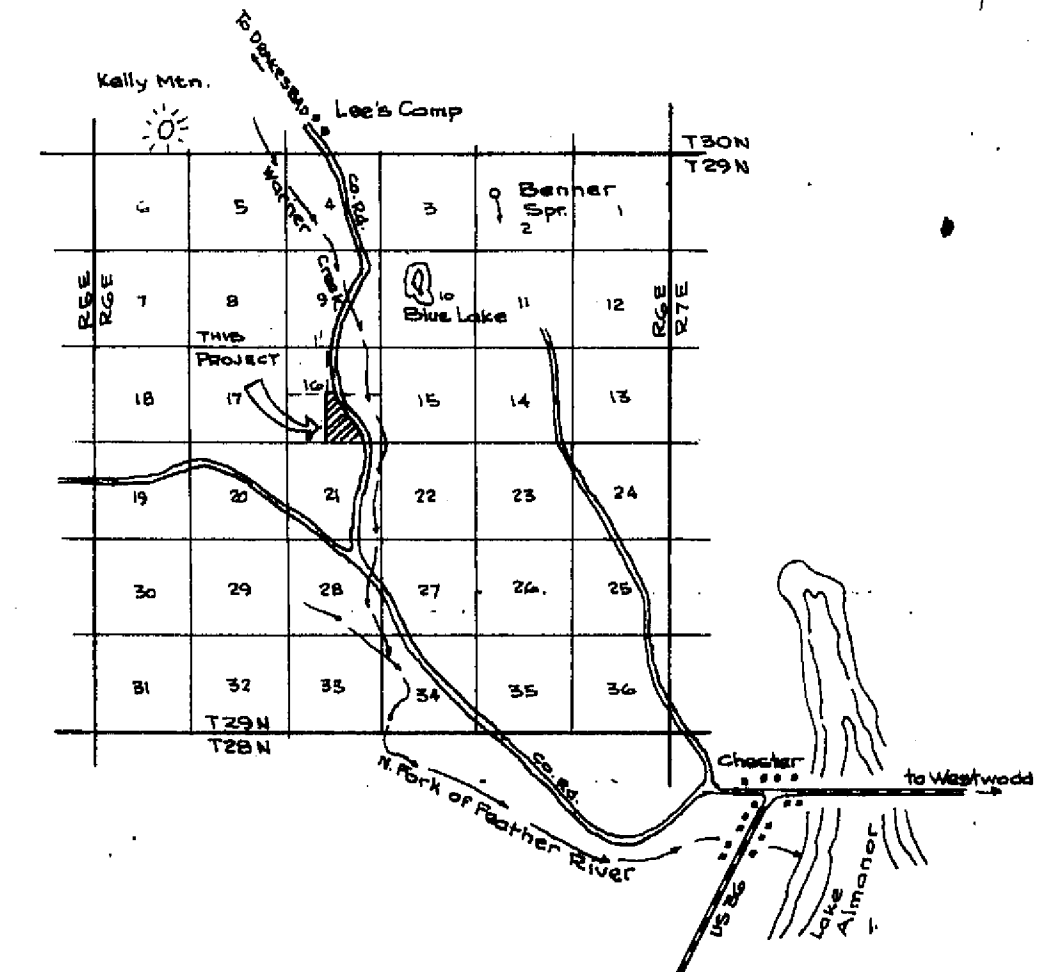


Found 1/4" i.p. in MOR tagged RCE 22148 for ctr. of Sec. 16, per GRS 19.

Found 2" i.p. and brass cap for E 1/4 cor. of Sec. 16, per SRS 115 & GRS 19.



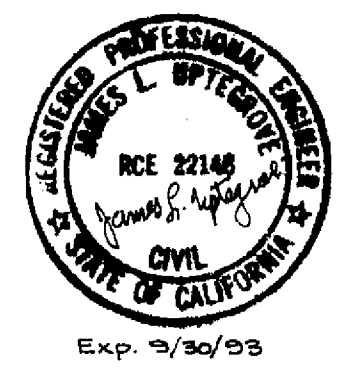
SCALE: 1"=100'
Basis of bearings is the record bearing (S89°52'W) for the S. line of Sec. 16 from GRS 19.



VICINITY MAP
SCALE: 1"=2 MI

LEGEND

- Found point per Maps GRS 19, SRS 115 as noted
 - Found untagged 1/4" or 3/4" i.p. per Maps 2/48, tagged then RCE 22148
 - Set 3/4" i.p. tagged RCE 22148
- NOTE:
RIM DRIVE is a 60' private road easement and a 60' public utility easement.



AMENDED MAP
OF
WARNER VALLEY WEST
SUBDIVISION
IN THE
SE 1/4 OF SEC. 16, T29N, R6E, MDM.
PLUMAS COUNTY, CALIFORNIA
FOR
JAMES R. & LOIS L. LEE
SCALE: 1"=100' OCT. 1989 SH. 2 OF 5