

SCALE: 1" = 100'

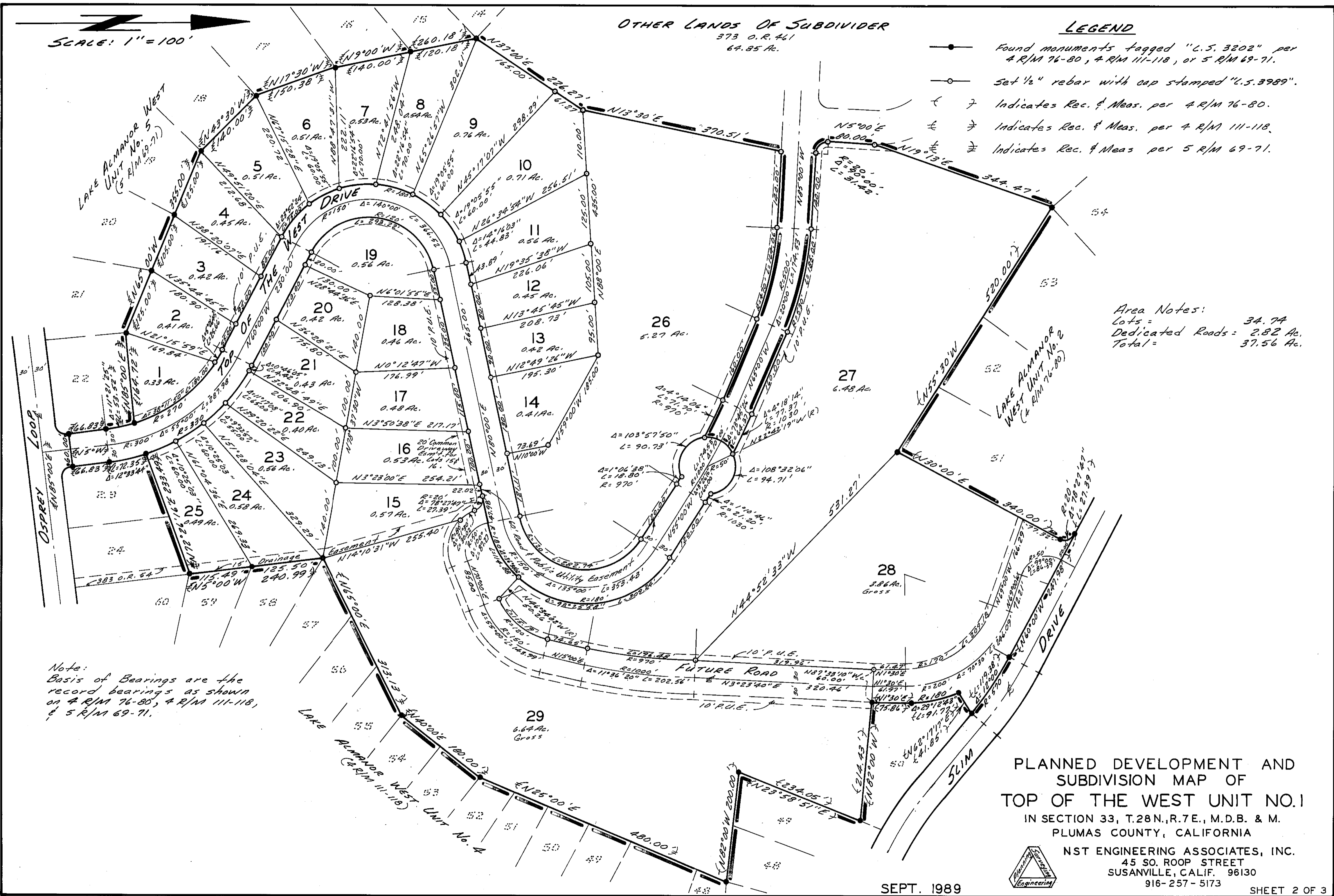
OTHER LANDS OF SUBDIVIDER

373 O.R. 461
64.85 Ac.

LEGEND

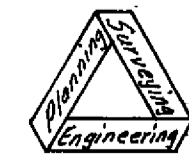
- Found monuments tagged "C.S. 3202" per 4 R/M 76-80, 4 R/M 111-118, or 5 R/M 69-71.
- Set 1/2" rebar with cap stamped "C.S. 3989".
- ⊂ ⊃ Indicates Rec. & Meas. per 4 R/M 76-80.
- ⊔ ⊕ Indicates Rec. & Meas. per 4 R/M 111-118.
- ⊖ ⊗ Indicates Rec. & Meas. per 5 R/M 69-71.

Area Notes:
 Lots = 34.74
 Dedicated Roads = 2.82 Ac.
 Total = 37.56 Ac.



Note:
 Basis of Bearings are the
 record bearings as shown
 on 4 R/M 76-80, 4 R/M 111-118,
 & 5 R/M 69-71.

PLANNED DEVELOPMENT AND
 SUBDIVISION MAP OF
 TOP OF THE WEST UNIT NO. 1
 IN SECTION 33, T.28N., R.7E., M.D.B. & M.
 PLUMAS COUNTY, CALIFORNIA



NST ENGINEERING ASSOCIATES, INC.
 45 SO. ROOP STREET
 SUSANVILLE, CALIF. 96130
 916-257-5173

SEPT. 1989

SHEET 2 OF 3