

OWNER'S STATEMENT

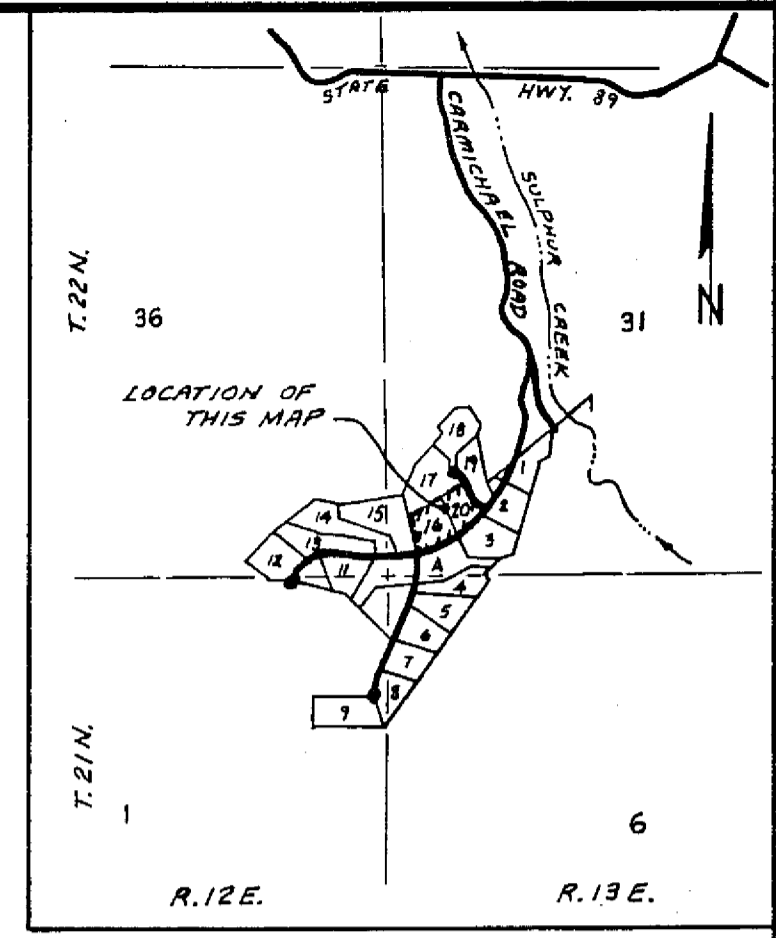
MOHAWK MEADOWS, A CALIFORNIA GENERAL PARTNERSHIP, HAVING RECORD TITLE INTEREST IN THE HERON SUBDIVIDED LANDS DOES HEREBY CONSENT TO THE PREPARATION AND RECORDDATION OF THIS MAP.

MOHAWK MEADOWS, A CALIFORNIA GENERAL PARTNERSHIP

BY: MOHAWK VALLEY PROPERTIES, INC., A CALIFORNIA CORPORATION
 BY: THE HUGHES MOUNTAIN INVESTMENTS, A CALIFORNIA LIMITED PARTNERSHIP

BY: Donald F. Williams
 DONALD F. WILLIAMS, PRESIDENT

BY: Robert D. Hughes
 ROBERT D. HUGHES, VICE-PRESIDENT



LOCATION MAP
NOT TO SCALE

AREA TABULATION

LOTS 1 and 2	6.84 AC.
PRIVATE ROAD EASEMENT	0.63 AC.
TOTAL	7.47 AC.

STATE OF CALIFORNIA } SS
 COUNTY OF PLUMAS

ON 1-30-95, 1995, BEFORE ME, HELEN M. STRAIN, PERSONALLY APPEARED DONALD F. WILLIAMS AND ROBERT D. HUGHES PERSONALLY KNOWN TO ME (OR PROVED TO ME ON THE BASIS OF SATISFACTORY EVIDENCE) TO BE THE PERSONS WHOSE NAMES ARE SUBSCRIBED TO THE WITHIN INSTRUMENT AND ACKNOWLEDGED TO ME THAT THEY EXECUTED THE SAME IN THEIR AUTHORIZED CAPACITY, AND THAT BY THEIR SIGNATURES ON THE INSTRUMENT THE PERSON, OR THE ENTITY UPON BEHALF OF WHICH THE PERSONS ACTED, EXECUTED THE INSTRUMENT.

WITNESS MY HAND AND OFFICIAL SEAL. Helen M. Strain
Helen M. Strain PLUMAS COUNTY, CA
 Notary Commission Expires 4-24-95

COUNTY RECORDER'S CERTIFICATE

FILED THIS 16TH DAY OF FEBRUARY, 1995, AT 1:30 P.M. IN BOOK 7 OF MAPS, AT PAGE 135-136, AT THE REQUEST OF THE COUNTY SURVEYOR.

JUDITH WELLS
COUNTY RECORDER

BY: Judith Wells
DEPUTY

FEE: \$ 10.00
 FILE NO.: 953

- LEGEND**
- - FOUND 1/2" REBAR WITH ALUMINUM CAP STAMPED RCE 13225 PER 7 M 80.
 - - SET 1/2" REBAR WITH ALUMINUM CAP STAMPED RCE 13225.
 - - COMPUTED LOCATION, NOTHING FOUND OR SET.
 - () - INDICATES MEASURED DATA AND RECORD DATA PER 7 M 80.

BASIS OF BEARINGS
 THE BASIS OF BEARINGS FOR THIS MAP IS THE NORTH LINE OF LOT 16 GIVEN AS NORTH 63°52'33" EAST IN BOOK 8 OF MAPS AT PAGE 80, PLUMAS COUNTY RECORDS.

ENGINEER'S STATEMENT

THIS MAP AND THE SURVEY PERFORMED THEREFORE IN NOVEMBER 1994, WERE MADE BY ME OR UNDER MY DIRECTION. THE SURVEY IS TRUE AND COMPLETE AS SHOWN. ALL OF THE MONUMENTS SHOWN HEREON ARE OF THE CHARACTER AND OCCUPY THE POSITIONS INDICATED AND ARE SUFFICIENT TO ENABLE THE SURVEY TO BE RETRACED.

DATED: 1/27/95
Larry K. Fites
 LARRY K. FITES, R.C.E. 13225
 LICENSE EXP. DATE 3-31-97

COUNTY SURVEYOR'S STATEMENT

I HAVE EXAMINED THIS MAP AND FIND IT IS SUBSTANTIALLY THE SAME AS IT APPEARED ON THE TENTATIVE MAP AND ANY APPROVED ALTERATIONS THEREOF. ALL PROVISIONS OF THE SUBDIVISION MAP ACT AND ANY LOCAL ORDINANCES APPLICABLE AT THE TIME OF APPROVAL OF THE TENTATIVE MAP HAVE BEEN COMPLIED WITH AND I AM SATISFIED THAT THE MAP IS TECHNICALLY CORRECT.

DATED: 2-14-95
R. Tom Hunter
 R. TOM HUNTER, R.C.E. 30515
 PLUMAS COUNTY SURVEYOR
 LICENSE EXP. DATE 3-31-96

COUNTY TAX COLLECTOR'S CERTIFICATE

I, BARBARA J. COATES, TAX COLLECTOR OF THE COUNTY OF PLUMAS, STATE OF CALIFORNIA, DO HEREBY CERTIFY THAT THERE ARE NO TAX LIENS AGAINST THE LOTS, AS SHOWN HEREON, FOR UNPAID STATE, COUNTY, MUNICIPAL, OR LOCAL TAXES OR SPECIAL ASSESSMENTS COLLECTED AS TAXES, EXCEPT TAXES OR ASSESSMENTS NOT YET PAYABLE. TAXES OR ASSESSMENTS WHICH ARE A LIEN BUT NOT YET PAYABLE, ARE ESTIMATED TO BE IN THE AMOUNT OF \$ none.

DATED: 2-14-95
Barbara J. Coates
Barbara J. Coates, asst.
 BARBARA J. COATES
 PLUMAS COUNTY TAX COLLECTOR

COUNTY CLERK'S CERTIFICATE

I, JUDITH WELLS, CLERK OF THE COUNTY OF PLUMAS, STATE OF CALIFORNIA AND EX-OFFICIO CLERK OF THE BOARD OF SUPERVISORS OF SAID COUNTY, HEREBY CERTIFY THAT THE HEREIN EMBODIED MAP WAS APPROVED BY SAID BOARD OF SUPERVISORS CONVENED IN A REGULAR MEETING UPON THE 17th DAY OF FEBRUARY, 1995.

DATED: 2-16-95
Judith Wells
 JUDITH WELLS
 COUNTY CLERK

**MOHAWK VALLEY PROPERTIES
 UNIT NO. 1, LOT 16
 RESUBDIVISION**

A PLANNED DEVELOPMENT
 FOR
MOHAWK MEADOWS
 A CALIFORNIA GENERAL PARTNERSHIP

A PORTION OF
 SECTION 31, T. 22 N., R. 13 E., M.D.M.
 PLUMAS COUNTY, CALIFORNIA

PREPARED BY:
LARRY FITES ENGINEERING
 P.O. BOX 20308
 GRAEAGLE, CALIFORNIA 96103
 R.C.E. 13225