

CURVE TABLE

CURVE	RADIUS	LENGTH	DELTA
A	(280.00')	39.08'	07°59'47"
A-1	(280.00')	57.86'	11°50'24"
(A-2)	310.00'	107.32'	19°50'10"
(A-3)	280.00'	96.84'	19°50'10"
A-4	(280.00')	17.04'	03°29'09"
(B)	845.00'	103.22'	06°59'57"
(B-1)	815.00'	99.56'	06°59'57"
B-2	(845.00')	14.29'	00°58'08"
C	(270.00')	19.35'	04°06'19"
D	(270.00')	38.99'	08°16'24"
E	30.00'	41.33'	78°56'25"
F	30.00'	41.85'	79°55'51"
F-1	30.00'	15.44'	29°29'24"
G	500.00'	64.37'	07°22'35"
G-1	525.00'	67.59'	07°22'35"
G-2	475.00'	61.15'	07°22'35"
H	500.00'	104.26'	11°56'52"
H-1	475.00'	99.05'	11°56'52"
H-2	525.00'	67.31'	07°20'46"
H-3	525.00'	42.16'	04°36'06"
J	175.00'	82.99'	27°10'14"
J-1	200.00'	11.88'	03°24'15"
J-2	200.00'	82.96'	23°45'59"
J-3	150.00'	71.13'	27°10'14"
K	95.00'	171.08'	103°10'52"
K-1	70.00'	126.06'	103°10'52"
K-2	95.00'	21.36'	12°52'53"
K-3	95.00'	118.72'	71°36'10"
K-4	95.00'	31.00'	18°41'49"
K-5	120.00'	15.26'	07°17'14"
M	30.00'	20.64'	39°24'43"
N	50.00'	122.56'	140°26'32"
N-1	75.00'	50.35'	38°27'54"
N-2	75.00'	73.96'	56°29'51"
N-3	75.00'	30.41'	23°13'42"
N-4	75.00'	154.71'	118°11'26"
P	50.00'	61.00'	69°53'52"
P-1	75.00'	53.12'	40°34'57"
P-2	75.00'	13.70'	10°27'50"
P-3	75.00'	66.82'	51°02'47"
Q	30.00'	17.77'	33°55'52"
R	275.00'	75.48'	15°43'37"
S	265.00'	38.47'	08°19'02"
(T)	240.00'	175.49'	41°53'38"
(T-1)	270.00'	197.42'	41°53'38"
T-2	(270.00')	49.57'	10°31'07"
T-3	(270.00')	50.00'	10°36'36"
T-4	(240.00')	95.63'	22°49'47"
T-5	(240.00')	79.86'	19°03'51"
U	(270.00')	39.52'	08°23'11"
V	(270.00')	35.70'	07°34'32"
V-1	(270.00')	31.43'	06°40'13"

SEE SHEET 3 FOR ADDITIONAL CURVE LABELS

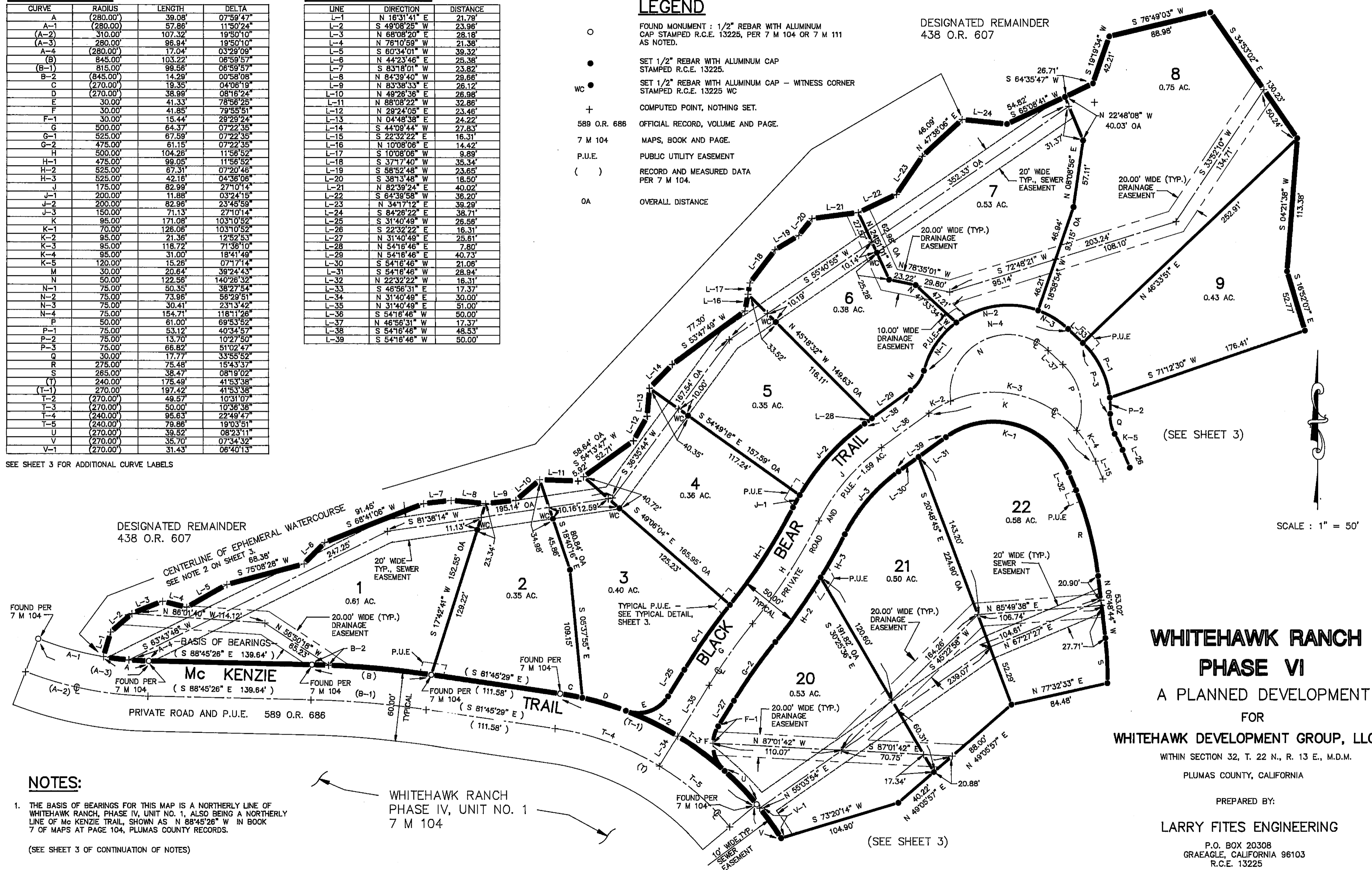
TANGENT TABLE

LINE	DIRECTION	DISTANCE
L-1	N 16°31'41" E	21.79'
L-2	S 49°08'25" W	23.96'
L-3	N 68°08'20" E	28.18'
L-4	N 76°10'59" W	21.38'
L-5	S 60°34'01" W	39.32'
L-6	N 44°23'46" E	25.38'
L-7	S 83°18'01" W	23.82'
L-8	N 84°39'40" W	28.66'
L-9	N 83°38'33" E	26.12'
L-10	N 49°26'36" E	26.98'
L-11	N 88°08'22" W	32.86'
L-12	N 28°24'05" E	23.46'
L-13	N 04°48'38" E	24.22'
L-14	S 44°09'44" W	27.83'
L-15	S 22°32'22" E	16.31'
L-16	N 10°08'06" E	14.42'
L-17	S 10°08'06" W	9.89'
L-18	S 37°17'40" W	35.34'
L-19	S 58°52'48" W	23.65'
L-20	S 38°13'48" W	18.50'
L-21	N 82°39'24" E	40.02'
L-22	S 64°39'58" W	36.20'
L-23	N 34°17'12" E	39.29'
L-24	S 84°28'22" E	38.71'
L-25	S 31°40'49" W	26.56'
L-26	S 22°32'22" E	16.31'
L-27	N 31°40'49" E	25.61'
L-28	N 54°16'46" E	7.80'
L-29	N 54°16'46" E	40.73'
L-30	S 54°16'46" W	21.09'
L-31	S 54°16'46" W	28.94'
L-32	N 22°32'22" W	16.31'
L-33	S 46°56'31" E	17.37'
L-34	N 31°40'49" E	30.00'
L-35	N 31°40'49" E	51.00'
L-36	S 54°16'46" W	50.00'
L-37	N 46°56'31" W	17.37'
L-38	S 54°16'46" W	48.53'
L-39	S 54°16'46" W	50.00'

LEGEND

- FOUND MONUMENT : 1/2" REBAR WITH ALUMINUM CAP STAMPED R.C.E. 13225, PER 7 M 104 OR 7 M 111 AS NOTED.
- SET 1/2" REBAR WITH ALUMINUM CAP STAMPED R.C.E. 13225.
- WC SET 1/2" REBAR WITH ALUMINUM CAP - WITNESS CORNER STAMPED R.C.E. 13225 WC
- + COMPUTED POINT, NOTHING SET.
- 589 O.R. 686 OFFICIAL RECORD, VOLUME AND PAGE.
- 7 M 104 MAPS, BOOK AND PAGE.
- P.U.E. PUBLIC UTILITY EASEMENT
- () RECORD AND MEASURED DATA PER 7 M 104.
- OA OVERALL DISTANCE

DESIGNATED REMAINDER
438 O.R. 607



NOTES:

1. THE BASIS OF BEARINGS FOR THIS MAP IS A NORTHERLY LINE OF WHITEHAWK RANCH, PHASE IV, UNIT NO. 1, ALSO BEING A NORTHERLY LINE OF Mc KENZIE TRAIL, SHOWN AS N 88°45'26" W IN BOOK 7 OF MAPS AT PAGE 104, PLUMAS COUNTY RECORDS.
(SEE SHEET 3 OF CONTINUATION OF NOTES)

WHITEHAWK RANCH
PHASE IV, UNIT NO. 1
7 M 104

**WHITEHAWK RANCH
PHASE VI**

A PLANNED DEVELOPMENT
FOR
WHITEHAWK DEVELOPMENT GROUP, LLC
WITHIN SECTION 32, T. 22 N., R. 13 E., M.D.M.
PLUMAS COUNTY, CALIFORNIA

PREPARED BY:
LARRY FITES ENGINEERING
P.O. BOX 20308
GRAEAGLE, CALIFORNIA 96103
R.C.E. 13225