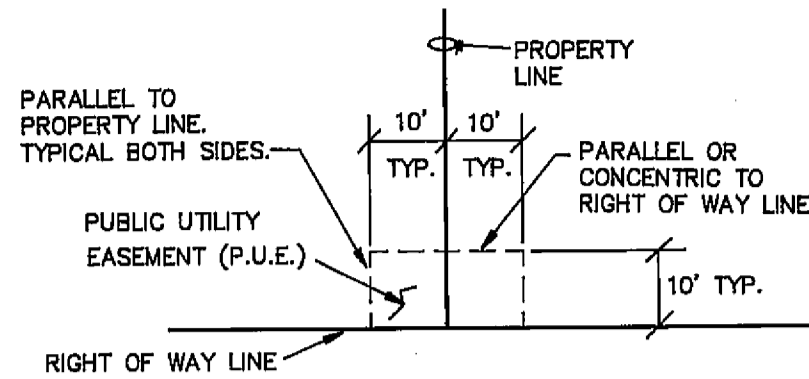


**NOTES - cont.:**

- 15.00' WIDE DRAINAGE EASEMENT, THE NORTHERLY LINE BEING COINCIDENT WITH THE CENTERLINE OF THE EPHEMERAL WATERCOURSE AS SHOWN HEREON.
- AN ADDITIONAL INFORMATION DOCUMENT IS BEING RECORDED CONCURRENTLY WITH THIS SUBDIVISION MAP IN BOOK 671 OF OFFICIAL RECORDS AT PAGE 279, PLUMAS COUNTY RECORDS.



**TYPICAL DETAIL**  
PUBLIC UTILITY EASEMENT (P.U.E.)  
(AT LOCATIONS SHOWN)

**CURVE TABLE**

CURVE	RADIUS	LENGTH	DELTA
K-4	95.00'	31.00'	18°41'49"
K-5	120.00'	15.28'	07°17'14"
P-2	75.00'	13.70'	10°27'50"
Q	30.00'	17.77'	33°55'52"
S	265.00'	38.47'	08°19'02"
V	(270.00')	35.70'	07°34'32"
W	30.00'	45.88'	87°38'58"
X	15.00'	39.34'	150°15'08"
Y	130.00'	3.17'	01°23'42"
Z	130.00'	103.17'	45°28'13"
Z-1	130.00'	38.06'	16°46'26"
Z-2	130.00'	61.84'	27°16'05"
Z-3	130.00'	19.74'	08°42'02"

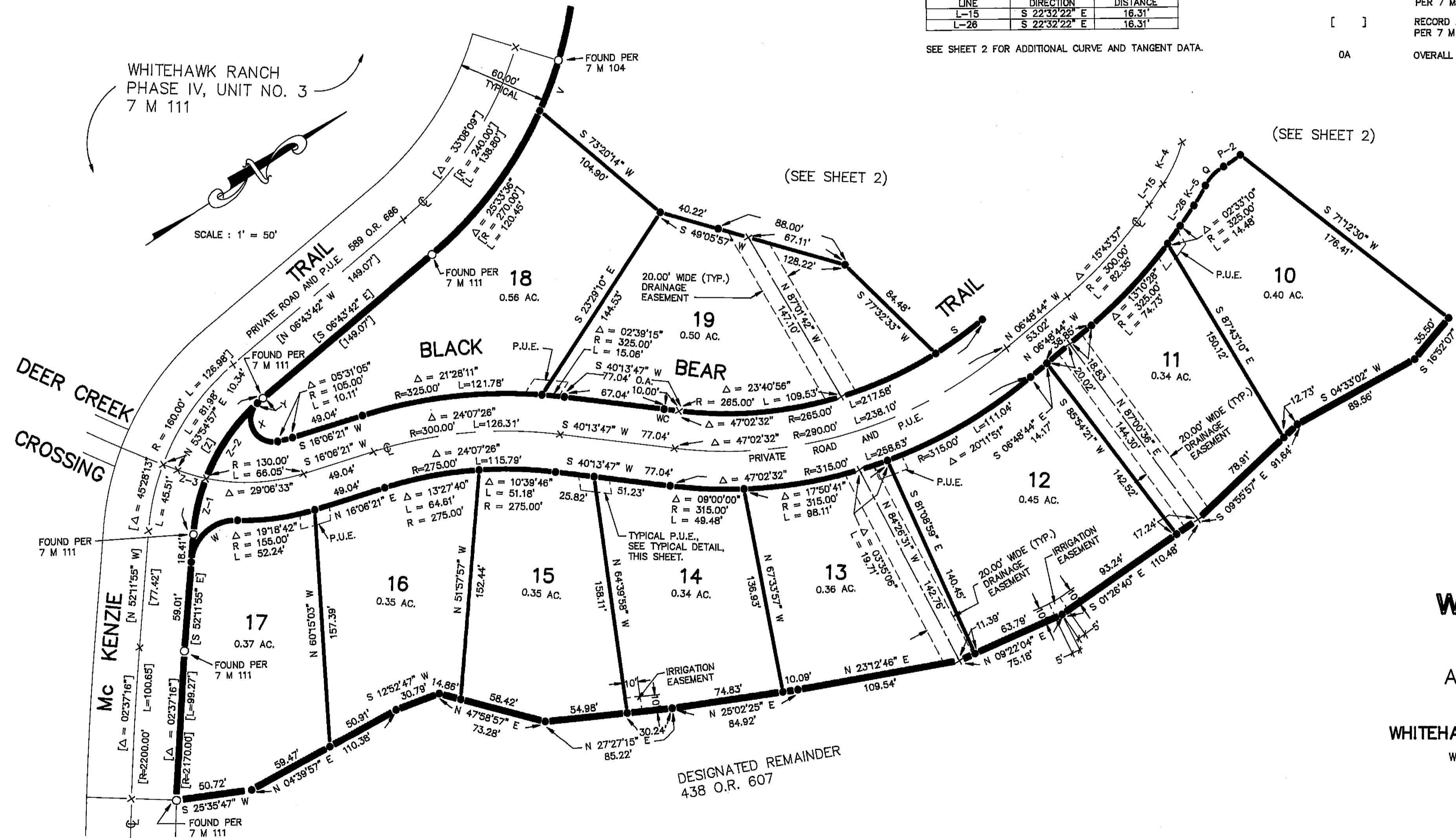
**TANGENT TABLE**

LINE	DIRECTION	DISTANCE
L-15	S 22°32'22" E	16.31'
L-26	S 22°32'22" E	16.31'

SEE SHEET 2 FOR ADDITIONAL CURVE AND TANGENT DATA.

**LEGEND**

- FOUND MONUMENT : 1/2" REBAR WITH ALUMINUM CAP STAMPED R.C.E. 13225, PER 7 M 104 OR 7 M 111, AS NOTED.
- SET 1/2" REBAR WITH ALUMINUM CAP STAMPED R.C.E. 13225.
- SET 1/2" REBAR WITH ALUMINUM CAP - WITNESS CORNER STAMPED R.C.E. 13225 WC
- + COMPUTED POINT, NOTHING SET.
- 589 O.R. 686 OFFICIAL RECORD, VOLUME AND PAGE.
- 7 M 104 MAPS, BOOK AND PAGE.
- P.U.E. PUBLIC UTILITY EASEMENT
- ( ) RECORD AND MEASURED DATA PER 7 M 104.
- [ ] RECORD AND MEASURED DATA PER 7 M 111.
- 0A OVERALL DISTANCE



**WHITEHAWK RANCH  
PHASE VI**

A PLANNED DEVELOPMENT  
FOR  
WHITEHAWK DEVELOPMENT GROUP, LLC  
WITHIN SECTION 32, T. 22 N., R. 13 E., M.D.M.  
PLUMAS COUNTY, CALIFORNIA

PREPARED BY:  
**LARRY FITES ENGINEERING**  
P.O. BOX 20308  
GRAEAGLE, CALIFORNIA 96103  
R.C.E. 13225