

OWNER'S STATEMENT

WE HEREBY CERTIFY THAT WE ARE THE OWNERS OF THE LAND SHOWN ON THIS SUBDIVISION MAP, WE CONSENT TO THE PREPARATION AND RECORDING OF THIS MAP, AND WE ARE THE ONLY PERSONS WHOSE CONSENT IS REQUIRED TO PASS CLEAR TITLE TO SAID LANDS.

SEQUOIA CIRCLE, ALDER COURT, ASPEN COURT, POPLAR COURT AND OAK COURT ARE HEREBY DEDICATED TO THE COUNTY OF PLUMAS, CALIFORNIA, FOR PUBLIC ROADWAY, DRAINAGE AND UTILITY PURPOSES.

DI LORETO/PLUMAS LTD., A CALIFORNIA LIMITED PARTNERSHIP

BY: DI LORETO RESORT PROPERTIES, INC., A NEVADA CORPORATION, GENERAL PARTNER

Thomas A. Di Loreto
THOMAS A. DI LORETO
VICE PRESIDENT

STATE OF NEVADA }
} S.S.
COUNTY OF WASHOE }

ON THIS 5th DAY OF July, 1991, BEFORE ME, THE UNDERSIGNED, A NOTARY PUBLIC IN AND FOR SAID STATE AND COUNTY, PERSONALLY APPEARED THOMAS A. DI LORETO, KNOWN TO ME TO BE THE PERSON WHO EXECUTED THE FOREGOING INSTRUMENT AS VICE PRESIDENT OF DI LORETO RESORT PROPERTIES, INC., A NEVADA CORPORATION, THE CORPORATION THEREIN NAMED, AND ACKNOWLEDGED TO ME THAT SAID CORPORATION EXECUTED THE FOREGOING INSTRUMENT PURSUANT TO ITS BY-LAWS OR A RESOLUTION OF ITS BOARD OF DIRECTORS, SAID CORPORATION BEING KNOWN TO ME TO BE THE GENERAL PARTNER OF DI LORETO/PLUMAS LTD., A CALIFORNIA LIMITED PARTNERSHIP, THE PARTNERSHIP THAT EXECUTED THE FOREGOING INSTRUMENT, AND ACKNOWLEDGED TO ME THAT SUCH CORPORATION EXECUTED THE SAME AS SUCH PARTNER AND THAT SUCH PARTNERSHIP EXECUTED THE SAME.

WITNESS MY HAND AND OFFICIAL SEAL.

Notary Public in and for said state and county
MY COMMISSION EXPIRES: Nov. 13, 1993



TRUSTEE'S CERTIFICATE

CAL-SIERRA TITLE COMPANY A CALIFORNIA CORPORATION, AS TRUSTEE UNDER THAT DEED OF TRUST RECORDED JUNE 1988 IN BOOK 481, PAGE 240 OF PLUMAS COUNTY OFFICIAL RECORDS, DOES HEREBY CONSENT TO PREPARATION AND RECORDING OF THIS MAP.

CAL-SIERRA TITLE COMPANY

BY: David G. Windle
DAVID G. WINDLE
PRESIDENT
DATE: 7/23/91

STATE OF CALIFORNIA }
} S.S.
COUNTY OF PLUMAS }

ON THIS 23 DAY OF July, 1991, BEFORE ME, THE UNDERSIGNED, A NOTARY PUBLIC IN AND FOR SAID STATE AND COUNTY, PERSONALLY APPEARED DAVID G. WINDLE, KNOWN TO ME TO BE THE PRESIDENT OF CAL-SIERRA TITLE COMPANY, WHO EXECUTED THE FOREGOING INSTRUMENT AND ACKNOWLEDGED TO ME THAT SAID CORPORATION EXECUTED THE FOREGOING INSTRUMENT PURSUANT TO ITS BY-LAWS OR A RESOLUTION OF ITS BOARD OF DIRECTORS.

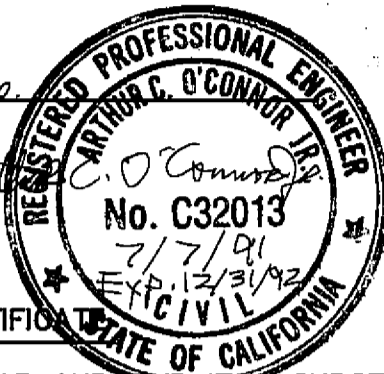
WITNESS MY HAND AND OFFICIAL SEAL.

Notary Public in and for said state and county
MY COMMISSION EXPIRES: May 3, 1992

ENGINEER'S STATEMENT

THIS MAP AND THE SURVEY PERFORMED THEREFORE IN JANUARY, 1991, WERE MADE BY ME OR UNDER MY DIRECTION. THE SURVEY IS TRUE AND COMPLETE AS SHOWN. ALL THE MONUMENTS SHOWN HEREON ARE OF THE CHARACTER AND OCCUPY THE POSITIONS INDICATED, OR THEY WILL BE SET IN SUCH POSITIONS ON OR BEFORE ONE YEAR AFTER THE RECORDATION OF THIS MAP BY THE PLUMAS COUNTY RECORDER. THE MONUMENTS ARE OR WILL BE SUFFICIENT TO ENABLE THE SURVEY TO BE RETRACED.

Arthur C. O'Connor Jr.
ARTHUR C. O'CONNOR JR.
R.C.E. NO. C32013
DATE: 7 July 1991



COUNTY ENGINEER'S CERTIFICATE

I HAVE EXAMINED THIS MAP AND FIND IT IS SUBSTANTIALLY THE SAME AS IT APPEARED ON THE TENTATIVE MAP AND ANY APPROVED ALTERATIONS THEREOF. ALL PROVISIONS OF THE SUBDIVISION MAP ACT AND ANY LOCAL ORDINANCES APPLICABLE AT THE TIME OF APPROVAL OF THE TENTATIVE MAP HAVE BEEN COMPLIED WITH AND I AM SATISFIED THAT THE MAP IS TECHNICALLY CORRECT.

SIGNED: Lawrence J. Brock
LAWRENCE J. BROCK, R.C.E. 13528
COUNTY ENGINEER
LICENSE EXP. 3/31/93
DATE: 10/8/91

COUNTY TAX COLLECTOR'S CERTIFICATE

I, BARBARA J. COATES, TAX COLLECTOR OF THE COUNTY OF PLUMAS, STATE OF CALIFORNIA, DO HEREBY CERTIFY THAT THERE ARE NO TAX LIENS AGAINST THE LOTS AS SHOWN HEREON, FOR UNPAID STATE, COUNTY, MUNICIPAL OR LOCAL TAXES OR SPECIAL ASSESSMENTS COLLECTED AS TAXES, EXCEPT TAXES OR ASSESSMENTS NOT YET PAYABLE. TAXES OR ASSESSMENTS WHICH ARE A LIEN BUT NOT YET PAYABLE, ARE ESTIMATED TO BE IN THE AMOUNT OF \$ 700.00

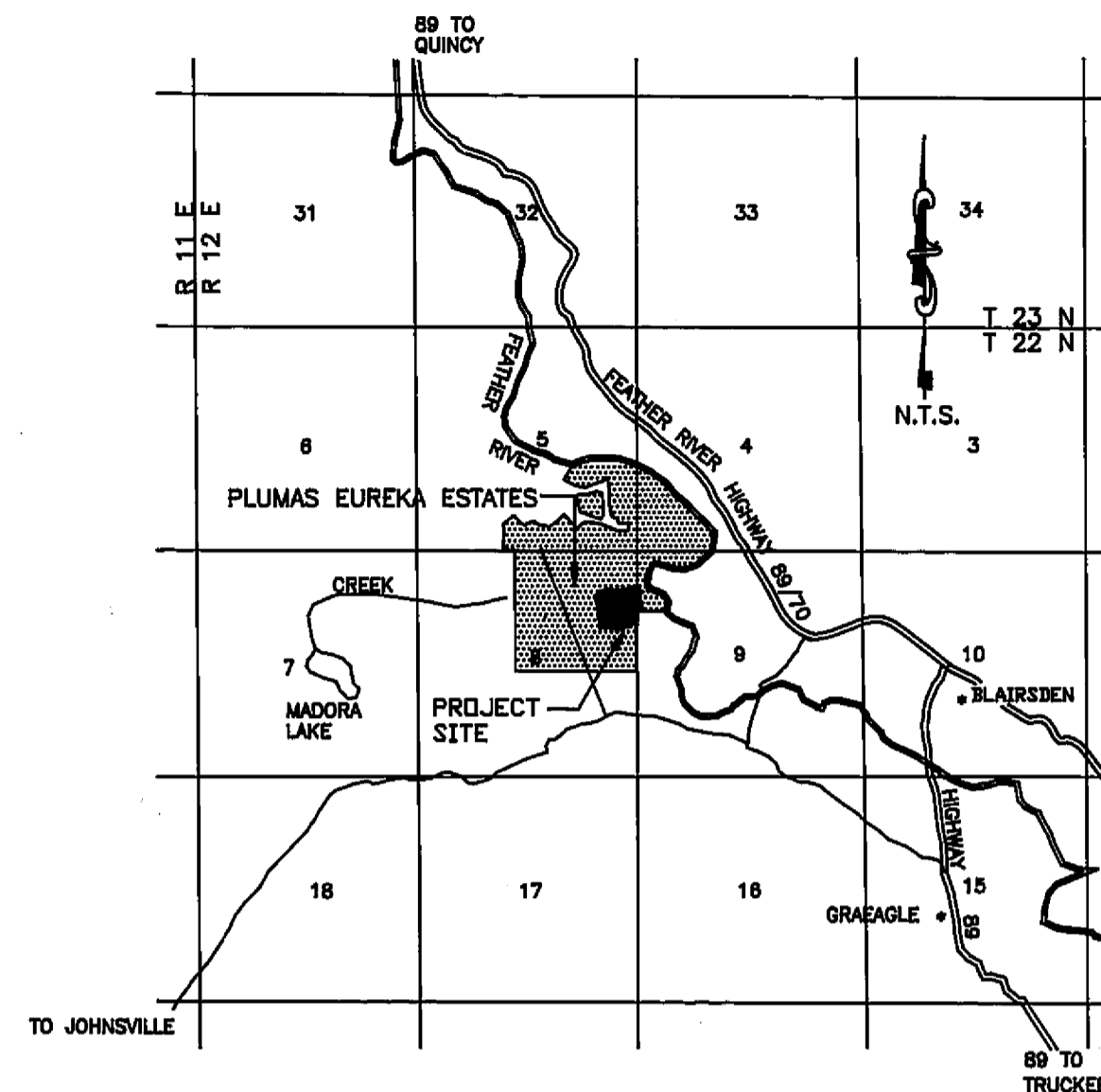
Barbara J. Coates By: Jimmy Dunbar
BARBARA J. COATES
PLUMAS COUNTY TAX COLLECTOR
DATE: 8-5-91

COUNTY CLERK'S CERTIFICATE

I, JUDITH WELLS, CLERK OF THE COUNTY OF PLUMAS, STATE OF CALIFORNIA, AND EX-OFFICIO OF THE BOARD OF SUPERVISORS OF SAID COUNTY, HEREBY CERTIFY THAT THE HEREIN EMBODIED MAP WAS APPROVED BY SAID BOARD OF SUPERVISORS CONVENED IN A REGULAR MEETING ON THE 8th DAY OF October, 1991, AND DEDICATED RIGHT-OF-WAYS (SEQUOIA CIRCLE, ALDER COURT, ASPEN COURT, POPLAR COURT AND OAK COURT) WERE ACCEPTED FOR THE PUBLIC USES NOTED.

JUDITH WELLS
COUNTY CLERK

BY: Joannet Seibee
TITLE: Asst. County Clerk
DATE: 10-8-91



VICINITY MAP

COUNTY RECORDER'S CERTIFICATE

FILED THIS 9th DAY OF October, 1991, AT 2:36 AM. IN BOOK 7 OF MAPS, AT PAGES 27-33, AT THE REQUEST OF THE COUNTY ENGINEER.

JUDITH WELLS
COUNTY RECORDER

BY: Bob Lammack
DEPUTY

FEE: \$17.00
FILE NO.: 8146

SHEET 1 OF 7

Engineering logo and address: P.O. BOX 10307, RENO, NEVADA 89510, 702-851-7335. RENO OFFICE: 10985 DRYDEN DRIVE. SUBDIVISION MAP OF PLUMAS-EUREKA ESTATES UNIT 7 PHASE III A PLANNED DEVELOPMENT FOR DI LORETO /PLUMAS LTD. JURAT SHEET. POR. E1/2 OF NE1/4 OF SEC. 8 & W1/2 OF NW1/4 OF SEC. 9, T. 22 N, R. 12 E, M.D.B.&M. PLUMAS COUNTY CALIFORNIA

7 M 27

Certificate of correction
OK Bk 607 pg 556
Doc # 6058 on 08/16/1993