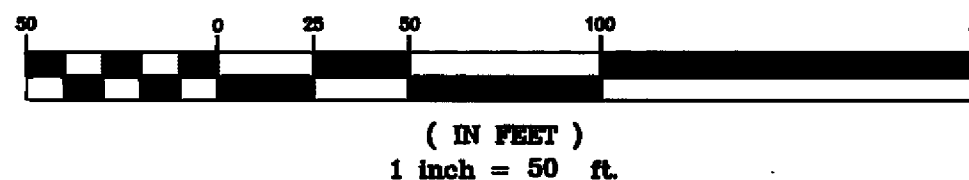


GRAPHIC SCALE



CURVE TABLE

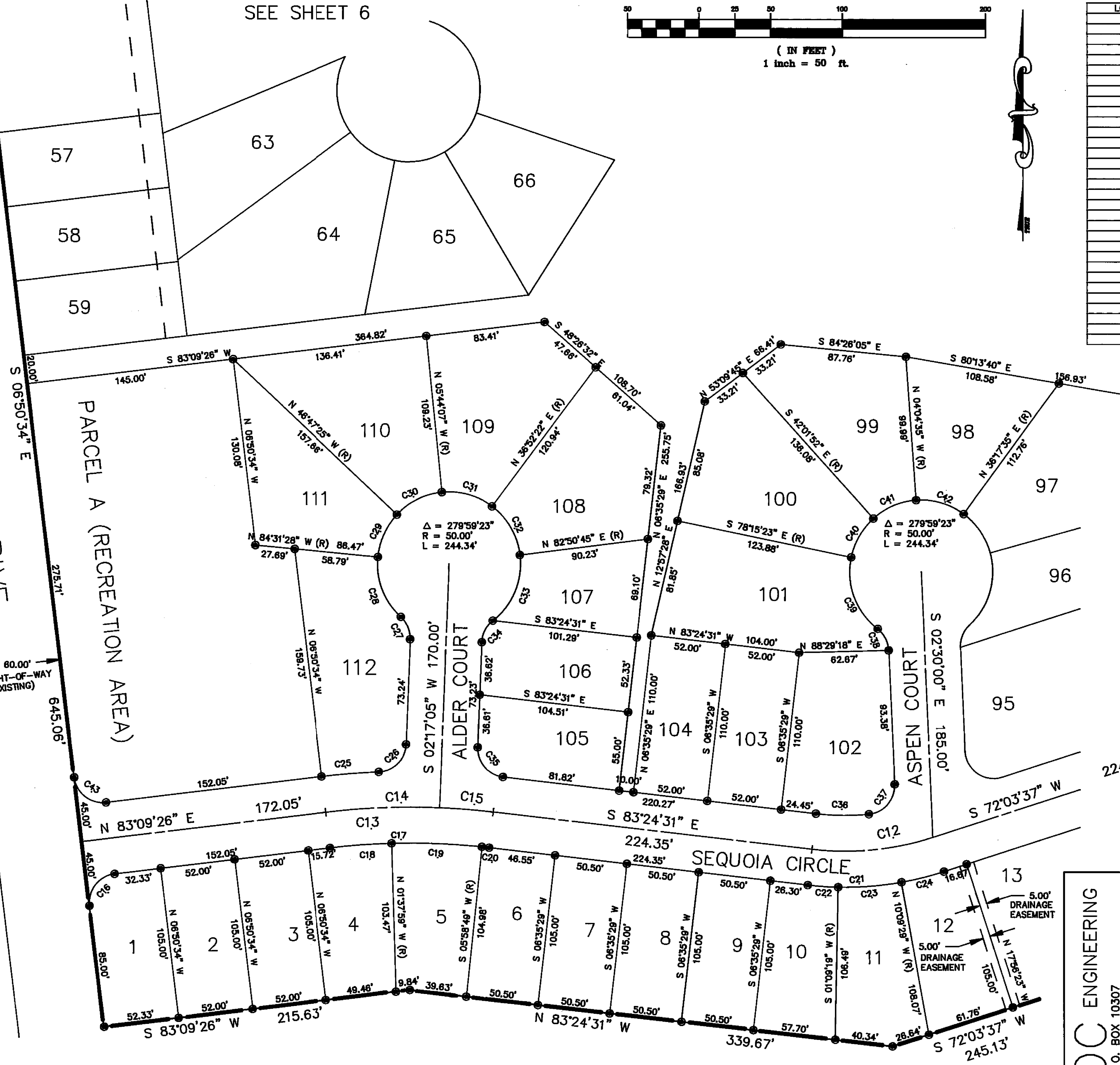
LOT	CURVE	RADIUS	LENGTH	CHORD	BEARING	DELTA
none	C12	200.00'	85.83'	84.98'	N 84°19'33" E	24°31'52"
none	C13	500.00'	117.24'	116.97'	S 89°52'28" W	13°28'03"
none	C14	500.00'	79.85'	79.57'	S 87°43'15" W	09°07'39"
none	C15	500.00'	37.58'	37.57'	N 85°33'43" W	04°18'24"
1	C16	20.00'	31.42'	28.28'	S 38°09'28" W	90°00'00"
none	C17	475.00'	111.37'	111.12'	S 89°52'28" W	13°28'03"
4	C18	475.00'	43.19'	43.18'	N 85°45'44" E	05°12'55"
5	C19	475.00'	63.12'	63.07'	S 87°48'55" E	07°38'47"
6	C20	475.00'	5.07'	5.07'	S 83°42'51" E	00°38'40"
none	C21	225.00'	98.33'	95.60'	N 84°19'33" E	24°31'52"
10	C22	225.00'	21.35'	21.34'	S 86°07'38" E	05°28'10"
11	C23	225.00'	44.43'	44.36'	N 85°29'55" E	11°18'48"
12	C24	225.00'	30.56'	30.53'	N 75°57'04" E	07°48'54"
112	C25	525.00'	40.24'	40.23'	N 85°21'10" E	04°23'28"
112	C26	20.00'	28.76'	28.76'	N 44°54'59" E	85°15'50"
112	C27	20.00'	17.45'	16.90'	N 22°42'46" W	49°59'41"
112	C28	50.00'	48.41'	44.76'	N 21°07'02" W	53°11'08"
111	C29	50.00'	32.93'	32.34'	N 24°20'34" E	37°44'03"
110	C30	50.00'	35.83'	35.07'	N 83°44'14" E	41°03'18"
109	C31	50.00'	37.18'	36.33'	S 74°25'53" E	42°38'29"
108	C32	50.00'	40.12'	39.05'	S 30°08'27" E	45°58'23"
107	C33	50.00'	51.87'	49.57'	S 22°33'45" W	59°28'01"
106	C34	20.00'	17.45'	16.90'	N 27°16'55" E	49°59'41"
105	C35	20.00'	29.91'	27.20'	S 40°33'43" E	85°41'36"
102	C36	175.00'	37.08'	37.01'	S 89°28'44" E	12°08'28"
102	C37	20.00'	30.35'	27.52'	N 40°58'32" E	86°57'03"
101	C38	20.00'	17.45'	16.90'	N 27°29'51" W	49°59'41"
101	C39	50.00'	56.08'	53.17'	N 20°22'32" W	64°14'18"
100	C40	50.00'	31.61'	31.09'	N 29°51'23" E	38°13'31"
99	C41	50.00'	33.12'	32.52'	N 66°56'47" E	37°57'18"
98	C42	50.00'	35.23'	34.50'	S 73°53'30" E	40°22'10"
A	C43	20.00'	31.42'	28.28'	S 51°50'34" E	90°00'00"

LEGEND

- C42 CURVE NUMBER - SEE CURVE TABLE
- PROPERTY CORNER - TO BE SET (5/8" REBAR W/ PLASTIC "RCE 32013")
- - - EASEMENT - AS DESCRIBED
- (R) RADIAL BEARING

COTTONWOOD DRIVE

PARCEL A (RECREATION AREA)



SHEET 3 OF 7

ENGINEERING
 P. O. BOX 10307
 RENO, NEVADA 89510
 702-851-7335
 RENO OFFICE: 10985 DRYDEN DRIVE

SUBDIVISION MAP
 OF
 PLUMAS-EUREKA ESTATES
 UNIT 7 PHASE III
 A PLANNED DEVELOPMENT FOR
 DI LORETO/PLUMAS LTD.
 LOT DETAILS
 LOTS 1-12, 98-112 & PARCEL A
 POR. E1/2 OF NE1/4 OF SEC. 8 & W1/2 OF NW1/4 OF SEC. 9, T. 22 N, R. 12 E, M.D.B.M.
 PLUMAS COUNTY CALIFORNIA