

CURVE TABLE

LOT	CURVE	RADIUS	LENGTH	CHORD	BEARING	DELTA
none	C1	300.00'	178.47'	173.94'	S 72°50'52" W	33°42'11"
none	C2	300.00'	77.45'	77.23'	S 63°23'30" W	14°47'28"
none	C3	300.00'	99.02'	98.57'	S 80°14'35" W	18°54'43"
54	C102	20.00'	35.70'	31.14'	S 72°52'28" E	102°15'32"
55	C103	20.00'	28.98'	24.98'	S 17°21'15" W	77°17'02"
none	C104	325.00'	191.17'	188.43'	S 72°50'52" W	33°42'11"
51	C105	325.00'	53.86'	53.80'	N 60°43'33" E	09°27'33"
50	C106	325.00'	53.85'	53.58'	N 70°11'05" E	09°27'32"
49	C107	325.00'	48.24'	48.20'	N 79°10'01" E	08°30'19"
48	C108	325.00'	35.82'	35.60'	N 86°33'34" E	06°18'47"
60	C109	275.00'	25.32'	25.31'	S 58°38'02" W	05°16'33"
60	C110	20.00'	33.53'	29.74'	N 70°41'51" W	96°03'41"
69	C111	20.00'	36.41'	31.59'	S 29°29'37" W	104°19'14"
69	C112	275.00'	38.81'	38.58'	S 85°40'35" W	08°02'43"
62	C113	20.00'	17.45'	16.90'	N 02°19'51" E	49°59'41"
63	C114	50.00'	55.73'	52.89'	S 04°38'01" E	63°51'25"
64	C115	50.00'	37.05'	36.21'	S 57°45'22" E	42°27'18"
65	C116	50.00'	36.22'	35.43'	N 80°15'55" E	41°30'07"
66	C117	50.00'	35.85'	34.90'	N 39°05'23" E	40°50'58"
67	C118	50.00'	36.91'	36.08'	S 02°29'02" E	42°17'55"
68	C119	50.00'	42.79'	41.49'	S 48°08'50" E	49°01'42"
68	C120	20.00'	17.45'	16.90'	N 47°39'51" E	49°59'41"
55	C121	230.00'	27.92'	27.90'	S 17°48'37" E	06°57'18"
56	C122	230.00'	30.07'	30.05'	S 10°35'16" E	07°29'24"

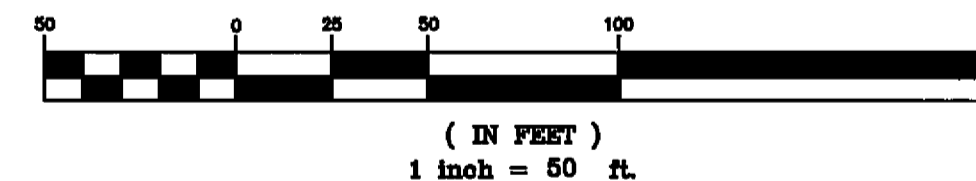
LINE TABLE

LINE	DIRECTION	DISTANCE
L11	S 89°41'57" W	10.00'
L12	S 22°40'00" E	24.15'
L13	N 89°41'57" E	16.36'
L14	S 06°50'34" E	20.00'
L15	S 06°50'34" E	18.35'
L16	N 06°50'34" W	16.12'

LEGEND

- C42 CURVE NUMBER - SEE CURVE TABLE
- L1 LINE NUMBER - SEE LINE TABLE
- PROPERTY CORNER - TO BE SET (5/8" REBAR W/ PLASTICAP "RCE 32013")
- FOUND POINT - AS DESCRIBED
- EASEMENT - AS DESCRIBED
- (R) RADIAL BEARING

GRAPHIC SCALE



SEE SHEET 5

SHEET 6 OF 7

**OC ENGINEERING**  
 P. O. BOX 10307  
 RENO, NEVADA 89510  
 702-851-7335  
 RENO OFFICE: 10985 DRYDEN DRIVE

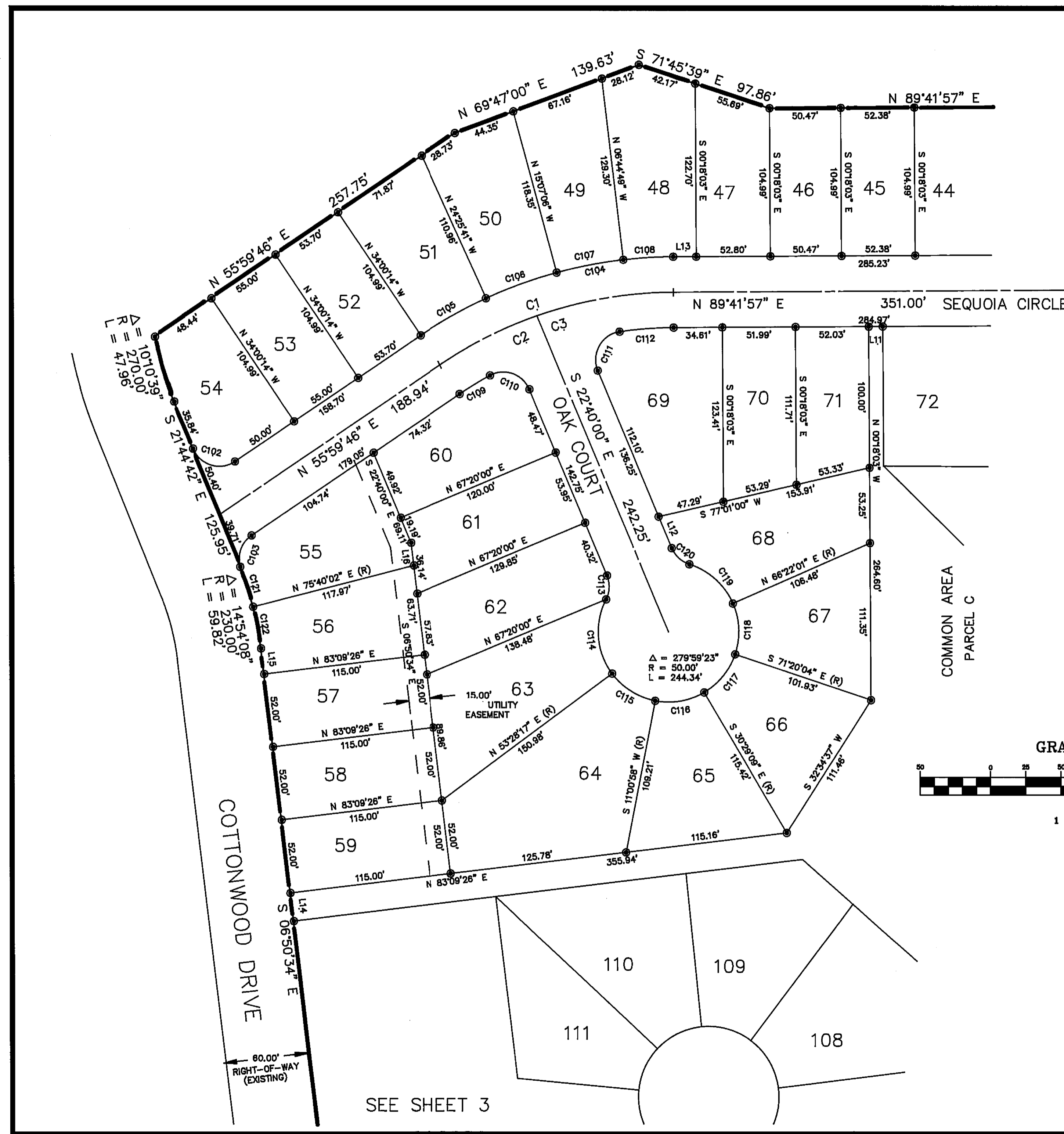
SUBDIVISION MAP  
 OF  
 PLUMAS-EUREKA ESTATES

UNIT 7 PHASE III

A PLANNED DEVELOPMENT FOR  
 DI LORETO/PLUMAS LTD.

LOT DETAILS  
 LOTS 45-71

FOR: E1/2 OF NE1/4 OF SEC. 8 & W1/2 OF NW1/4 OF SEC. 9, T. 22 N, R. 12 E, M.D.B.&M.  
 PLUMAS COUNTY CALIFORNIA



SEE SHEET 3