

COUNTY TAX COLLECTOR'S CERTIFICATE

I, Barbara J. Coates, Tax Collector of the County of Plumas, State of California, do hereby certify that there are no tax liens against the Lots, as shown hereon, for unpaid state, county, municipal, or local taxes or special assessments collected as taxes, except taxes or assessments not yet payable. Taxes or assessments which are a lien but not yet payable, are estimated to be in the amount of \$ 553.00.

DATED: 6/9/92

Barbara J. Coates by Jimmy Dunbar, asst.
BARBARA J. COATES
PLUMAS COUNTY TAX COLLECTOR

COUNTY CLERK'S CERTIFICATE

I, Judith Wells, Clerk of the County of Plumas, State of California and Ex-Officio Clerk of the Board of Supervisors of said county, hereby certify that the herein embodied map was approved by the said board of supervisors convened in a regular meeting upon the 9th day of June, 1992.

The offer of dedication of Pine Knoll Court, a private road, as a 60 foot wide public utility easement, the easement on the Easterly line of Lot 6 as a 10 foot wide public utility easement, the easement on the Northerly and Easterly side of Pine Knoll Court as a 10 foot wide public utility easement and the easement on the Southerly line of Pine Knoll Court at the beginning of the curve as a 10 foot square public utility easement as shown on this map were accepted for the uses noted.

DATED: 6-10-92

by: *Judith Wells*
JUDITH WELLS
PLUMAS COUNTY CLERK

OWNER'S STATEMENT

We, the undersigned, having record title interest in the hereon subdivided lands do hereby consent to the preparation and recordation of this map. The easements shown on this map to be created by recordation thereof are created with our consent and are hereby declared for the uses stated. Pine Knoll Court is declared as a private road and is dedicated as a 60 foot wide public utility easement. The easement on the Easterly line of Lot 6 is dedicated as a 10 foot wide public utility easement, the easement on the Northerly and Easterly side of Pine Knoll Court is dedicated as a 10 foot wide public utility easement and the easement on the Southerly line of Pine Knoll Court at the beginning of the curve is dedicated as a 10 foot square public utility easement as shown on this map.

Donald Kozlowski
Donald Kozlowski
Janet Kozlowski
Janet Kozlowski

State of California }
County of Plumas } SS.

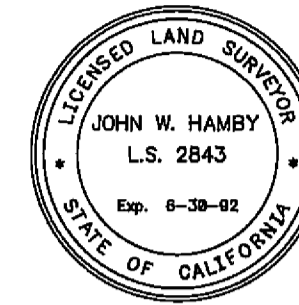
On Jan. 3, 1992, before me, the undersigned, a Notary Public in and for said State, personally appeared Donald Kozlowski and Janet Kozlowski, known to me to be the persons whose names are subscribed to the within instrument and acknowledged that they executed the same.

WITNESS my hand and official seal

John W. Hamby
NOTARY PUBLIC
Jan. 24, 1994
MY COMMISSION EXPIRES

SURVEYOR'S STATEMENT

This map and the survey performed therefore in October, 1991, were made by me or under my direction. The survey is true and complete as shown. All of the monuments shown hereon are of the character and occupy the positions indicated and are sufficient to enable the survey to be retraced.



DATED: 12-20-91

John W. Hamby
JOHN W. HAMBY L.S.2843

COUNTY SURVEYOR'S STATEMENT

I have examined this map and find it is substantially the same as it appeared on the tentative map and any approved alterations thereof. All provisions of the Subdivision Map Act and any local ordinances applicable at the time of approval of the tentative map have been complied with and I am satisfied that the map is technically correct.

DATED June 8, 1992

R. Tom Hunter
R. TOM HUNTER R.C.E. 30515
Plumas County Surveyor
License Expiration Date 3/31/96

COUNTY RECORDER'S CERTIFICATE

Filed this 10th day of JUNE, 1992, at 2:49 p.m. in Book 7 of Maps, at page 60-61, at the request of the County Engineer.

FEE 7.00

JUDITH WELLS, County Recorder

FILE NO. 4419

Lillian Payne
DEPUTY

Basis of Bearings

The Basis of Bearings of this map is the West line of the NW 1/4 of the NW 1/4 of Section 9, shown as N 01°36'44" E in Book 9 RS 19 Plumas County records.

Area Breakdown

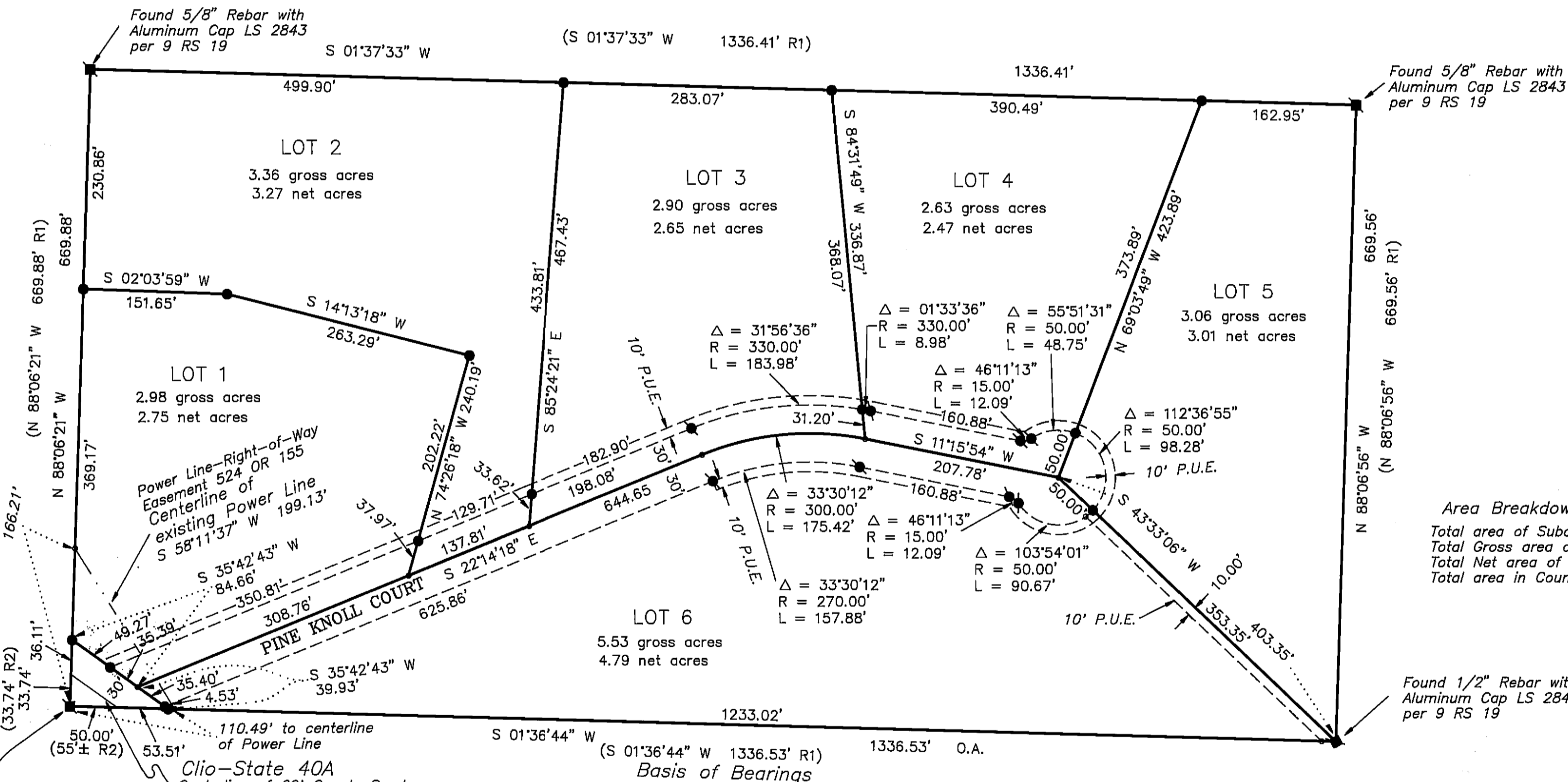
Total area of Subdivision 20.54 acres
Total Gross area of Lots 20.46 acres
Total Net area of Lots 18.94 acres
Total area in County Road easement 0.08 acres

PINE KNOLL ESTATES
SUBDIVISION
A Planned Development
for
Donald & Janet Kozlowski

A Portion of the NW 1/4 of Section 9
T. 22 N., R. 13 E., M.D.M.
Plumas County - California
Scale 1" = 100' October, 1991

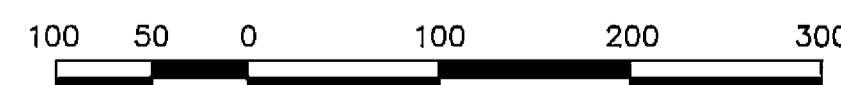
Hamby Surveying Inc.
P.O. Box 1209
Portola, CA 96122
Phone (916) 832-5571

Sheet 1 of 2



LEGEND

- FOUND point as described
- SET 5/8" Rebar with Plastic Cap LS 2843
- SET 5/8" Rebar with Aluminum CAP LS 2843
- Nothing found or set
- (R1) RECORD per 9 RS 19
- (R2) RECORD per 524 OR 152
- P.U.E. Public Utility Easement



1" = 100'