

OWNER'S STATEMENT

MOHAWK VALLEY RANCH, INC. DBA WHITEHAWK RANCH, HAVING RECORD TITLE INTEREST IN THE HEREON SUBDIVIDED LANDS DO HEREBY CONSENT TO THE PREPARATION AND RECORDATION OF THIS MAP.

MINER'S PASSAGE, GUAILE VIEW CIRCLE, AND Mc KENZIE TRAIL AS SHOWN ON THE MAP ARE HEREBY OFFERED FOR DEDICATION FOR PUBLIC UTILITY PURPOSES, AND FOR USE BY PUBLIC LAW ENFORCEMENT AND FIRE PROTECTION AGENCIES AND THEIR VEHICLES AND PERSONNEL WHILE ON OFFICIAL BUSINESS.

PUBLIC UTILITY EASEMENTS (P.U.E.) AS SHOWN ON THE MAP ARE HEREBY OFFERED FOR DEDICATION FOR SUCH PURPOSES.

OPEN SPACE EASEMENT (O.S.E.) AS SHOWN ON THE MAP WILL BE GRANTED TO THE COMMON USE AND ENJOYMENT OF THE OWNERS OF LOTS 1 THROUGH 10 AND LOTS 39 THROUGH 62 OF WHITEHAWK RANCH PHASE II UNIT NO. 1 AND OWNERS OF LOTS IN ANY OTHER PHASE OF WHITEHAWK RANCH FOR THE PROTECTION OF LIGHT, SPACE, NATURAL ENVIRONMENT AND HABITAT, AND FOR RECREATION USES TO THE EXTENT SUCH USES ARE CONSISTENT WITH THE ABOVE-DESCRIBED EASEMENTS. SAID O.S.E. WILL BE MAINTAINED BY THE WHITEHAWK RANCH HOMEOWNER'S ASSOCIATION.

MOHAWK VALLEY RANCH, INC. DBA WHITEHAWK RANCH

BY: Hugh A. White TITLE: CEO
HUGH A. WHITE

STATE OF CALIFORNIA)
COUNTY OF PLUMAS) SS.

ON THIS 10th DAY OF November IN THE YEAR 1992, BEFORE ME, THE UNDERSIGNED, A NOTARY PUBLIC IN AND FOR SAID COUNTY AND STATE, PERSONALLY APPEARED Hugh A. White KNOWN TO ME TO BE THE Chief Executive Officer OF THE CORPORATION THAT EXECUTED THE WITHIN INSTRUMENT ON BEHALF OF THE CORPORATION THEREIN NAMED, AND ACKNOWLEDGED TO ME THAT SUCH CORPORATION EXECUTED THE SAME.

Linda Carr
NOTARY PUBLIC IN AND FOR SAID COUNTY AND STATE

4-19-1996
MY COMMISSION EXPIRES:

COUNTY TAX COLLECTOR'S CERTIFICATE

I, BARBARA J. COATES, TAX COLLECTOR OF THE COUNTY OF PLUMAS, STATE OF CALIFORNIA, DO HEREBY CERTIFY THAT THERE ARE NO TAX LIENS AGAINST THE LOTS, AS SHOWN HEREON, FOR UNPAID STATE, COUNTY, MUNICIPAL, OR LOCAL TAXES OR SPECIAL ASSESSMENTS COLLECTED AS TAXES, EXCEPT TAXES OR ASSESSMENTS NOT YET PAYABLE. TAXES OR ASSESSMENTS WHICH ARE A LIEN BUT NOT YET PAYABLE ARE ESTIMATED TO BE IN THE AMOUNT OF \$ none.

DATED: 12-9-92
Barbara J. Coates by: Henry Dunbar
BARBARA J. COATES
PLUMAS COUNTY TAX COLLECTOR

ENGINEER'S STATEMENT

THIS MAP AND THE SURVEY PERFORMED THEREFORE IN SEPTEMBER 1992, WERE MADE BY ME OR UNDER MY DIRECTION. THE SURVEY IS TRUE AND COMPLETE AS SHOWN. ALL OF THE MONUMENTS SHOWN HEREON ARE OF THE CHARACTER AND OCCUPY THE POSITIONS INDICATED AND ARE SUFFICIENT TO ENABLE THE SURVEY TO BE RETRACED.

DATED: 11/6/92
Larry M. Fites
LARRY M. FITES
R.C.E. 13225
LICENSE EXP. DATE: 3/31/93

COUNTY SURVEYOR'S STATEMENT

I HAVE EXAMINED THIS MAP AND FIND IT IS SUBSTANTIALLY THE SAME AS IT APPEARED ON THE TENTATIVE MAP AND ANY APPROVED ALTERATIONS THEREOF. ALL PROVISIONS OF THE SUBDIVISION MAP ACT AND ANY LOCAL ORDINANCES APPLICABLE AT THE TIME OF APPROVAL OF THE TENTATIVE MAP HAVE BEEN COMPLIED WITH AND I AM SATISFIED THAT THE MAP IS TECHNICALLY CORRECT.

DATED: Dec 8, 1992
R. Tom Hunter
R. TOM HUNTER, R.C.E. 30515
PLUMAS COUNTY SURVEYOR
LICENSE EXP. DATE: 3/31/96

COUNTY CLERK'S CERTIFICATE

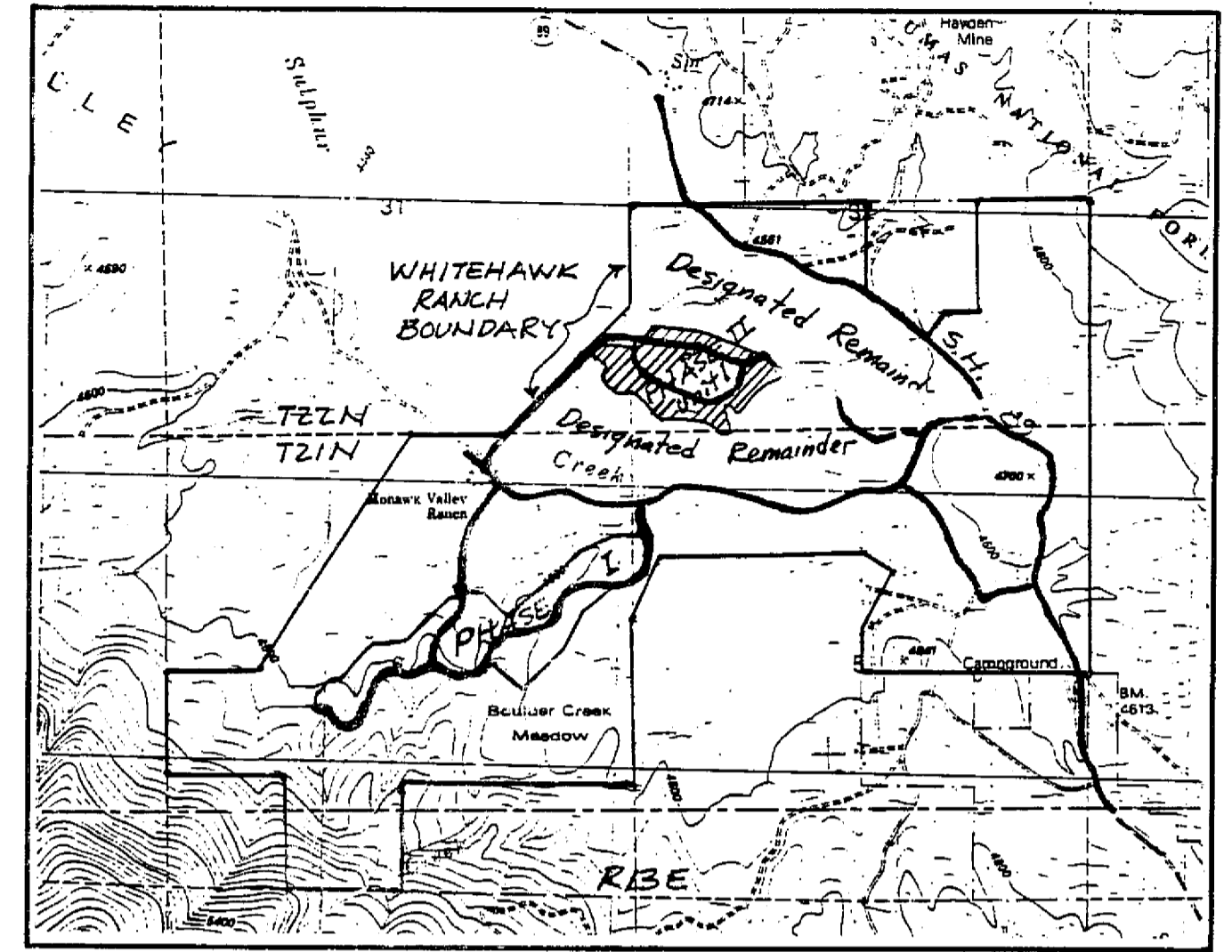
I, JUDITH WELLS, CLERK OF THE COUNTY OF PLUMAS, STATE OF CALIFORNIA AND EX-OFFICIO CLERK OF THE BOARD OF SUPERVISORS OF SAID COUNTY, HEREBY CERTIFY THAT THE HEREIN EMBODIED MAP WAS APPROVED BY SAID BOARD OF SUPERVISORS CONVENED IN A REGULAR MEETING UPON THE 8th DAY OF December, 1992. THE OFFER OF DEDICATION OF THE PUBLIC UTILITY EASEMENTS (P.U.E.), MINER'S PASSAGE, GUAILE VIEW CIRCLE AND MCKENZIE TRAIL AS SHOWN ON THE MAP WAS ACCEPTED FOR THE USES NOTED.

DATE: 12/10/92
Nancy L. La. Lomo, Deputy
JUDITH WELLS
COUNTY CLERK

COUNTY RECORDER'S STATEMENT

FILED THIS 11th DAY OF December, 1992, AT 2:05 P.M. IN BOOK 7 OF MAPS, AT PAGE 16:77 AT THE REQUEST OF THE COUNTY SURVEYOR.

FEE: \$ 700
FILE NO. 10948 DEPUTY
JUDITH WELLS
COUNTY RECORDER
BY: Sue A. Perry



LOCATION MAP
SCALE: 1" = 2000'

AREA TABULATION

LOTS 1 THROUGH 10 AND	
LOTS 39 THROUGH 62	27.95 ACRES
PRIVATE ROADS	5.50 ACRES
OPEN SPACE EASEMENT	2.88 ACRES
TOTAL	36.33 ACRES

**WHITEHAWK RANCH
PHASE II
UNIT NO. 1**

A PLANNED DEVELOPMENT

FOR

MOHAWK VALLEY RANCH, INC.
dba WHITEHAWK RANCH

WITHIN SECTIONS 31 AND 32
T. 22 N., R. 13 E., M.D.M
PLUMAS COUNTY, CALIFORNIA

PREPARED BY:

LARRY FITES ENGINEERING
P.O. BOX 20308
GRAEAGLE, CALIFORNIA 95103
R.C.E. 13225
SEPTEMBER 1992 SHEET 1 OF 2