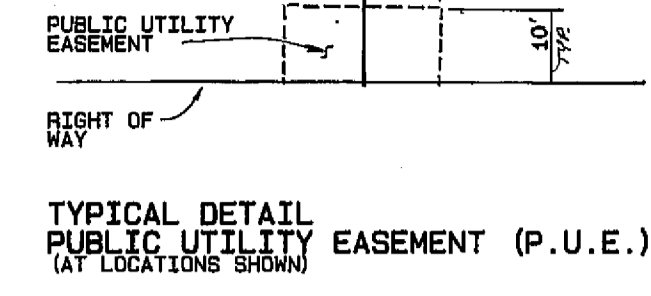


SCALE: 1" = 100'



TANGENT TABLE

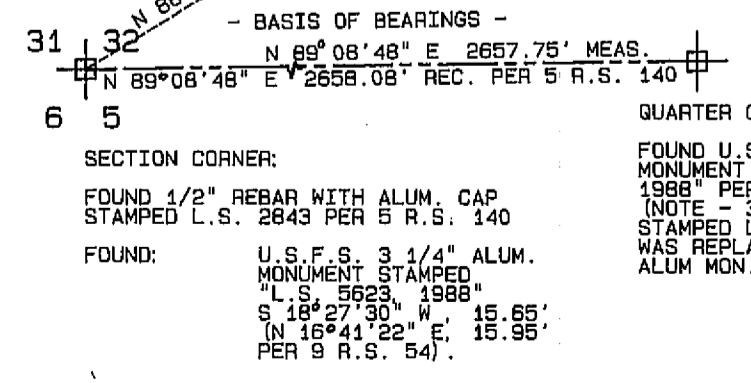
BEARING	LENGTH
1 S 67° 19' 47" E	35.00'
2 N 43° 21' 48" E	32.74'
3 N 49° 23' 55" E	20.00'
4 N 3° 38' 28" E	15.00'
5 N 45° 38' 37" W	45.80'
6 S 70° 35' 40" E	32.91'

CURVE TABLE

DELTA	RADIUS	LENGTH	TANGENT	DELTA	RADIUS	LENGTH	TANGENT
A 95° 23' 42"	25.00'	41.62'	27.47'	J 79° 40' 28"	25.00'	34.76'	20.86'
B 84° 34' 08"	25.00'	36.90'	22.74'	K 9° 57' 52"	230.00'	40.00'	20.05'
C 14° 21' 25"	600.00'	150.35'	75.57'	K1 20° 13' 19"	170.00'	60.00'	30.32'
C1 14° 21' 25"	570.00'	142.83'	71.79'	K2 30° 05' 36"	170.00'	89.29'	45.70'
C2 9° 09' 42"	630.00'	100.74'	50.48'	K3 40° 21' 03"	230.00'	161.98'	84.51'
C3 5° 11' 43"	630.00'	57.12'	28.58'	L 10° 27' 46"	230.00'	42.00'	21.06'
D 2° 09' 17"	830.00'	31.22'	15.61'	L1 8° 33' 57"	170.00'	25.42'	12.73'
D1 3° 43' 14"	770.00'	50.00'	25.01'	L2 25° 24' 21"	230.00'	106.00'	53.96'
D2 11° 18' 49"	830.00'	163.89'	82.21'	L3 50° 26' 07"	170.00'	149.64'	80.06'
D3 11° 46' 50"	770.00'	158.32'	79.44'	L4 22° 07' 57"	230.00'	88.85'	44.98'
D4 8° 20' 33"	830.00'	120.85'	60.53'	M 00° 19' 22"	2030.00'	11.43'	5.72'
D5 5° 18' 35"	770.00'	84.80'	42.44'	M1 4° 53' 09"	2030.00'	173.10'	86.60'
E 22° 43' 20"	275.00'	109.06'	55.26'	M2 2° 44' 50"	1970.00'	94.46'	47.24'
E1 13° 15' 40"	305.00'	70.59'	35.45'	M3 4° 14' 39"	1970.00'	145.93'	73.00'
E2 46° 35' 05"	275.00'	223.59'	118.39'	M4 2° 46' 58"	2030.00'	98.60'	49.31'
E3 10° 34' 50"	305.00'	56.32'	28.24'	M5 00° 59' 59"	1970.00'	34.38'	17.19'
E4 22° 15' 40"	305.00'	118.50'	60.01'	N 29° 53' 36"	230.00'	120.00'	61.40'
E5 7° 18' 50"	245.00'	31.27'	15.66'	N1 32° 22' 28"	230.00'	129.96'	66.77'
F 89° 07' 02"	25.00'	38.88'	24.62'	N2 4° 58' 56"	230.00'	20.00'	10.01'
F 23° 10' 03"	310.00'	125.35'	63.54'	N3 67° 15' 00"	170.00'	199.53'	113.05'
G1 23° 10' 03"	280.00'	113.22'	57.39'	O 78° 25' 29"	25.00'	34.22'	20.40'
G2 23° 10' 03"	340.00'	137.48'	69.69'	P 101° 34' 31"	25.00'	44.32'	30.64'
H 86° 52' 08"	25.00'	37.90'	23.67'	Q 1° 20' 35"	600.00'	14.06'	7.03'
I 81° 08' 10"	25.00'	35.40'	21.40'	R 4° 49' 13"	600.00'	50.48'	25.25'

MAP NOTES

- FOUND SECTION SUBDIVISION CORNER AS NOTED.
 - SET 1/2" REBAR WITH ALUMINUM CAP STAMPED R.C.E. 13225.
 - COMPUTED POINT, NOTHING SET.
 - (RAD.) INDICATES RADIAL BEARING
 - 5 R.S. 140 RECORD OF SURVEY, BOOK AND PAGE.
 - 438 O.R. 607 OFFICIAL RECORD, VOLUME AND PAGE.
 - O.S.E. OPEN SPACE EASEMENT.
 - P.U.E. PUBLIC UTILITY EASEMENT
 - D.E. DRAINAGE EASEMENT
- THE BASIS OF BEARINGS FOR THIS MAP IS THE WEST HALF OF THE SOUTH SECTION LINE OF SECTION 32, T. 22 N., R. 13 E., GIVEN AS N 89° 08' 48" E IN BOOK 5 OF RECORD OF SURVEYS AT PAGE 140, PLUMAS COUNTY RECORDS.
 - AN ADDITIONAL INFORMATION DOCUMENT IS BEING RECORDED CONCURRENTLY WITH THIS SUBDIVISION MAP IN BOOK 589 OF OFFICIAL RECORDS AT PAGE 697, PLUMAS COUNTY RECORDS.



WHITEHAWK RANCH
PHASE II
UNIT NO. 1
A PLANNED DEVELOPMENT

FOR
MOHAWK VALLEY RANCH, INC.
dba WHITEHAWK RANCH

WITHIN SECTIONS 31 AND 32
T. 22 N., R. 13 E., M.D.M
PLUMAS COUNTY, CALIFORNIA

PREPARED BY:

LARRY FITES ENGINEERING
P.O. BOX 20308
GRAEAGLE, CALIFORNIA 96103
R.C.E. 13225

SEPTEMBER 1992 SHEET 2 OF 2