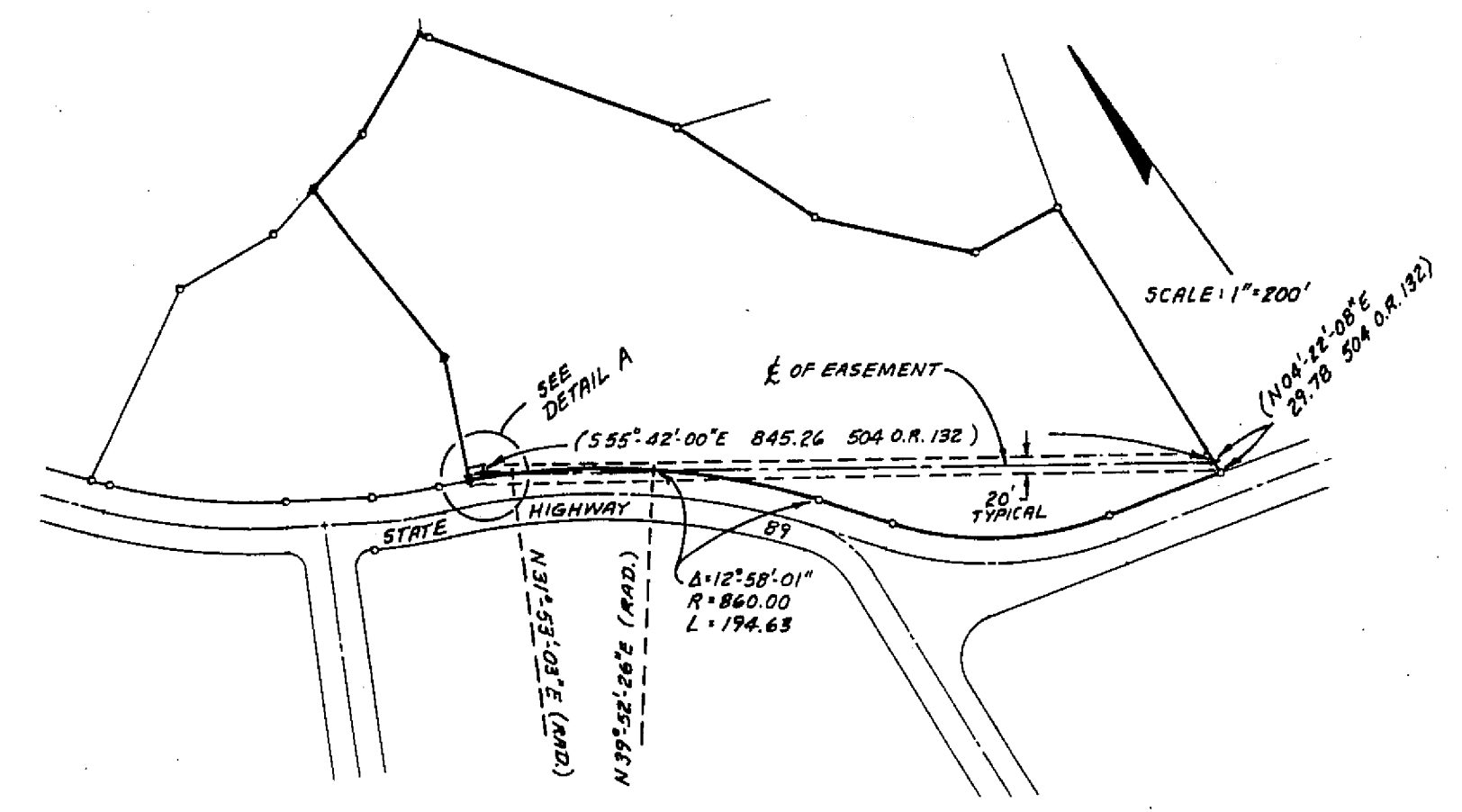
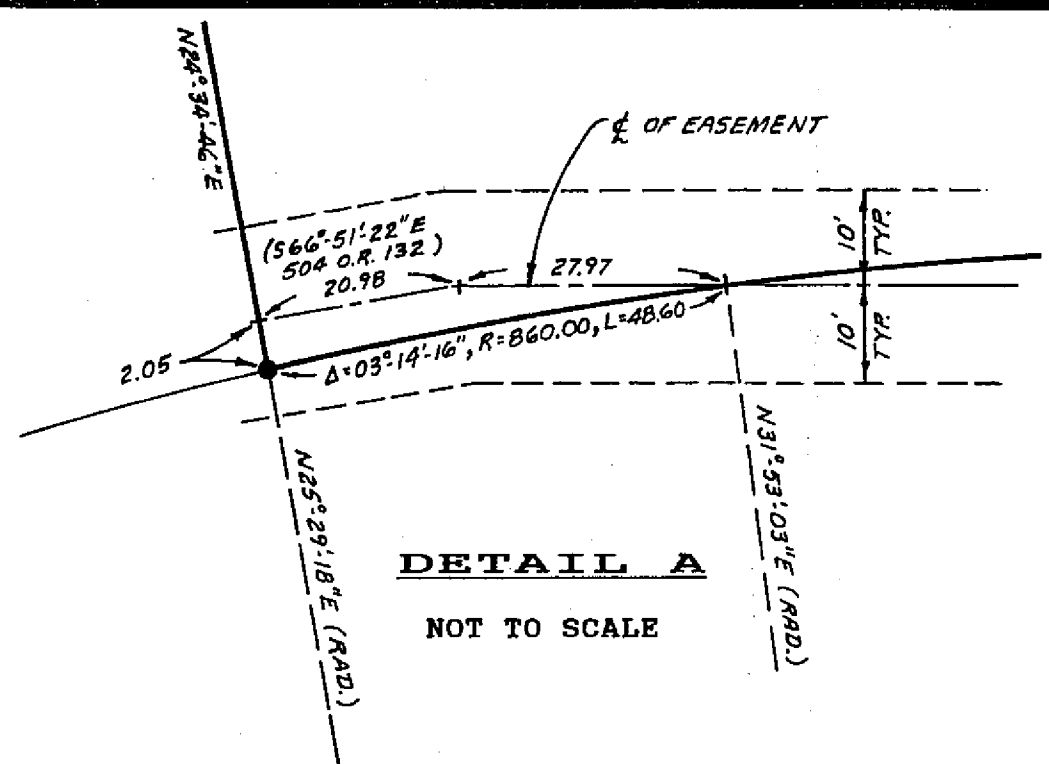


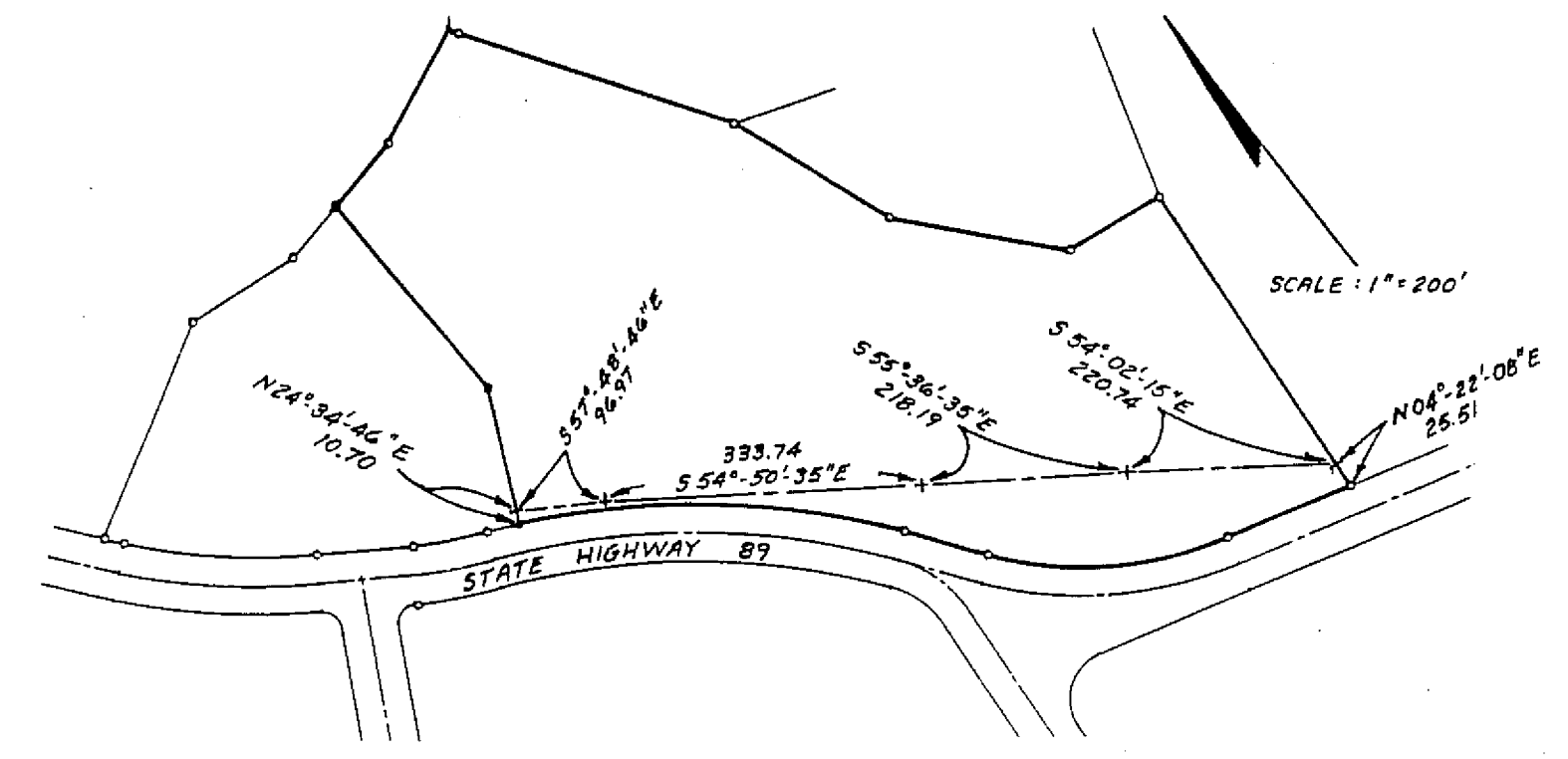
LEGEND

- FOUND 1/2" REBAR WITH PLASTIC CAP STAMPED R.C.E. 15265, NO RECORD REFERENCE, UNLESS OTHERWISE NOTED.
- FOUND 1/2" REBAR, NO CAP OR TAG. SET ALUMINUM CAP STAMPED R.C.E. 13225.
- SET 1/2" REBAR WITH ALUMINUM CAP STAMPED R.C.E. 13225.
- + CALCULATED POINT, NOTHING SET.
- () RECORD AND MEASURED DATA PER 4 M. 132 UNLESS OTHERWISE NOTED.
- [] RECORD AND MEASURED DATA PER A "PLAT OF PROPERTIES BELONGING TO GRAEAGLE LAND AND WATER COMPANY" AS PREPARED BY EUGENE B. LONGFIELD, L.S. 3536 IN APRIL 1971.
- (RAD.) RADIAL BEARING.
- 1 M. 23 RECORD MAP; BOOK AND PAGE.
- 1 O.R. 23 OFFICIAL RECORDS, BOOK AND PAGE.



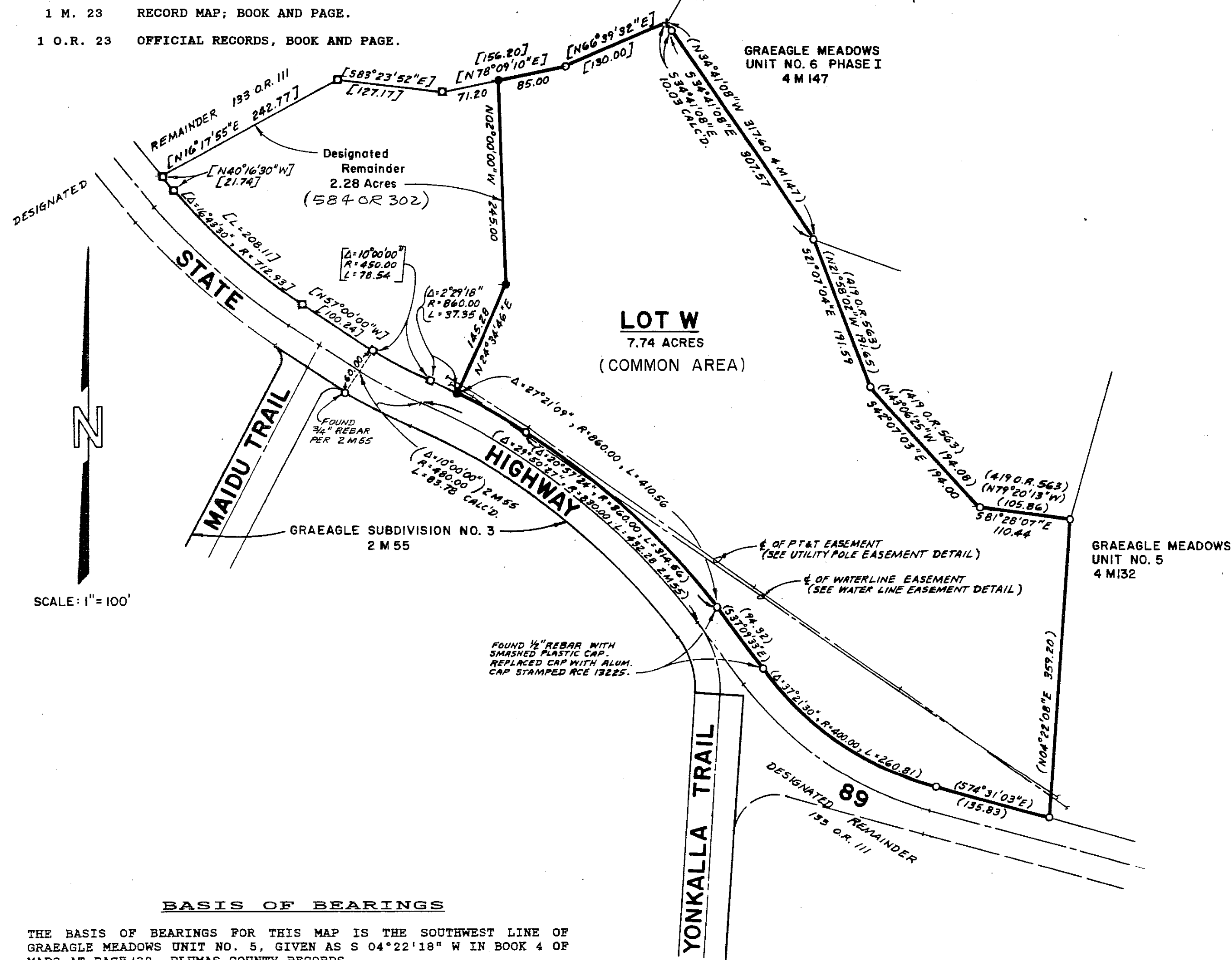
WATER LINE EASEMENT DETAIL

20' WIDE EASEMENT PER 504 O.R. 132



UTILITY POLE EASEMENT DETAIL

(THE LINE SHOWN HEREON IS THE CENTERLINE OF THE EXISTING POLE LINE. AN EASEMENT WIDTH WAS NOT A PART OF THE RECORDED EASEMENT.)



GRAEAGLE MEADOWS UNIT NO. 5 4 M 132

GRAEAGLE MEADOWS UNIT NO. 7 FOR CONDOMINIUM PURPOSES

A PORTION OF THE SW 1/4 OF THE SE 1/4 OF SECTION 15, T. 22 N., R. 12 E., M.D.M. PLUMAS COUNTY, CALIFORNIA

PREPARED BY
LARRY FITES ENGINEERING
 P.O. BOX 20308
 GRAEAGLE, CALIFORNIA 96103
 R.C.E. 13225

BASIS OF BEARINGS

THE BASIS OF BEARINGS FOR THIS MAP IS THE SOUTHWEST LINE OF GRAEAGLE MEADOWS UNIT NO. 5, GIVEN AS S 04°22'18" W IN BOOK 4 OF MAPS AT PAGE 132, PLUMAS COUNTY RECORDS.