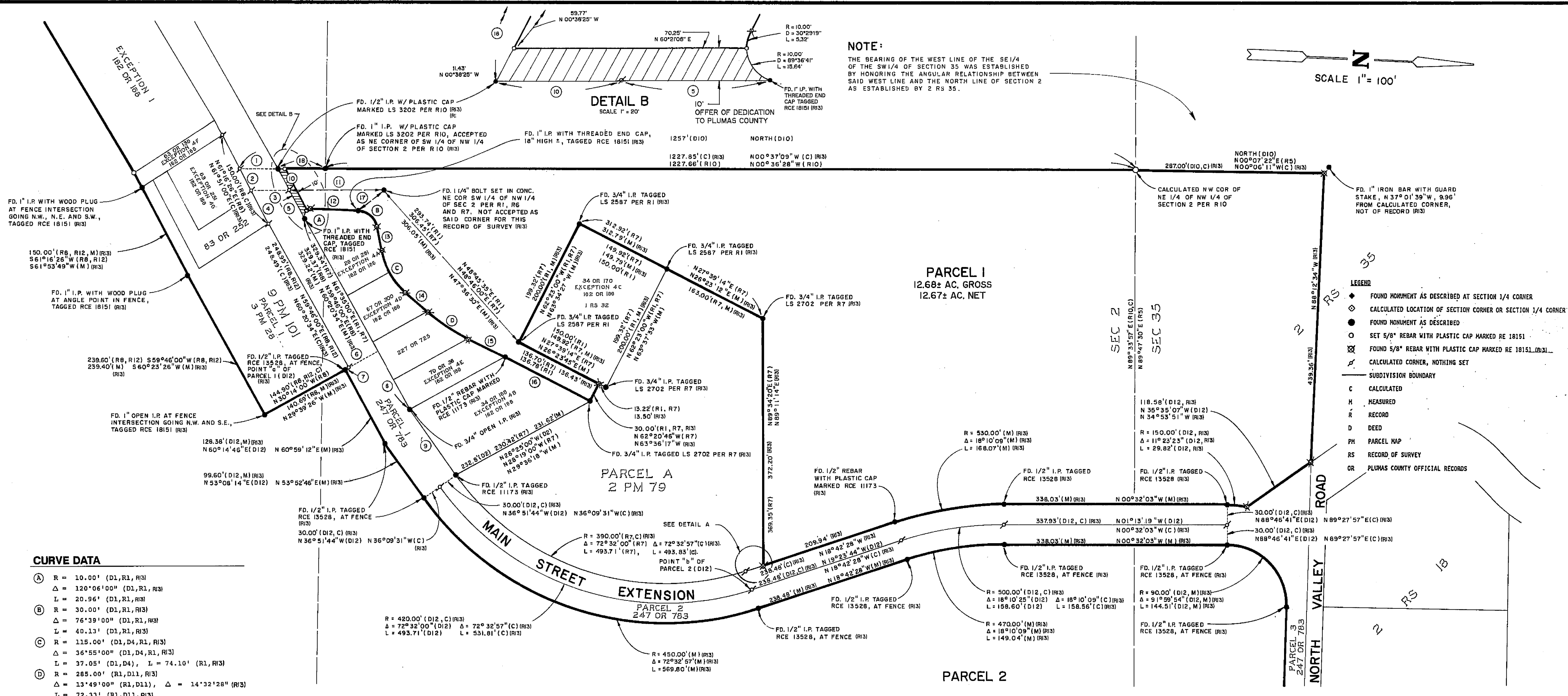
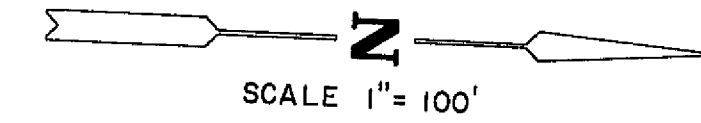


NOTE:
 THE BEARING OF THE WEST LINE OF THE SE 1/4 OF THE SW 1/4 OF SECTION 35 WAS ESTABLISHED BY HONORING THE ANGULAR RELATIONSHIP BETWEEN SAID WEST LINE AND THE NORTH LINE OF SECTION 2 AS ESTABLISHED BY 2 RS 35.

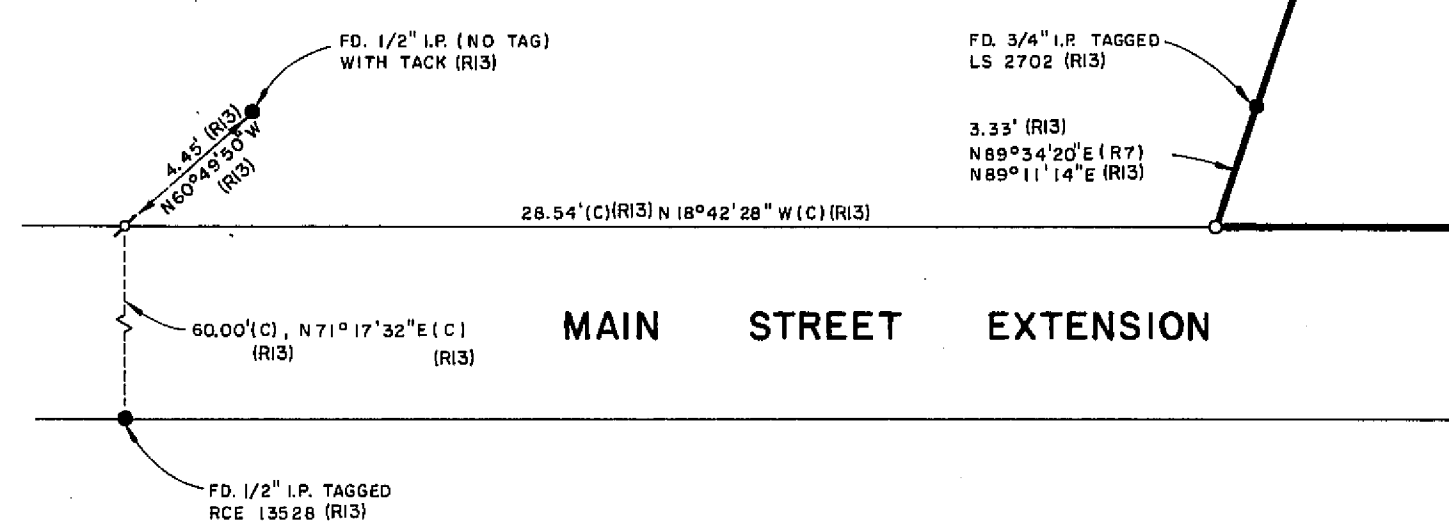


CURVE DATA

A	R = 10.00' (D1, R1, R3)
	Δ = 120°06'00" (D1, R1, R3)
	L = 20.96' (D1, R1, R3)
B	R = 30.00' (D1, R1, R3)
	Δ = 76°39'00" (D1, R1, R3)
	L = 40.13' (D1, R1, R3)
C	R = 115.00' (D1, D4, R1, R3)
	Δ = 36°55'00" (D1, D4, R1, R3)
	L = 37.05' (D1, D4), L = 74.10' (R1, R3)
D	R = 285.00' (R1, D11, R3)
	Δ = 13°49'00" (R1, D11), Δ = 14°32'28" (R3)
	L = 72.33' (R1, D11, R3)

LINE DATA

1	56.22' (C) (R3)	N 00°35'39" W (C) (R3)	11	144.34' (R1)	N 00°00'00" W (R1)
2	36.12' (C) (R3)	N 61°51'00" E (C) (R3)	12	144.87' (R8)	N 01°23'46" W (R8)
3	56.67' (R8, C) (R3)	N 01°23'46" W (R8)	13	144.20' (R10)	N 00°36'00" W (R10)
4	56.97' (R8, C) (R3)	N 00°49'12" W (C) (R3)	14	144.13' (C) (R3)	N 00°36'42" W (C) (R3)
5	49.12' (R8, C) (R3)	N 61°16'26" E (R8)	15	72.54' (D1, R1, R3)	N 01°42'00" E (D1, R1)
6	51.58' (R8, D12, C) (R3)	N 61°51'00" E (C) (R3)	16	36.83' (D1, R1, R3)	N 00°51'32" E (R3)
7	4.21' (D12, C) (R3)	N 60°16'58" E (R8)	17	46.84' (R1, D4)	N 78°21'00" E (D1, R1)
8	100.03' (D12)	N 60°51'32" E (C) (R3)	18	46.91' (R3)	N 77°30'32" E (R3)
9	100.72' (C) (R3)	N 30°14'00" W (R8)	19	60.30' (R1, D5)	N 41°25'00" E (R1)
10	120.80' (D2, R7)	N 29°45'14" W (D12)	20	61.05' (R3)	N 41°26'00" E (R3)
	120.73' (D12)	N 29°39'26" W (C) (R3)		144.70' (D2)	N 40°35'32" E (C)
	120.64' (M) (R3)	N 59°34'15" E (D12)		144.02' (M) (R3)	N 27°37'00" E (R1, D5)
	36.68' (R10)	N 60°20'34" E (C) (R3)		49.13' (D1, R1, D11)	N 26°03'01" E (R3)
	36.61' (C) (R3)	N 54°48'00" E (D2, R7)		49.44' (M) (R3)	N 27°37'00" E (R1, D2)
		N 53°08'16" E (D12)		71.20' (R10, M) (R3)	N 26°23'42" E (M) (R3)
		N 53°52'10" E (M) (R3)			N 37°08'00" W (D1, R1, D11)
		N 59°46'48" E (R10)			S 38°17'54" W (C) (R3)
		N 59°40'22" E (C) (R3)			N 00°36'28" W (R10)
					N 00°38'25" W (M) (R3)



DETAIL A
 SCALE 1"=5'

HOLLINGSWORTH ESTATES
SUBDIVISION MAP

A PORTION OF SECTION 2, T.26N., R.9E.
 AND SECTION 35, T.27N., R.9E., M.D.B. & M.
 PLUMAS COUNTY, CALIFORNIA

FOR
 THE ESTATE OF HELEN HOLLINGSWORTH PER SUPERIOR
 COURT OF CALIFORNIA, BUTTE COUNTY NO. 27288

ROIS, ANDERSON & ROIS
 CIVIL ENGINEERS
 965 FIR STREET
 CHICO, CALIFORNIA 95928