

PARCEL 2

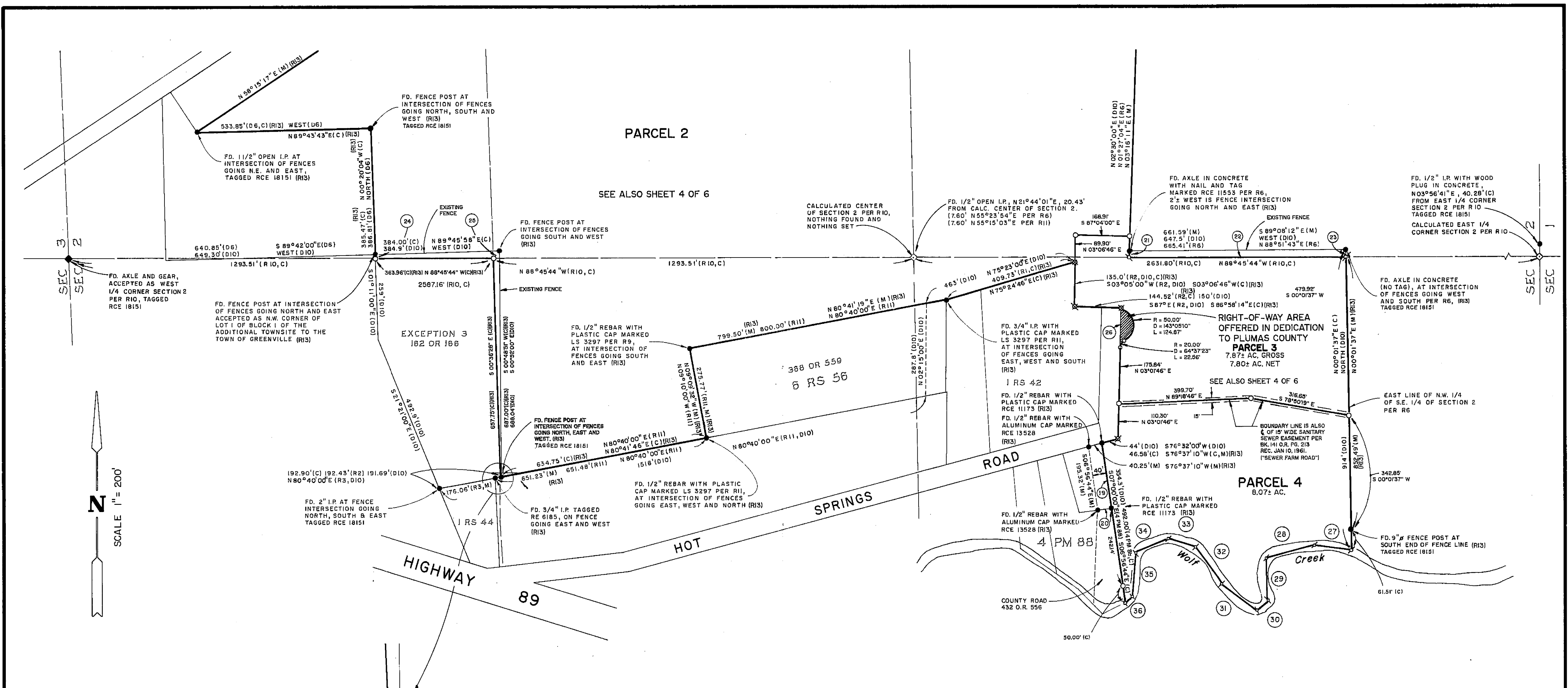
SEE ALSO SHEET 4 OF 6

# HOLLINGSWORTH ESTATES SUBDIVISION MAP

A PORTION OF SECTION 2, T.26N., R.9E.  
AND SECTION 35, T.27N., R.9E., M.D.B. & M.  
PLUMAS COUNTY, CALIFORNIA

FOR  
THE ESTATE OF HELEN HOLLINGSWORTH PER SUPERIOR  
COURT OF CALIFORNIA, BUTTE COUNTY NO. 27288

**ROLLS, Anderson & ROLL**  
CIVIL ENGINEERS  
965 FIR STREET  
CHICO, CALIFORNIA 95928



- LEGEND**
- ◆ FOUND MONUMENT AS DESCRIBED AT SECTION 1/4 CORNER
  - ◇ CALCULATED LOCATION OF SECTION CORNER OR SECTION 1/4 CORNER
  - FOUND MONUMENT AS DESCRIBED
  - SET 5/8" REBAR WITH PLASTIC CAP MARKED RE 18151
  - ⊗ FOUND 5/8" REBAR WITH PLASTIC CAP MARKED RE 18151, (R13)
  - CALCULATED CORNER, NOTHING SET
  - SUBDIVISION BOUNDARY
  - C CALCULATED
  - M MEASURED
  - R RECORD
  - D DEED
  - PM PARCEL MAP
  - RS RECORD OF SURVEY
  - OR PLUMAS COUNTY OFFICIAL RECORDS

**LINE DATA**

19	199.86' (M)(R13)	S 06°56'44" E (M)(R13)
20	40.00' (M)(R13)	N 83°05'50" E (M)(R13)
21	25.40' (C)(R13)	N 03°16'11" E (C)(R13)
22	663.10' (C)(R13)	N 88°45'44" W (C)(R13)
23	29.72' (C)(R13)	N 00°01'37" E (C)(R13)
24	20.32' (C)(R13)	N 00°20'04" W (C)(R13)
25	35.85' (C)(R13)	N 33°55'00" E (C)(R13)
26	112.23'	N 03°01'46" E
27	115.00' (C)	N 81°20'00" W (C)
28	155.00' (C)	S 76°00'00" W (C)
29	130.00' (C)	S 02°20'00" E (C)
30	45.00' (C)	S 50°00'00" W (C)
31	140.00' (C)	N 52°00'00" W (C)
32	140.00' (C)	N 31°00'00" W (C)
33	90.00' (C)	N 73°20'00" W (C)
34	110.00' (C)	S 69°10'00" W (C)
35	140.00' (C)	S 05°00'00" W (C)
36	33.79' (C)	S 47°23'04" W (C)

