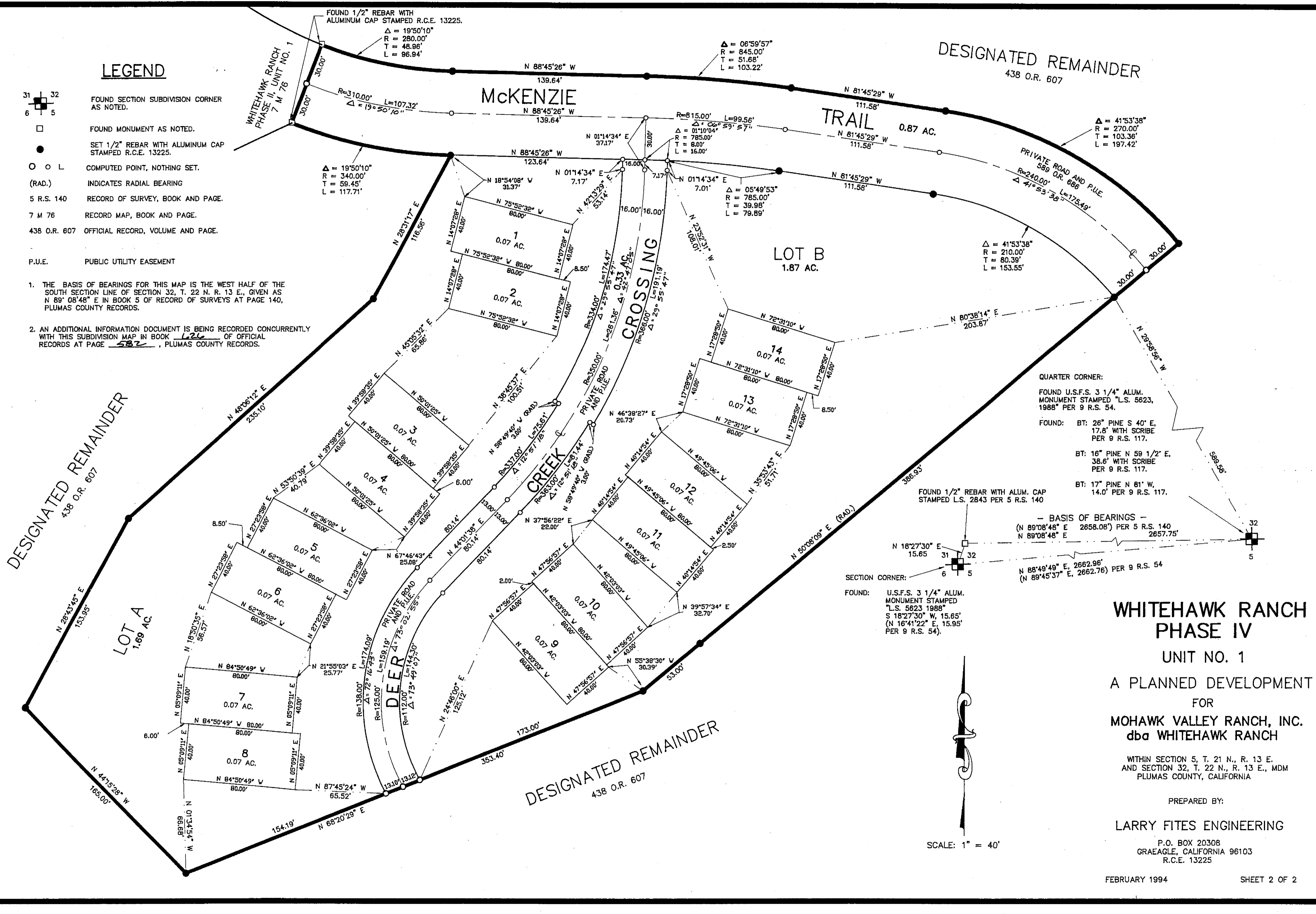


LEGEND

- 31 32
6 5
- FOUND SECTION SUBDIVISION CORNER AS NOTED.
- FOUND MONUMENT AS NOTED.
- SET 1/2" REBAR WITH ALUMINUM CAP STAMPED R.C.E. 13225.
- COMPUTED POINT, NOTHING SET.
- (RAD.) INDICATES RADIAL BEARING
- 5 R.S. 140 RECORD OF SURVEY, BOOK AND PAGE.
- 7 M 76 RECORD MAP, BOOK AND PAGE.
- 438 O.R. 607 OFFICIAL RECORD, VOLUME AND PAGE.
- P.U.E. PUBLIC UTILITY EASEMENT

1. THE BASIS OF BEARINGS FOR THIS MAP IS THE WEST HALF OF THE SOUTH SECTION LINE OF SECTION 32, T. 22 N. R. 13 E., GIVEN AS N 89° 08' 48" E IN BOOK 5 OF RECORD OF SURVEYS AT PAGE 140, PLUMAS COUNTY RECORDS.
2. AN ADDITIONAL INFORMATION DOCUMENT IS BEING RECORDED CONCURRENTLY WITH THIS SUBDIVISION MAP IN BOOK 1226 OF OFFICIAL RECORDS AT PAGE 582, PLUMAS COUNTY RECORDS.



QUARTER CORNER:
 FOUND U.S.F.S. 3 1/4" ALUM. MONUMENT STAMPED "L.S. 5623, 1988" PER 9 R.S. 54.
 FOUND: BT: 26" PINE S 40° E, 17.8' WITH SCRIBE PER 9 R.S. 117.
 BT: 16" PINE N 59 1/2° E, 38.6' WITH SCRIBE PER 9 R.S. 117.
 BT: 17" PINE N 81° W, 14.0' PER 9 R.S. 117.

SECTION CORNER:
 FOUND: U.S.F.S. 3 1/4" ALUM. MONUMENT STAMPED "L.S. 5623 1988" S 18°27'30" W, 15.65' (N 16°41'22" E, 15.95' PER 9 R.S. 54).
 FOUND 1/2" REBAR WITH ALUM. CAP STAMPED L.S. 2843 PER 5 R.S. 140
 FOUND 1/2" REBAR WITH ALUM. CAP STAMPED L.S. 2843 PER 5 R.S. 140

**WHITEHAWK RANCH
 PHASE IV
 UNIT NO. 1**
 A PLANNED DEVELOPMENT
 FOR
**MOHAWK VALLEY RANCH, INC.
 dba WHITEHAWK RANCH**

WITHIN SECTION 5, T. 21 N., R. 13 E.
 AND SECTION 32, T. 22 N., R. 13 E., MDM
 PLUMAS COUNTY, CALIFORNIA

PREPARED BY:
LARRY FITES ENGINEERING
 P.O. BOX 20308
 GRAEAGLE, CALIFORNIA 96103
 R.C.E. 13225

SCALE: 1" = 40'