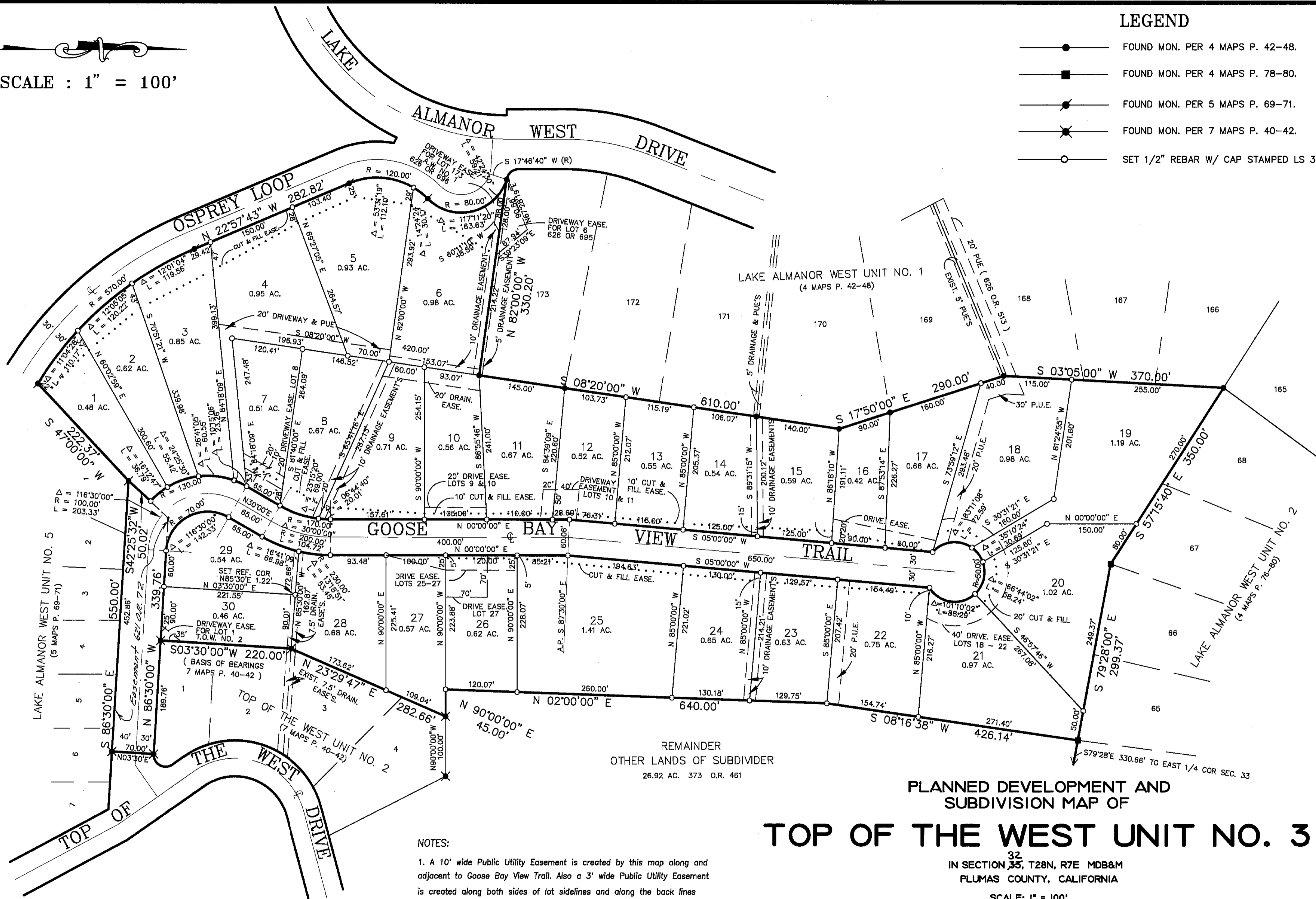


LEGEND

- FOUND MON. PER 4 MAPS P. 42-48.
- FOUND MON. PER 4 MAPS P. 78-80.
- /— FOUND MON. PER 5 MAPS P. 69-71.
- X— FOUND MON. PER 7 MAPS P. 40-42.
- SET 1/2" REBAR W/ CAP STAMPED LS 3989.

SCALE : 1" = 100'



NOTES:

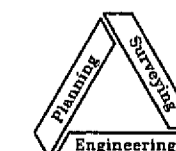
1. A 10' wide Public Utility Easement is created by this map along and adjacent to Goose Bay View Trail. Also a 3' wide Public Utility Easement is created along both sides of lot sidelines and along the back lines of all lots.

PLANNED DEVELOPMENT AND
SUBDIVISION MAP OF
TOP OF THE WEST UNIT NO. 3

IN SECTION 32, T28N, R7E MDB&M
PLUMAS COUNTY, CALIFORNIA

SCALE: 1" = 100'

NST Engineering, Inc.
1495 Riverside Drive
Susanville, CA 96130
(916) 257-5173



SHEET 2 OF 3

79-94
CERTIFICATE OF CORRECTION
636 OR 242

7 M 107