

LEGEND

- 31.32  
8 15 FOUND SECTION SUBDIVISION CORNER AS NOTED.
- FOUND MONUMENT PER PHASE V UNIT NO. 1 EXCEPT AS OTHERWISE NOTED.
- SET 1/2" REBAR WITH ALUMINUM CAP STAMPED R.C.E. 13225.
- COMPUTED POINT, NOTHING SET.
- 5 R.S. 140 RECORD OF SURVEY, BOOK AND PAGE.
- 438 O.R. 607 OFFICIAL RECORD, VOLUME AND PAGE.
- P.U.E. PUBLIC UTILITY EASEMENT
- O.S.E. OPEN SPACE EASEMENT.
- (RAD.) INDICATES RADIAL BEARING.
- R1 INDICATES RECORD DATA PER 521 O.R. 241
- R2 INDICATES RECORD DATA PER 589 O.R. 686

1. THE BASIS OF BEARINGS FOR THIS MAP IS THE WEST HALF OF THE SOUTH SECTION LINE OF SECTION 32, T. 22 N. R. 13 E., GIVEN AS N 89° 08' 48" E IN BOOK 5 OF RECORD OF SURVEYS AT PAGE 140, PLUMAS COUNTY RECORDS.
2. AN ADDITIONAL INFORMATION DOCUMENT IS BEING RECORDED CONCURRENTLY WITH THIS SUBDIVISION MAP IN BOOK 640 OF OFFICIAL RECORDS AT PAGE 682, PLUMAS COUNTY RECORDS.

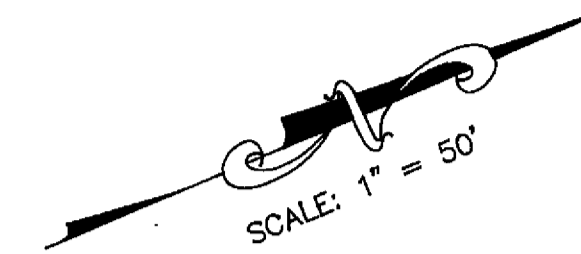
TANGENT TABLE

LINE	DIRECTION	DISTANCE
1	S 62°35'45" E (RAD.)	30.00'
2	S 62°35'45" E (RAD.)	3.54'
3	N 55°18'24" W (RAD.)	30.00'
4	N 55°18'24" W (RAD.)	30.00'
5	S 22°45'00" W	20.84'
6	N 19°30'17" W	30.00'
7	S 19°13'17" E	20.00'
8	N 19°30'17" W	13.40'
9	N 19°30'17" W	13.40'
10	N 70°29'43" E	13.00'
11	N 70°29'43" E	13.00'
12	S 02°07'34" E (RAD.)	30.00'
13	S 02°07'34" E (RAD.)	30.00'
14	S 25°30'55" E	13.00'
15	S 25°30'55" E	13.00'
16	N 25°30'55" W	6.40'
17	N 01°14'18" E	30.00'
18	N 01°14'18" E	30.00'
19	N 24°44'03" W	23.41'
20	N 89°08'59" E	23.14'
21	N 73°13'26" W	35.66'
22	S 26°22'55" W	6.48'
23	N 70°52'36" E	11.41'
24	N 60°49'31" E	7.67'
25	S 49°55'35" E	18.14'
26	S 11°06'18" W	15.07'
27	N 14°22'20" W	19.73'

SECTION CORNER:  
FOUND: U.S.F.S. 3 1/4" ALUM. MONUMENT STAMPED "L.S. 5623 1988" S 18°27'30" W, 15.65' (N 16°41'22" E, 15.95') PER 9 R.S. 54

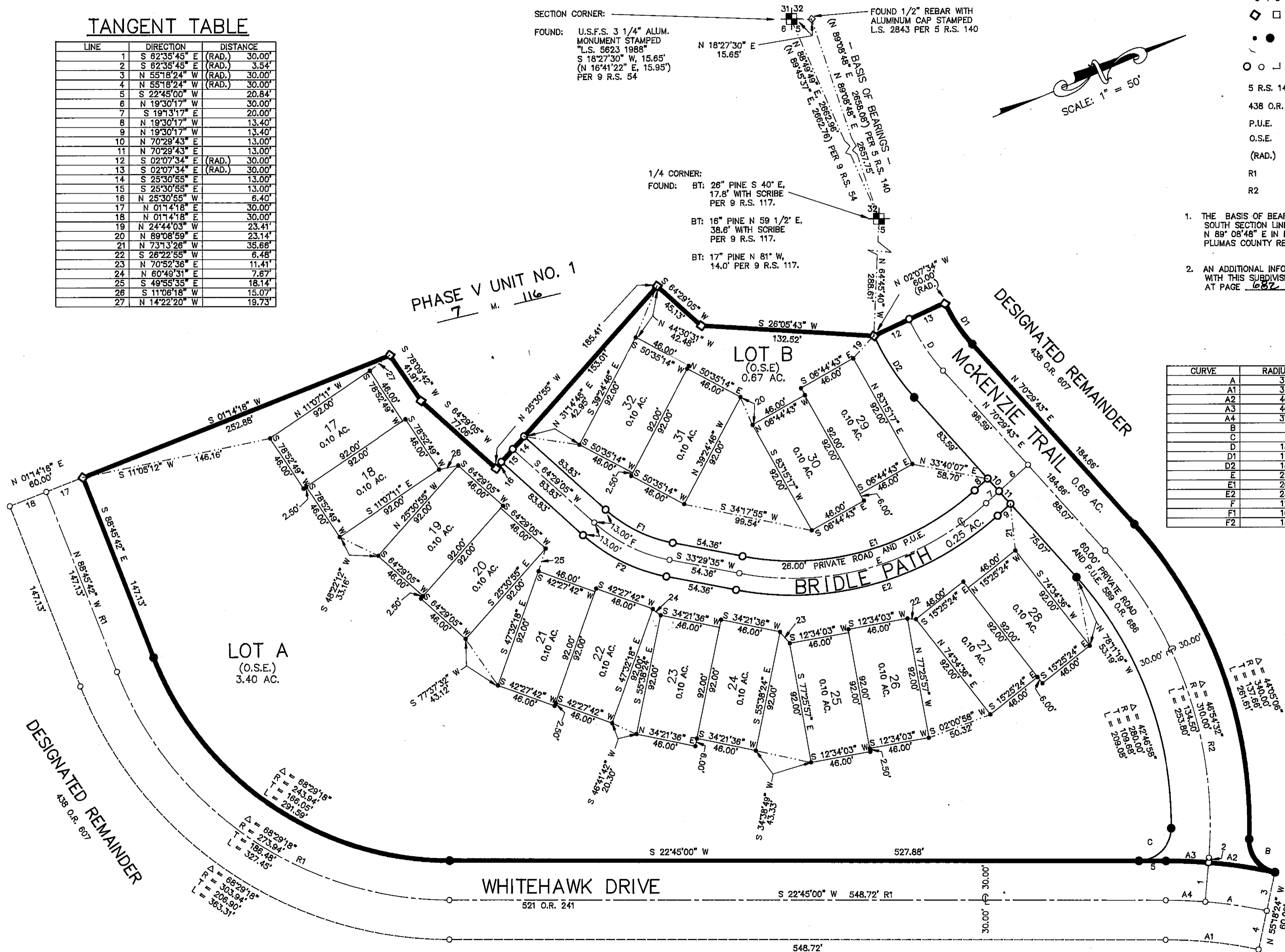
FOUND 1/2" REBAR WITH ALUMINUM CAP STAMPED L.S. 2843 PER 5 R.S. 140

1/4 CORNER:  
FOUND: BT: 26" PINE S 40° E, 17.8' WITH SCRIBE PER 9 R.S. 117.  
BT: 16" PINE N 59 1/2° E, 38.6' WITH SCRIBE PER 9 R.S. 117.  
BT: 17" PINE N 81° W, 14.0' PER 9 R.S. 117.



CURVE TABLE

CURVE	RADIUS	LENGTH	TANGENT	DELTA
A	375.00'	47.71'	23.89'	071°17'21"
A1	345.00'	71.91'	36.09'	115°56'36"
A2	405.00'	51.52'	25.80'	071°17'21"
A3	405.00'	32.90'	16.46'	04°39'15"
A4	375.00'	30.46'	15.24'	04°39'15"
B	25.00'	34.86'	20.94'	79°53'13"
C	25.00'	39.04'	24.77'	89°28'20"
D	155.00'	47.01'	23.68'	172°24'43"
D1	125.00'	37.91'	19.10'	172°24'43"
D2	185.00'	56.11'	28.27'	172°24'43"
E	220.00'	203.50'	109.68'	52°59'53"
E1	207.00'	191.47'	103.20'	52°59'53"
E2	233.00'	215.52'	116.16'	52°59'53"
F	120.00'	64.91'	33.27'	30°59'30"
F1	107.00'	57.88'	29.67'	30°59'30"
F2	133.00'	71.94'	36.87'	30°59'30"



WHITEHAWK RANCH  
PHASE V  
UNIT NO. 2  
A PLANNED DEVELOPMENT  
FOR  
MOHAWK VALLEY RANCH, INC.  
dba WHITEHAWK RANCH

WITHIN SECTION 5, T. 21 N., R. 13 E.,  
AND SECTION 32, T. 22 N., R. 13 E., MDM  
PLUMAS COUNTY, CALIFORNIA

PREPARED BY:

LARRY FITES ENGINEERING

P.O. BOX 20308  
GRAEAGLE, CALIFORNIA 96103  
R.C.E. 13225

AUGUST 1994

SHEET 2 OF 2