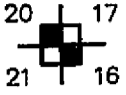


**LEGEND**

SECTION CORNER:  
FOUND 1/2" REBAR  
WITH PLASTIC CAP  
STAMPED R.C.E. 15265  
PER 5 R.S. 47



FOUND SECTION SUBDIVISION CORNER  
AS NOTED.

FOUND 1/2" REBAR WITH PLASTIC  
CAP STAMPED R.C.E. 15265  
UNLESS OTHERWISE NOTED.

FOUND 1/2" REBAR WITH ALUMIN.  
CAP STAMPED R.C.E. 13225.

SET 1/2" REBAR WITH ALUMINUM CAP  
STAMPED R.C.E. 13225.

COMPUTED POINT, NOTHING SET.

5 R.S. 47 RECORD OF SURVEY, BOOK AND PAGE.

616 O.R. 421 OFFICIAL RECORD, VOLUME AND PAGE.

7 M. 67 RECORD MAP, BOOK AND PAGE.

U.E. UTILITY EASEMENT.

( ) RECORD DATA AS NOTED.

R1 & M RECORD AND MEASURED PER 7 M. 67

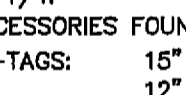
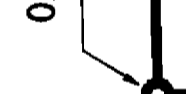
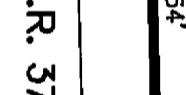
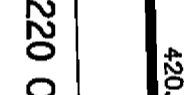
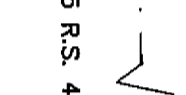
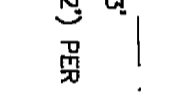
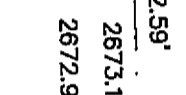
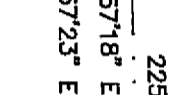
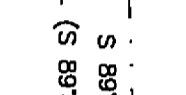
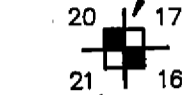
R2 RECORD PER 616 O.R. 421

1. THE BASIS OF BEARINGS FOR THIS MAP IS  
THE SOUTH CENTER SECTION LINE OF SECTION 16,  
T. 22 N., R. 12 E. GIVEN AS N 00° 01' 07" W IN  
BOOK 5 OF RECORD OF SURVEYS AT PAGE 47,  
PLUMAS COUNTY RECORDS.

2. THE NORTH BOUNDARY OF LOT 3 IS THE  
THREAD OF SMITH CREEK PER 616 O.R. 421

NO ACCESSORIES FOUND.  
SET K-TAGS:

- 20" PINE N 56° W, 28.9'
- 14" PINE N 56° E, 16.9'
- 28" PINE S 60° E, 32.5'
- 15" CEDAR S 30° W, 34.4'

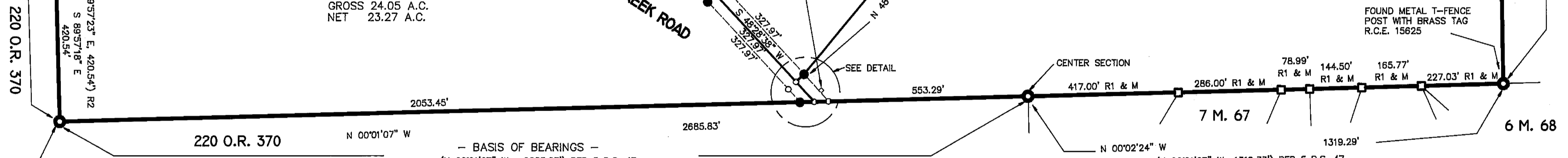
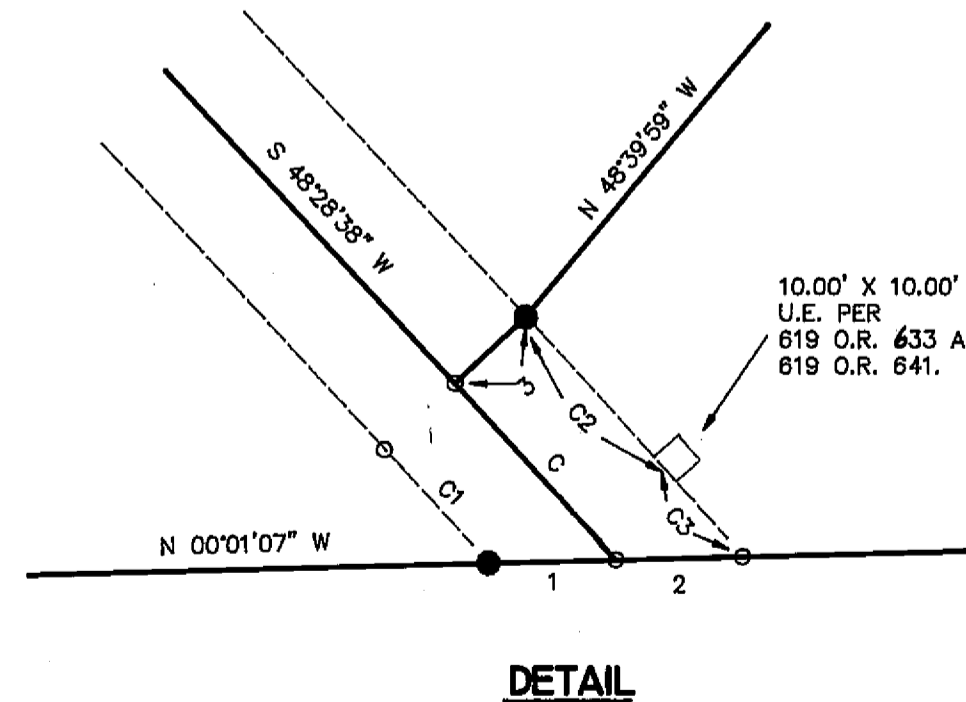


**CURVE TABLE**

CURVE	RADIUS	LENGTH	TANGENT	DELTA
A	200.00'	108.69'	55.72'	31°08'15"
A1	170.00'	106.34'	54.98'	35°50'29"
A2	230.00'	133.33'	68.60'	33°12'50"
B	700.00'	232.18'	117.17'	19°00'16"
B1	730.00'	79.95'	40.02'	08°16'32"
B2	670.00'	222.23'	112.15'	19°00'16"
B3	730.00'	162.18'	81.43'	12°43'45"
C	5000.00'	73.93'	36.97'	00°50'50"
C1	4970.00'	47.66'	23.83'	00°32'58"
C2	5030.00'	63.93'	31.96'	00°43'41"
C3	5030.00'	36.16'	18.08'	00°24'43"
D	250.00'	60.97'	30.64'	13°58'27"
D1	280.00'	68.29'	34.32'	13°58'27"
D2	220.00'	53.66'	26.96'	13°58'27"

**TANGENT TABLE**

LINE	DIRECTION	DISTANCE
1	N 00°01'07" W	39.63'
2	N 00°01'07" W	39.46'
3	N 41°31'22" W	30.00'
4	N 13°47'30" W	30.99'
5	N 53°54'09" W	33.60'
6	N 89°28'03" W	43.51'
7	N 89°28'03" W	43.51'
8	N 00°09'25" W	34.28'
9	N 00°09'25" W	34.28'
10	N 46°56'16" E	150.22'



**SMITH CREEK RANCH**

A PLANNED DEVELOPMENT

FOR

**FLANAGAN FAMILY TRUST**

A PORTION OF THE WEST HALF OF  
SECTION 16, T. 22 N., R. 13 E., M.D.M.  
PLUMAS COUNTY, CALIFORNIA.

PREPARED BY:

**LARRY FITES ENGINEERING**

P.O. BOX 20308  
GRAEAGLE, CALIFORNIA 96103  
R.C.E. 13225

AUGUST 1994

SHEET 2 OF 3