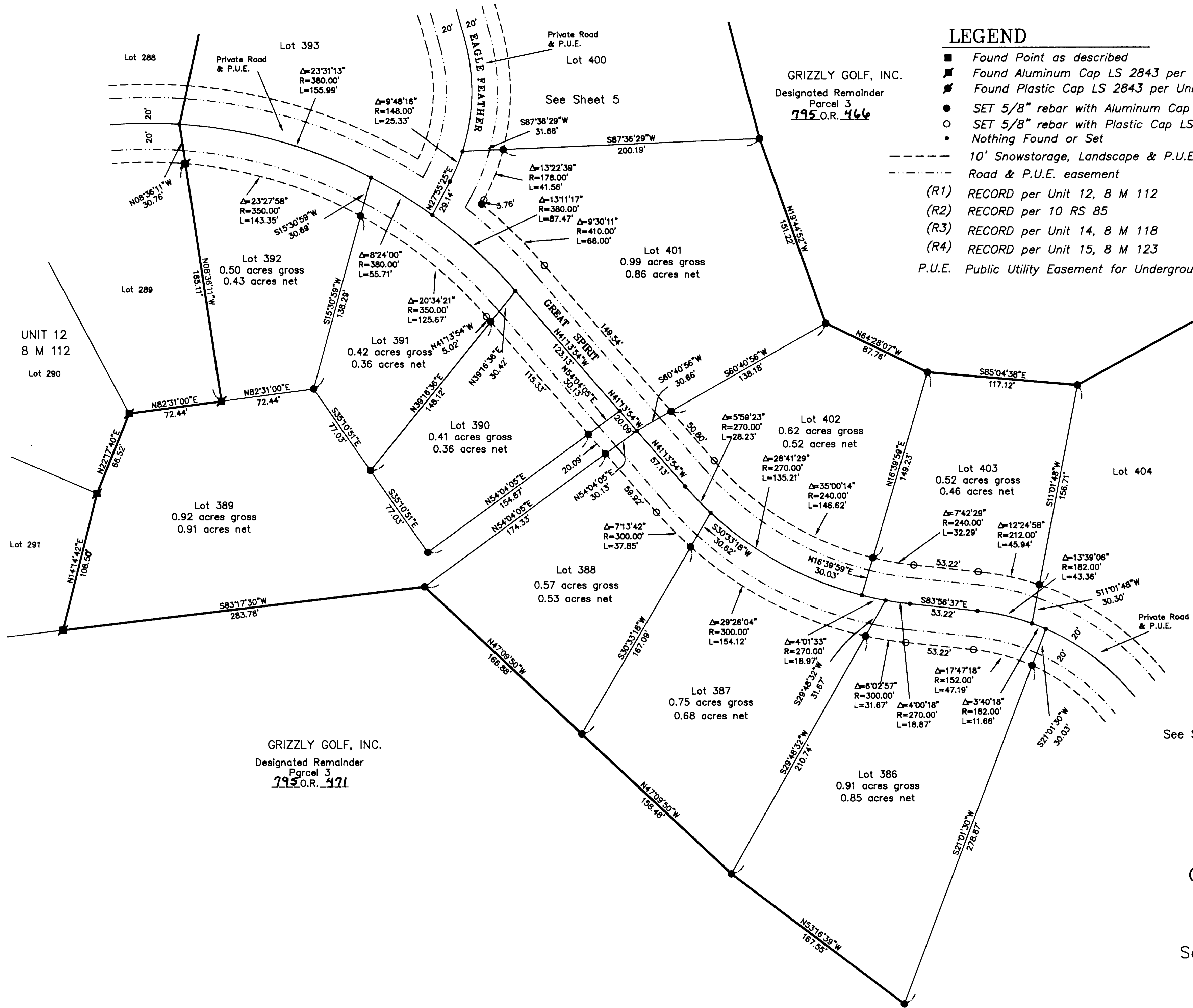
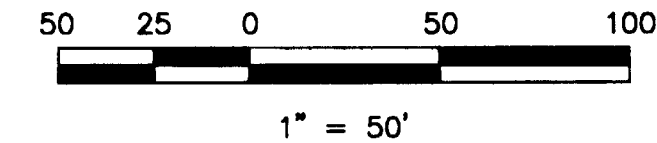


LEGEND

- Found Point as described
- Found Aluminum Cap LS 2843 per Unit 12, 8 M 112
- Found Plastic Cap LS 2843 per Unit 12, 8 M 112
- SET 5/8" rebar with Aluminum Cap LS 2843
- SET 5/8" rebar with Plastic Cap LS 2843
- Nothing Found or Set
- - - 10' Snowstorage, Landscape & P.U.E. easement
- · - - Road & P.U.E. easement
- (R1) RECORD per Unit 12, 8 M 112
- (R2) RECORD per 10 RS 85
- (R3) RECORD per Unit 14, 8 M 118
- (R4) RECORD per Unit 15, 8 M 123
- P.U.E. Public Utility Easement for Underground Utilities



GOLD MOUNTAIN  
 UNIT 16 "EAGLE FEATHER"  
 a Planned Development  
 for  
 Gold Mountain Ranch, Inc.  
 A Portion of Section 16  
 T. 22 N., R 13 E.; M.D.M.  
 Plumas County, California  
 Scale 1" = 50' September, 1999

Hamby Surveying Inc.  
 P.O. Box 1209  
 Portola, CA 96122  
 (530) 832-5571