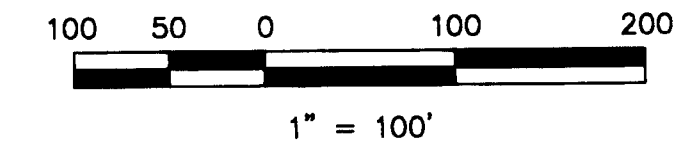
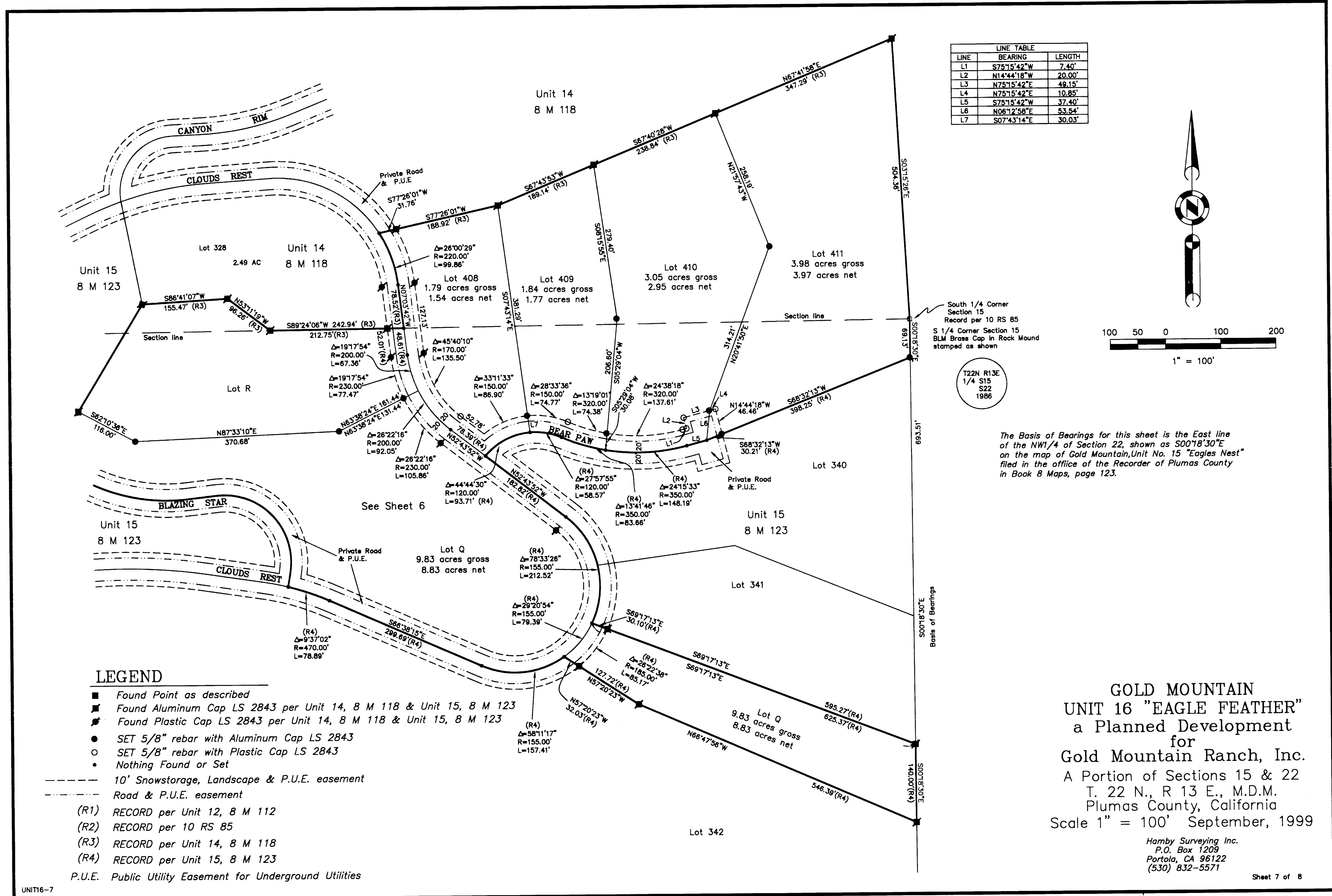


LINE	BEARING	LENGTH
L1	S75°15'42"W	7.40'
L2	N14°44'18"W	20.00'
L3	N75°15'42"E	49.15'
L4	N75°15'42"E	10.85'
L5	S75°15'42"W	37.40'
L6	N06°12'58"E	53.54'
L7	S07°43'14"E	30.03'



T22N R13E
1/4 S15
S22
1986

The Basis of Bearings for this sheet is the East line of the NW1/4 of Section 22, shown as S00°18'30"E on the map of Gold Mountain, Unit No. 15 "Eagles Nest" filed in the office of the Recorder of Plumas County in Book 8 Maps, page 123.



LEGEND

- Found Point as described
- ▲ Found Aluminum Cap LS 2843 per Unit 14, 8 M 118 & Unit 15, 8 M 123
- ◆ Found Plastic Cap LS 2843 per Unit 14, 8 M 118 & Unit 15, 8 M 123
- SET 5/8" rebar with Aluminum Cap LS 2843
- SET 5/8" rebar with Plastic Cap LS 2843
- Nothing Found or Set
- 10' Snowstorage, Landscape & P.U.E. easement
- - - - Road & P.U.E. easement
- (R1) RECORD per Unit 12, 8 M 112
- (R2) RECORD per 10 RS 85
- (R3) RECORD per Unit 14, 8 M 118
- (R4) RECORD per Unit 15, 8 M 123
- P.U.E. Public Utility Easement for Underground Utilities

**GOLD MOUNTAIN
UNIT 16 "EAGLE FEATHER"
a Planned Development
for
Gold Mountain Ranch, Inc.
A Portion of Sections 15 & 22
T. 22 N., R 13 E., M.D.M.
Plumas County, California
Scale 1" = 100' September, 1999**

Hamby Surveying Inc.
P.O. Box 1209
Portola, CA 96122
(530) 832-5571