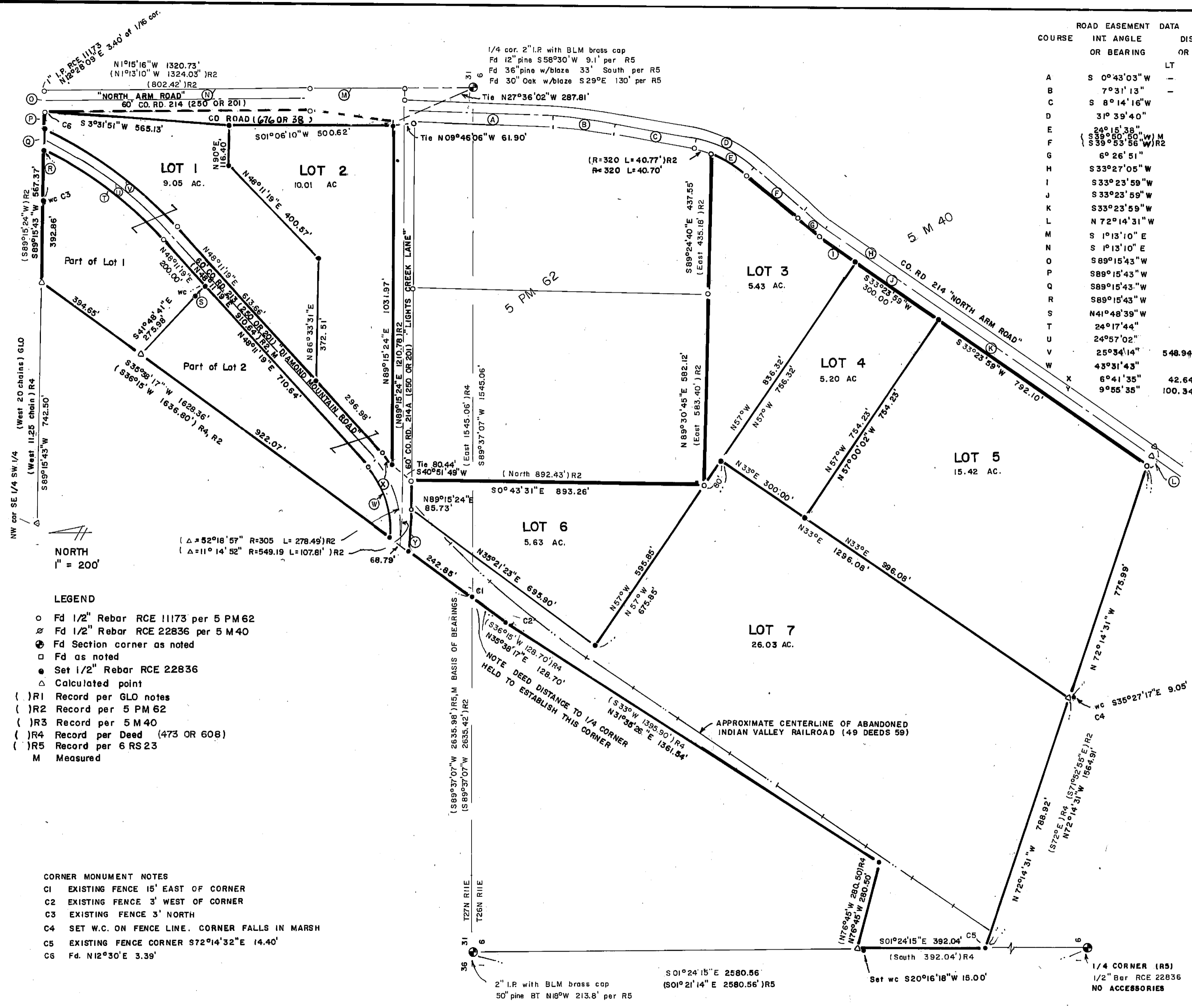


COURSE	INT ANGLE OR BEARING	DISTANCE		RADIUS		
		OR ARC LENGTH	CL	RT	CL	
A	S 0°43'03"W	-	463.11	432.34'	-	(R2)
B	7°31'13"	-	183.76	179.82'	-	1400 1370 (R2)
C	S 8°14'16"W	-	257.82	257.82'	-	(R2)
D	31°39'40"	-	193.41	176.83	350	320 (R2)
E	24°15'38"	-	-	135.50'	-	(M)
F	(S 33°50'50"W) M	-	210.00	210.00	-	(R2, M)
G	6°26'51"	-	73.14	76.52	650	680 (R2, M)
H	S 33°27'05"W	-	1298.49	-	-	(R2)
I	S 33°23'59"W	-	136.96	136.96	-	(M)
J	S 33°23'59"W	-	-	300.00	-	(M)
K	S 33°23'59"W	-	-	792.10	-	(M)
L	N 72°14'31"W	-	-	62.23'	-	(M)
M	S 1°13'10"E	-	-	294.25'	-	(R2)
N	S 1°13'10"E	-	-	802.42	-	(R2)
O	S 89°15'43"W	-	60.00	-	-	(M)
P	S 89°15'43"W	-	48.84	-	-	(M)
Q	S 89°15'43"W	-	65.67	-	-	(M)
R	S 89°15'43"W	-	154.82	-	-	(M)
S	N 41°48'39"W	-	39.73	-	-	(M)
T	24°17'44"	-	-	496.42	-	(M)
U	24°57'02"	-	522.56	-	-	(R2, M)
V	25°34'14"	548.94	-	-	1230	1200 (R2, M)
W	43°31'43"	-	206.92	-	-	(M)
X	6°41'35"	42.64	-	-	365	275 (M)
Y	9°55'35"	100.34	-	-	579.19	(M)

SET WITNESS CORNER ON TOP BANK  
SET WITNESS CORNER ON TOP BANK

TOTAL AREA OF DIVISION 76.77 AC.



- LEGEND**
- Fd 1/2" Rebar RCE 11173 per 5 PM 62
  - ⊙ Fd 1/2" Rebar RCE 22836 per 5 M 40
  - ⊕ Fd Section corner as noted
  - Fd as noted
  - Set 1/2" Rebar RCE 22836
  - △ Calculated point
  - ( ) R1 Record per GLO notes
  - ( ) R2 Record per 5 PM 62
  - ( ) R3 Record per 5 M 40
  - ( ) R4 Record per Deed (473 OR 608)
  - ( ) R5 Record per 6 RS 23
  - M Measured

- CORNER MONUMENT NOTES**
- C1 EXISTING FENCE 15' EAST OF CORNER
  - C2 EXISTING FENCE 3' WEST OF CORNER
  - C3 EXISTING FENCE 3' NORTH
  - C4 SET W.C. ON FENCE LINE. CORNER FALLS IN MARSH
  - C5 EXISTING FENCE CORNER S72°14'32"E 14.40'
  - C6 Fd. N12°30'E 3.39'

**LIGHTS CREEK LANE SUBDIVISION**  
A Subdivision of 7 lots within a portion of Section 6 T26N R1E and Section 31 T27N R1E North Arm, Plumas County, CA.

Owner William F. Olding Janet D. Olding.  
Edward C. Seegmiller Virginia M. Seegmiller

Engineer Cliff Brown Engineering & Survey  
2335 Ponderosa  
Quincy, CA. 95971 (916) 283-3959