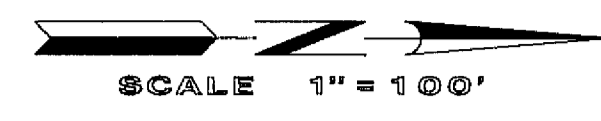
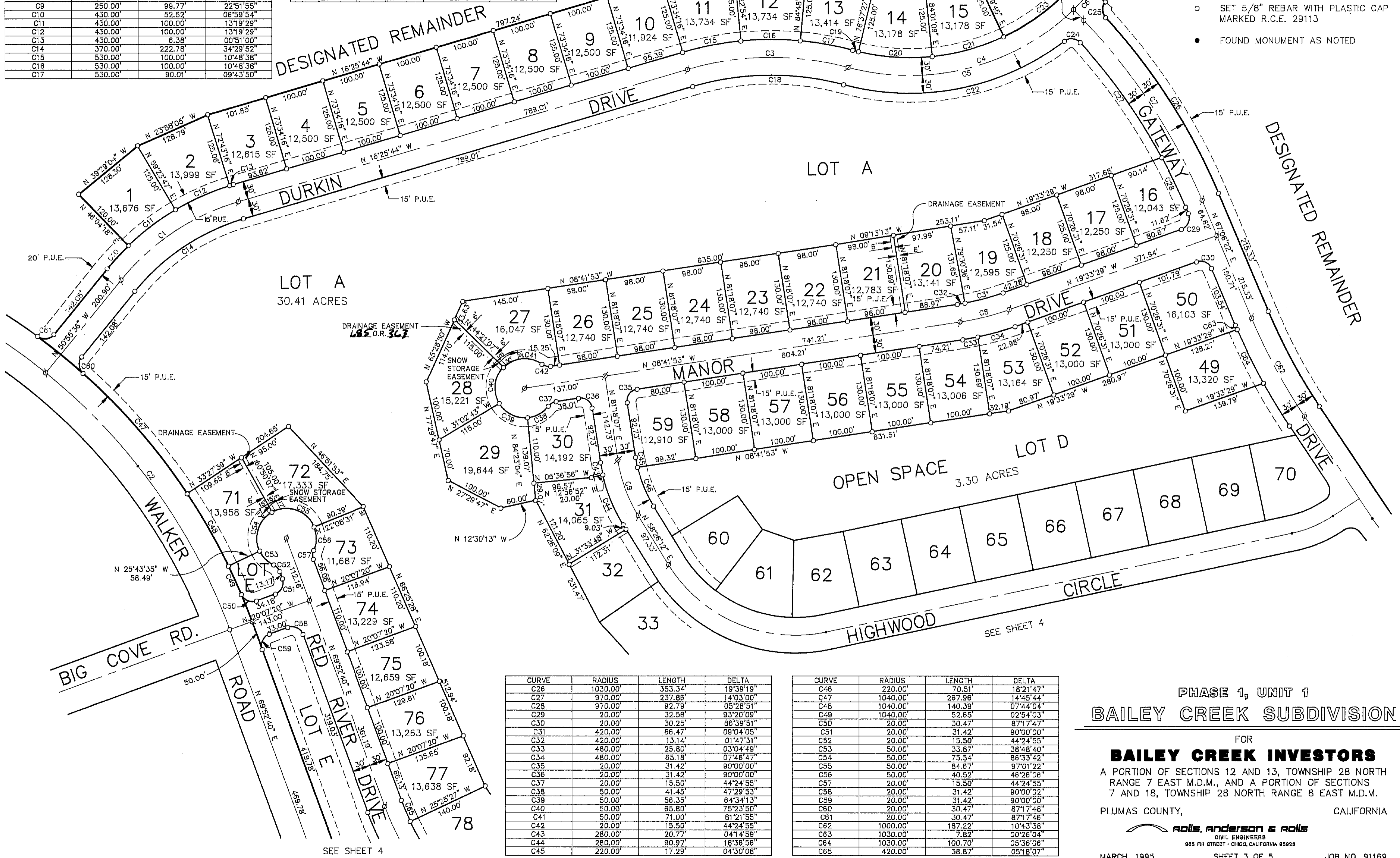


CURVE	RADIUS	LENGTH	DELTA
C1	400.00'	240.84'	34°28'52"
C2	1000.00'	537.84'	30°48'17"
C3	500.00'	273.60'	31°21'06"
C4	400.00'	454.03'	65°02'06"
C5	400.00'	409.70'	58°41'09"
C6	400.00'	44.33'	08°20'57"
C7	1000.00'	364.23'	20°52'08"
C8	450.00'	85.29'	10°51'38"
C9	250.00'	99.77'	22°51'55"
C10	430.00'	52.52'	06°59'54"
C11	430.00'	100.00'	13°19'29"
C12	430.00'	100.00'	13°19'29"
C13	430.00'	6.38'	00°51'00"
C14	370.00'	222.78'	34°29'52"
C15	530.00'	100.00'	10°48'38"
C16	530.00'	100.00'	10°48'38"
C17	530.00'	90.01'	09°43'50"

CURVE	RADIUS	LENGTH	DELTA
C18	470.00'	257.18'	31°21'06"
C19	370.00'	9.99'	01°32'49"
C20	370.00'	125.00'	19°21'24"
C21	370.00'	125.00'	19°21'24"
C22	430.00'	392.31'	52°16'24"
C23	370.00'	262.13'	40°35'31"
C24	20.00'	29.64'	84°55'32"
C25	20.00'	28.78'	82°26'14"



- LEGEND**
- ∅ CALCULATED POINT, NO MONUMENT FOUND OR SET
 - SET 5/8" REBAR WITH PLASTIC CAP MARKED R.C.E. 29113
 - FOUND MONUMENT AS NOTED



CURVE	RADIUS	LENGTH	DELTA
C26	1030.00'	353.34'	19°39'19"
C27	970.00'	237.66'	14°03'00"
C28	970.00'	92.79'	05°28'51"
C29	20.00'	32.58'	93°20'09"
C30	20.00'	30.25'	88°39'51"
C31	420.00'	66.47'	09°04'05"
C32	420.00'	13.14'	01°47'31"
C33	480.00'	25.80'	03°04'49"
C34	480.00'	65.18'	07°46'47"
C35	20.00'	31.42'	90°00'00"
C36	20.00'	31.42'	90°00'00"
C37	20.00'	15.50'	44°24'55"
C38	50.00'	41.45'	47°29'53"
C39	50.00'	56.35'	64°34'13"
C40	50.00'	85.80'	75°23'50"
C41	50.00'	71.00'	81°21'55"
C42	20.00'	15.50'	44°24'55"
C43	280.00'	20.77'	04°14'59"
C44	280.00'	90.97'	18°36'56"
C45	220.00'	17.29'	04°30'08"

CURVE	RADIUS	LENGTH	DELTA
C46	220.00'	70.51'	18°21'47"
C47	1040.00'	267.96'	14°45'44"
C48	1040.00'	140.39'	07°44'04"
C49	1040.00'	52.65'	02°54'03"
C50	20.00'	30.47'	87°17'47"
C51	20.00'	31.42'	90°00'00"
C52	20.00'	15.50'	44°24'55"
C53	50.00'	33.87'	38°48'40"
C54	50.00'	75.54'	86°33'42"
C55	50.00'	84.67'	97°01'22"
C56	50.00'	40.52'	48°26'06"
C57	20.00'	15.50'	44°24'55"
C58	20.00'	31.42'	90°00'02"
C59	20.00'	31.42'	90°00'00"
C60	20.00'	30.47'	87°17'48"
C61	20.00'	30.47'	87°17'46"
C62	1000.00'	187.22'	10°43'38"
C63	1030.00'	7.82'	00°26'04"
C64	1030.00'	100.70'	05°36'06"
C65	420.00'	38.67'	05°18'07"

PHASE 1, UNIT 1
BAILEY CREEK SUBDIVISION

FOR
BAILEY CREEK INVESTORS
A PORTION OF SECTIONS 12 AND 13, TOWNSHIP 28 NORTH
RANGE 7 EAST M.D.M., AND A PORTION OF SECTIONS
7 AND 18, TOWNSHIP 28 NORTH RANGE 8 EAST M.D.M.

PLUMAS COUNTY, CALIFORNIA

