

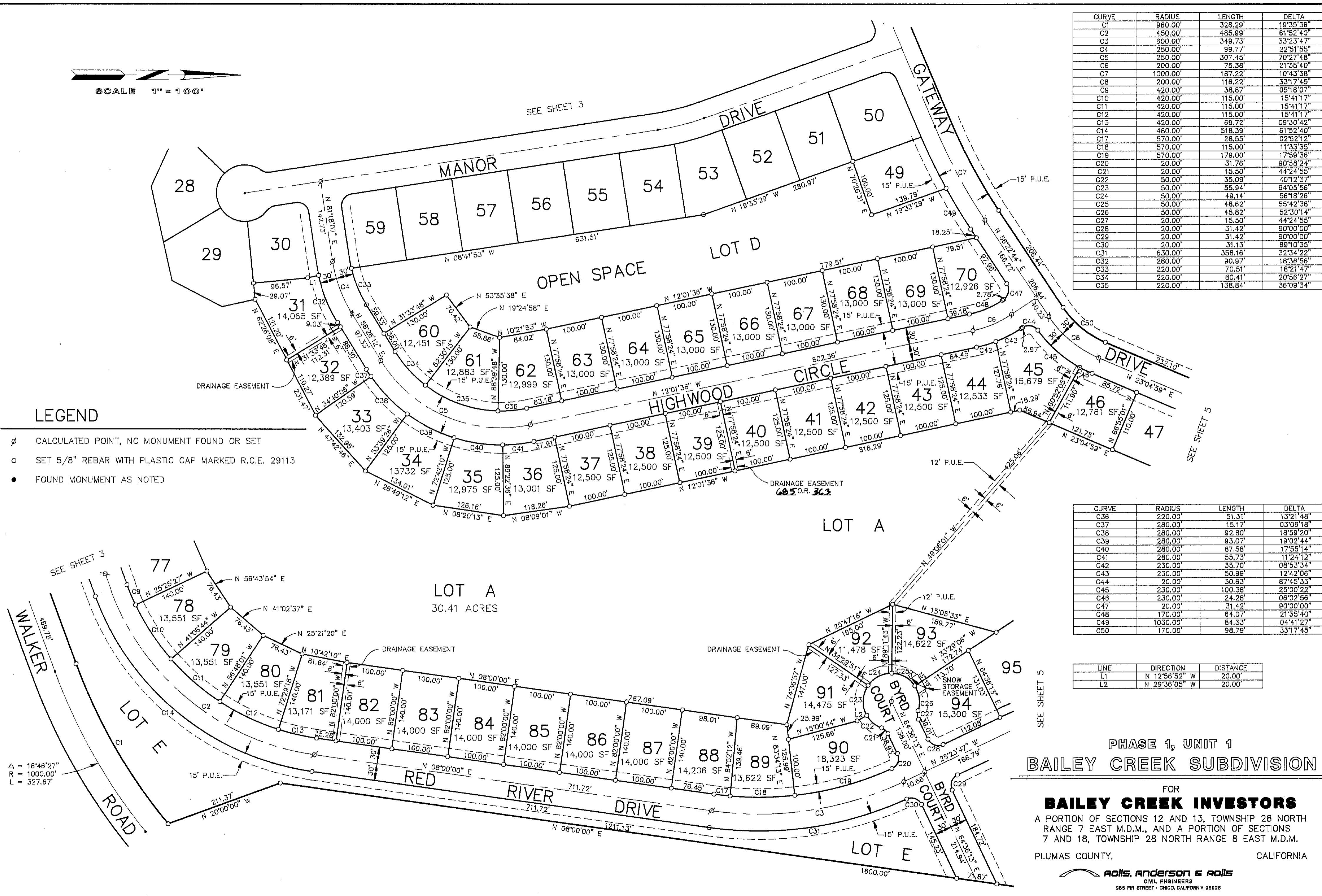


| CURVE | RADIUS | LENGTH | DELTA |
|-------|----------|---------|-----------|
| C1 | 960.00' | 328.29' | 19°35'36" |
| C2 | 450.00' | 485.99' | 61°52'40" |
| C3 | 600.00' | 349.73' | 33°23'47" |
| C4 | 250.00' | 99.77' | 22°51'55" |
| C5 | 250.00' | 307.45' | 70°27'48" |
| C6 | 200.00' | 75.38' | 21°35'40" |
| C7 | 1000.00' | 187.22' | 10°43'38" |
| C8 | 200.00' | 116.22' | 33°17'45" |
| C9 | 420.00' | 38.87' | 05°18'07" |
| C10 | 420.00' | 115.00' | 15°41'17" |
| C11 | 420.00' | 115.00' | 15°41'17" |
| C12 | 420.00' | 115.00' | 15°41'17" |
| C13 | 420.00' | 69.72' | 09°30'42" |
| C14 | 480.00' | 518.39' | 61°52'40" |
| C17 | 570.00' | 28.55' | 02°52'12" |
| C18 | 570.00' | 115.00' | 11°33'35" |
| C19 | 570.00' | 179.00' | 17°59'36" |
| C20 | 20.00' | 31.76' | 90°58'24" |
| C21 | 20.00' | 15.50' | 44°24'55" |
| C22 | 50.00' | 35.09' | 40°12'37" |
| C23 | 50.00' | 55.94' | 64°05'56" |
| C24 | 50.00' | 49.14' | 56°18'26" |
| C25 | 50.00' | 48.62' | 55°42'38" |
| C26 | 50.00' | 45.82' | 52°30'14" |
| C27 | 20.00' | 15.50' | 44°24'55" |
| C28 | 20.00' | 31.42' | 90°00'00" |
| C29 | 20.00' | 31.42' | 90°00'00" |
| C30 | 20.00' | 31.13' | 89°10'35" |
| C31 | 630.00' | 358.16' | 32°34'22" |
| C32 | 280.00' | 90.97' | 18°36'56" |
| C33 | 220.00' | 70.51' | 18°21'47" |
| C34 | 220.00' | 80.41' | 20°56'27" |
| C35 | 220.00' | 138.84' | 36°09'34" |

- LEGEND**
- ∅ CALCULATED POINT, NO MONUMENT FOUND OR SET
 - SET 5/8" REBAR WITH PLASTIC CAP MARKED R.C.E. 29113
 - FOUND MONUMENT AS NOTED

| CURVE | RADIUS | LENGTH | DELTA |
|-------|----------|---------|-----------|
| C36 | 220.00' | 51.31' | 13°21'48" |
| C37 | 280.00' | 15.17' | 03°06'18" |
| C38 | 280.00' | 92.80' | 18°58'20" |
| C39 | 280.00' | 93.07' | 19°02'44" |
| C40 | 280.00' | 87.58' | 17°55'14" |
| C41 | 280.00' | 55.73' | 11°24'12" |
| C42 | 230.00' | 35.70' | 08°53'34" |
| C43 | 230.00' | 50.99' | 12°42'06" |
| C44 | 20.00' | 30.63' | 87°45'33" |
| C45 | 230.00' | 100.38' | 25°00'22" |
| C46 | 230.00' | 24.28' | 06°02'56" |
| C47 | 20.00' | 31.42' | 90°00'00" |
| C48 | 170.00' | 64.07' | 21°35'40" |
| C49 | 1030.00' | 84.33' | 04°41'27" |
| C50 | 170.00' | 98.79' | 33°17'45" |

| LINE | DIRECTION | DISTANCE |
|------|---------------|----------|
| L1 | N 12°56'52" W | 20.00' |
| L2 | N 29°36'05" W | 20.00' |



**PHASE 1, UNIT 1
BAILEY CREEK SUBDIVISION**

FOR
BAILEY CREEK INVESTORS
A PORTION OF SECTIONS 12 AND 13, TOWNSHIP 28 NORTH
RANGE 7 EAST M.D.M., AND A PORTION OF SECTIONS
7 AND 18, TOWNSHIP 28 NORTH RANGE 8 EAST M.D.M.
PLUMAS COUNTY, CALIFORNIA

ROLLS, ANDERSON & ROLLS
CIVIL ENGINEERS
955 FIR STREET • CHICO, CALIFORNIA 95928
MARCH, 1995 SHEET 4 OF 5 JOB NO. 91169