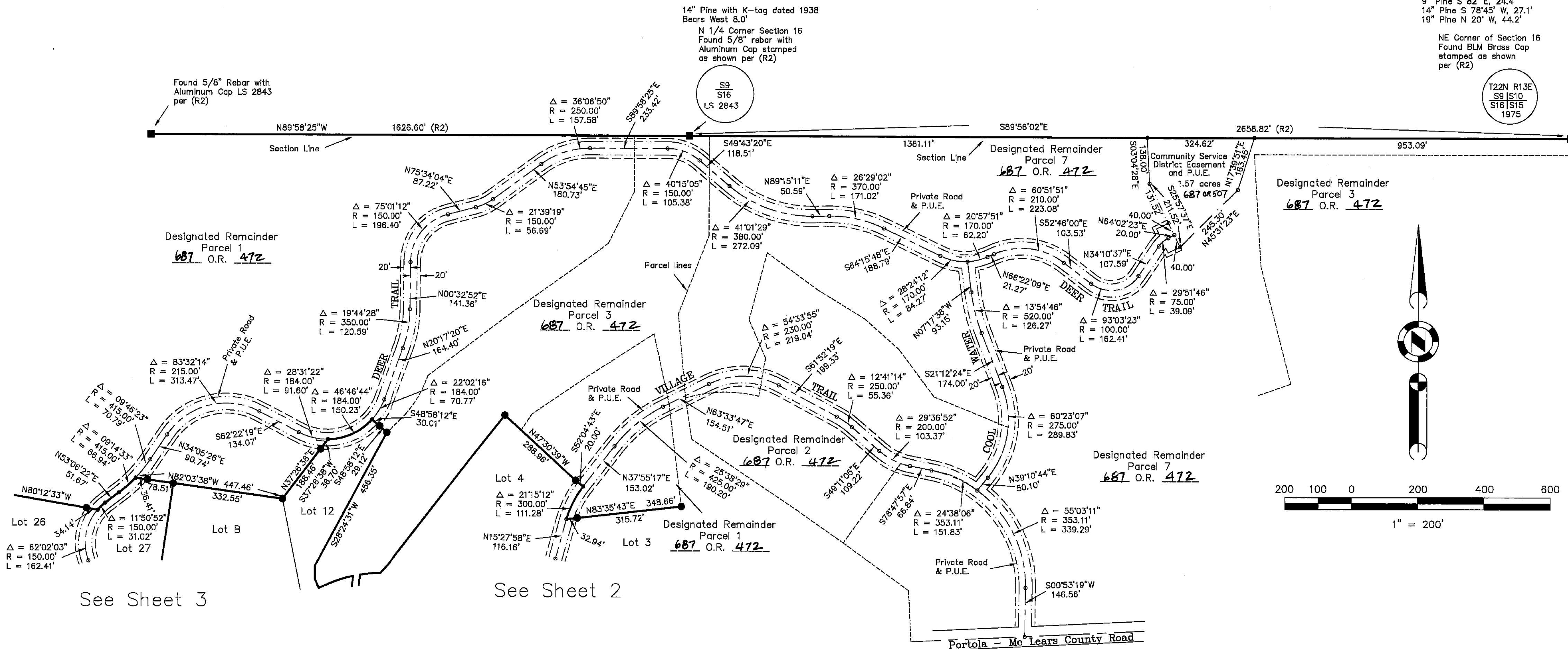


Bearing Trees  
9" Pine S 82° E, 24.4'  
14" Pine S 78°45' W, 27.1'  
19" Pine N 20° W, 44.2'

NE Corner of Section 16  
Found BLM Brass Cap  
stamped as shown  
per (R2)

T22N R13E  
S9 | S10  
S16 | S15  
1975



Found 5/8" Rebar with Aluminum Cap LS 2843 per (R2)

14" Pine with K-tag dated 1938 Bears West 8.0'  
N 1/4 Corner Section 16 Found 5/8" rebar with Aluminum Cap stamped as shown per (R2)

Designated Remainder Parcel 1  
687 O.R. 472

Designated Remainder Parcel 3  
687 O.R. 472

Designated Remainder Parcel 7  
687 O.R. 472

Designated Remainder Parcel 3  
687 O.R. 472

Designated Remainder Parcel 2  
687 O.R. 472

Designated Remainder Parcel 7  
687 O.R. 472

Designated Remainder Parcel 1  
687 O.R. 472

Designated Remainder Parcel 3  
687 O.R. 472

LEGEND

- FOUND point as described
- SET 5/8" rebar with Aluminum Cap LS 2843
- SET 5/8" rebar with Plastic Cap LS 2843
- Nothing Found or Set
- 10' Snowstorage, Landscape & P.U.E. easement
- - - - - Road & P.U.E. easement
- 20' Landscape easement
- (R1) RECORD per 10 RS 83
- (R2) RECORD per 10 RS 85
- P.U.E. Public Utility Easement for Underground Utilities

- GRANT OF EASEMENTS FOR PRIVATE ROADS AND PUBLIC UTILITIES
- 687 OR 498
  - 687 OR 500
  - 687 OR 505
  - 687 OR 510

GOLD MOUNTAIN  
UNIT 1 - PHASE 1 "WINDSONG"  
a Planned Development  
for  
Gold Mountain Ranch, Inc.  
A Portion of Sections 16 & 17  
T. 22 N., R 13 E., M.D.M.  
Plumas County, California  
Scale 1" = 200' May, 1996

Hamby Surveying Inc.  
P.O. Box 1209  
Portola, CA 96122  
(916) 832-5571