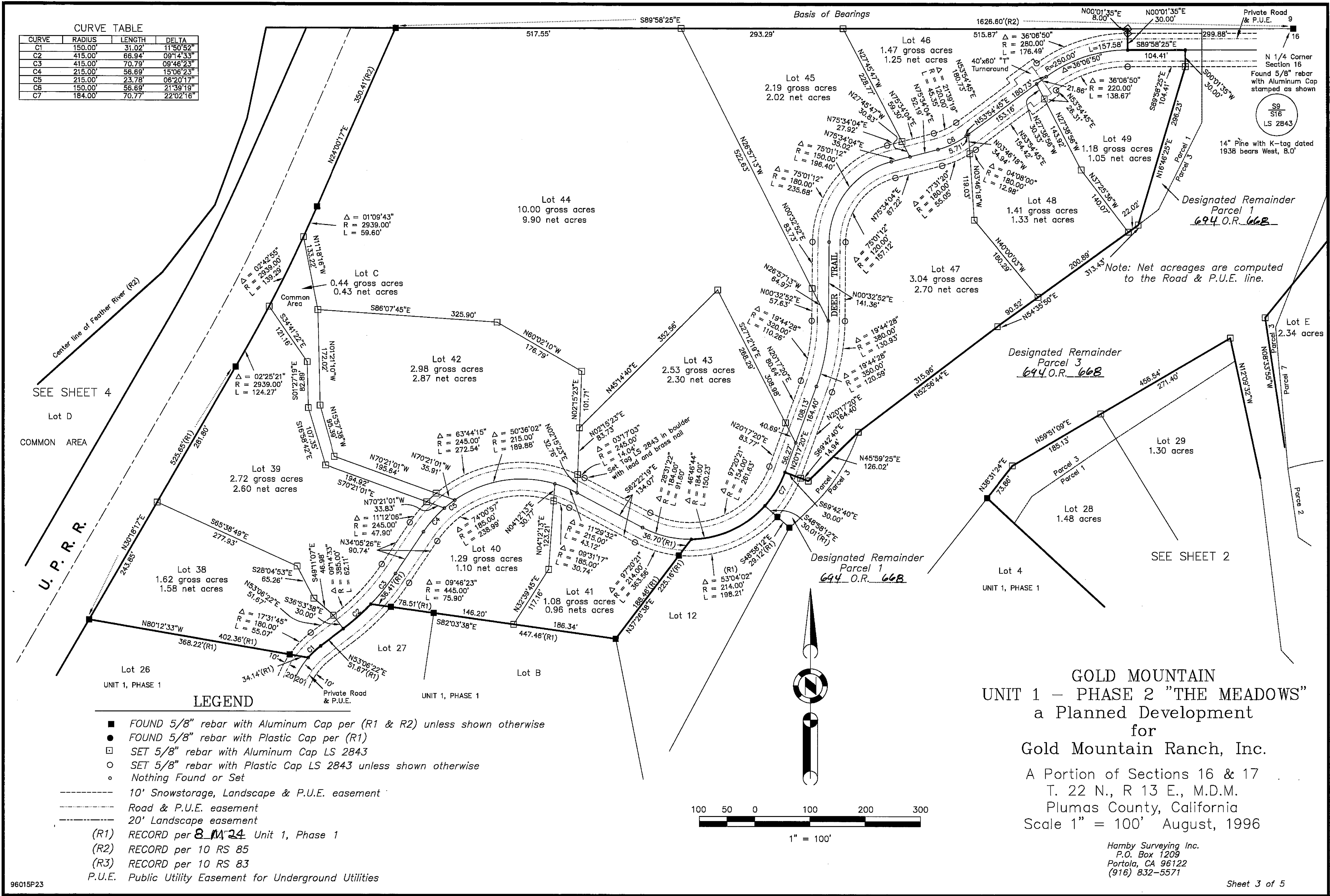


CURVE	RADIUS	LENGTH	DELTA
C1	150.00'	31.02'	11°50'52"
C2	415.00'	66.94'	09°14'33"
C3	415.00'	70.79'	09°46'23"
C4	215.00'	56.69'	15°06'23"
C5	215.00'	23.78'	06°20'17"
C6	150.00'	56.69'	21°39'19"
C7	184.00'	70.77'	22°02'16"



LEGEND

- FOUND 5/8" rebar with Aluminum Cap per (R1 & R2) unless shown otherwise
- FOUND 5/8" rebar with Plastic Cap per (R1)
- ⊠ SET 5/8" rebar with Aluminum Cap LS 2843
- SET 5/8" rebar with Plastic Cap LS 2843 unless shown otherwise
- Nothing Found or Set
- 10' Snowstorage, Landscape & P.U.E. easement
- Road & P.U.E. easement
- 20' Landscape easement
- (R1) RECORD per 8 M 24 Unit 1, Phase 1
- (R2) RECORD per 10 RS 85
- (R3) RECORD per 10 RS 83
- P.U.E. Public Utility Easement for Underground Utilities

GOLD MOUNTAIN
 UNIT 1 - PHASE 2 "THE MEADOWS"
 a Planned Development
 for
 Gold Mountain Ranch, Inc.
 A Portion of Sections 16 & 17
 T. 22 N., R 13 E., M.D.M.
 Plumas County, California
 Scale 1" = 100' August, 1996

Hamby Surveying Inc.
 P.O. Box 1209
 Portola, CA 96122
 (916) 832-5571