

LEGEND

- FOUND point as described
- SET 5/8" rebar with Aluminum Cap LS 2843
- SET 5/8" rebar with Plastic Cap LS 2843
- Nothing Found or Set
- 10' Snowstorage, Landscape & P.U.E. easement
- Road & P.U.E. easement
- 20' Landscape & underground utility easement
- (R1) RECORD per 10 RS 83
- (R2) RECORD per 10 RS 85
- (R3) RECORD per 8 M 24
- P.U.E. Public Utility Easement for Underground Utilities

Basis of Bearings

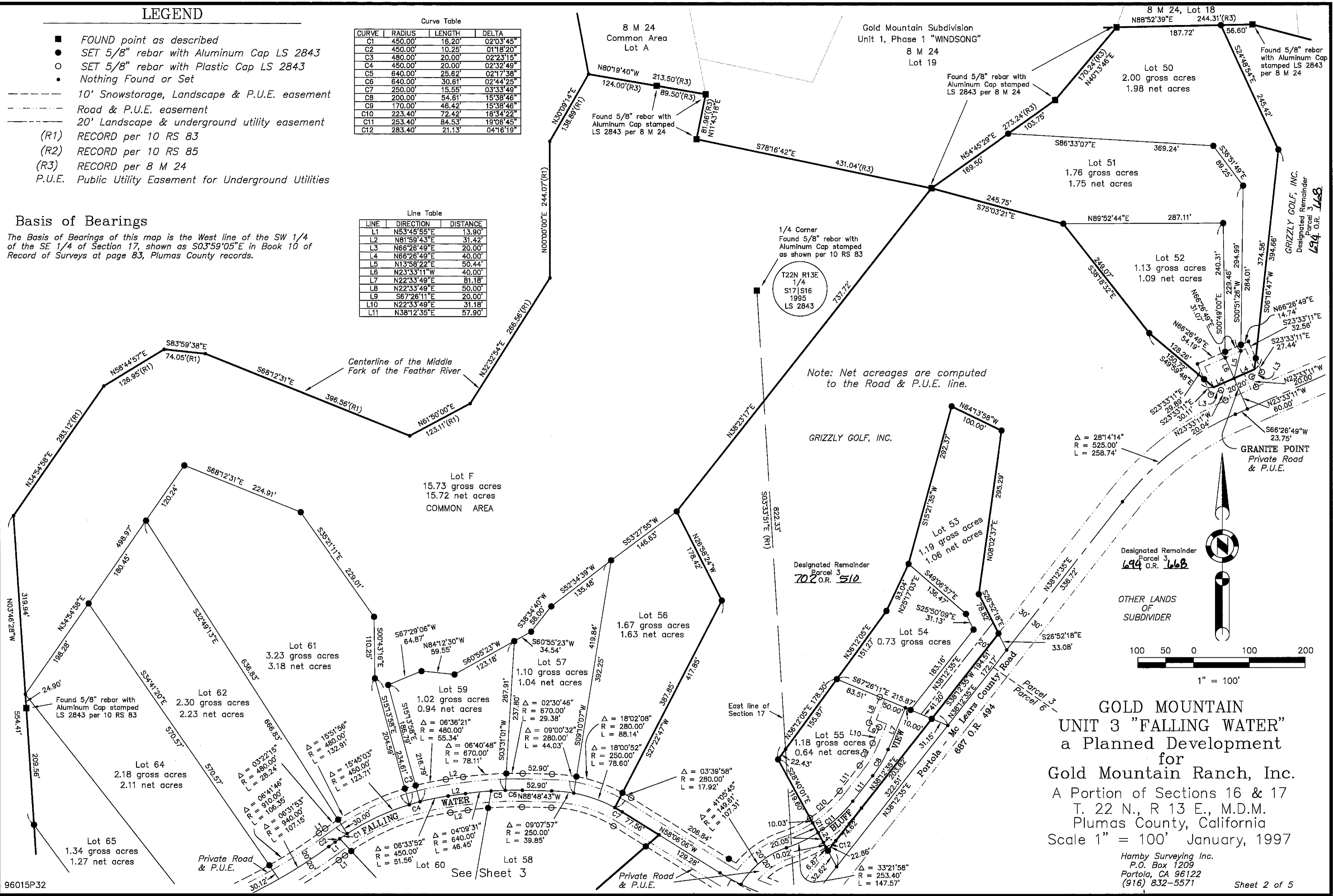
The Basis of Bearings of this map is the West line of the SW 1/4 of the SE 1/4 of Section 17, shown as S03°59'05"E in Book 10 of Record of Surveys at page 83, Plumas County records.

Curve Table

CURVE	RADIUS	LENGTH	DELTA
C1	450.00'	16.20'	02°03'45"
C2	450.00'	10.25'	01°18'20"
C3	480.00'	20.00'	02°23'15"
C4	450.00'	20.00'	02°32'49"
C5	640.00'	25.62'	02°17'38"
C6	640.00'	30.61'	02°44'25"
C7	250.00'	15.55'	03°33'49"
C8	200.00'	54.61'	15°38'46"
C9	170.00'	46.42'	15°38'46"
C10	223.40'	72.42'	18°34'22"
C11	253.40'	84.53'	19°08'45"
C12	283.40'	21.13'	04°16'19"

Line Table

LINE	DIRECTION	DISTANCE
L1	N53°45'55"E	13.90'
L2	N81°59'43"E	31.42'
L3	N66°26'49"E	20.00'
L4	N66°26'49"E	40.00'
L5	N13°58'22"E	50.44'
L6	N23°33'11"W	40.00'
L7	N22°33'49"E	81.18'
L8	N22°33'49"E	50.00'
L9	S67°26'11"E	20.00'
L10	N22°33'49"E	31.18'
L11	N38°12'35"E	57.90'



GOLD MOUNTAIN  
UNIT 3 "FALLING WATER"  
a Planned Development  
for  
Gold Mountain Ranch, Inc.  
A Portion of Sections 16 & 17  
T. 22 N., R 13 E., M.D.M.  
Plumas County, California  
Scale 1" = 100' January, 1997  
Hamby Surveying Inc.  
P.O. Box 1209  
Portola, CA 96122  
(916) 832-5571