

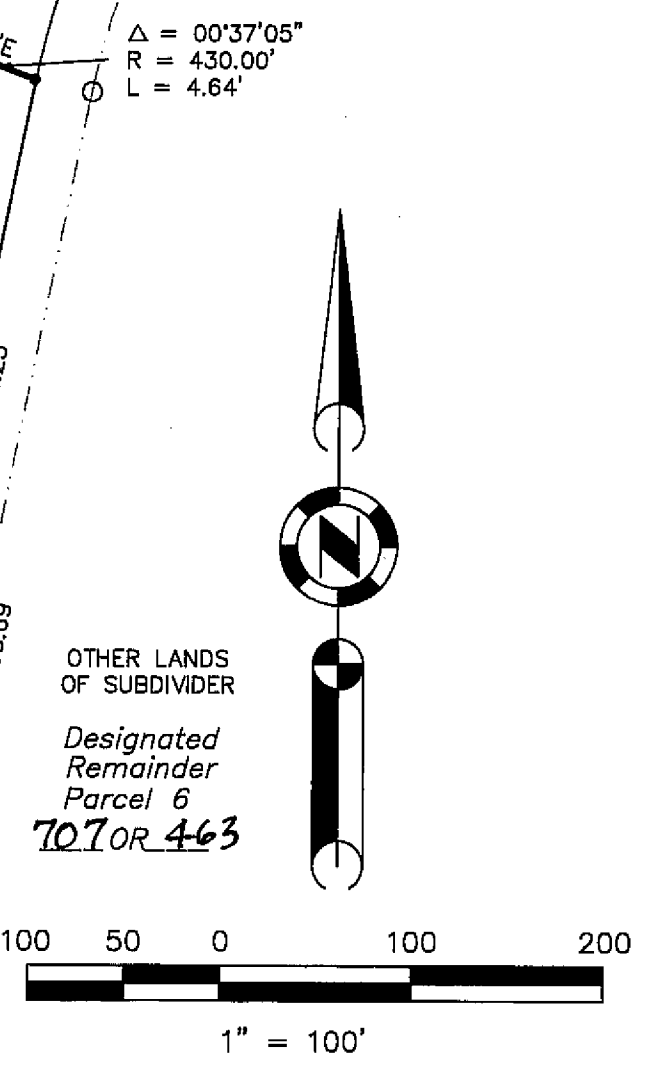
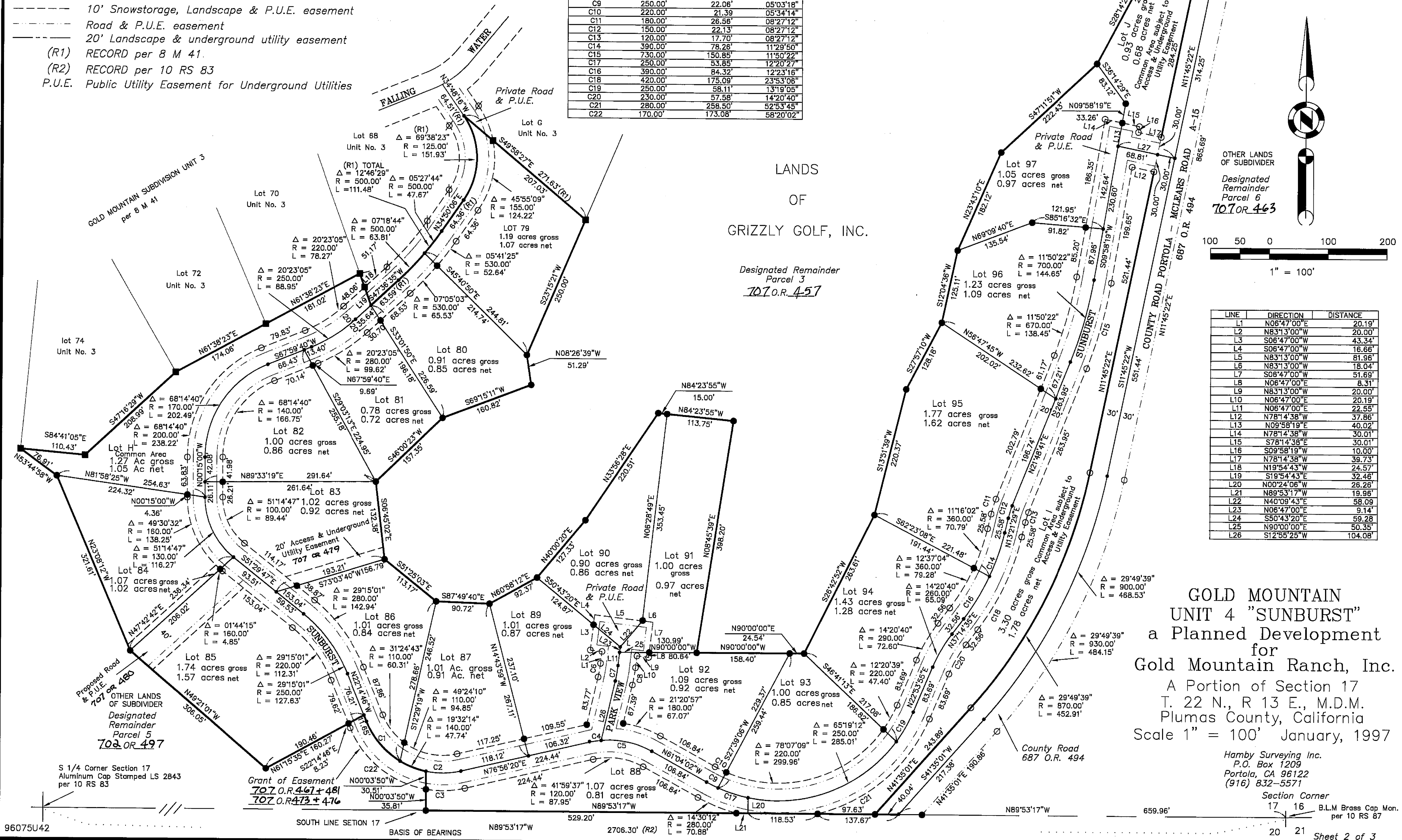
LEGEND

- Found 5/8" rebar with Aluminum Cap LS 2843, per 8 M 41
- ∅ Found 5/8" rebar with Plastic Cap LS 2843, per 8 M 41
- SET 5/8" rebar with Aluminum Cap LS 2843
- SET 5/8" rebar with Plastic Cap LS 2843
- Nothing Found or Set
- - - 10' Snowstorage, Landscape & P.U.E. easement
- - - Road & P.U.E. easement
- - - 20' Landscape & underground utility easement
- (R1) RECORD per 8 M 41.
- (R2) RECORD per 10 RS 83
- P.U.E. Public Utility Easement for Underground Utilities

CURVE	RADIUS	LENGTH	DELTA
C1	140.00'	89.77'	36°44'20"
C2	140.00'	59.95'	24°32'18"
C3	170.00'	66.70'	22°28'52"
C4	150.00'	20.48'	07°49'27"
C5	150.00'	89.45'	34°10'10"
C6	220.00'	23.58'	06°08'25"
C7	250.00'	26.79'	06°08'25"
C8	280.00'	30.01'	06°08'25"
C9	250.00'	22.06'	05°03'18"
C10	220.00'	21.39'	05°34'14"
C11	180.00'	26.56'	08°27'12"
C12	150.00'	22.13'	08°27'12"
C13	120.00'	17.70'	08°27'12"
C14	390.00'	78.26'	11°29'50"
C15	730.00'	150.85'	11°50'22"
C17	250.00'	53.85'	12°20'27"
C16	390.00'	84.32'	12°23'16"
C18	420.00'	175.09'	23°53'06"
C19	250.00'	58.11'	13°19'05"
C20	230.00'	57.58'	14°20'40"
C21	280.00'	258.50'	52°53'45"
C22	170.00'	173.08'	58°20'02"

BASIS OF BEARINGS

The Basis of Bearings for this map is the South line of the SE 1/4 of Section 17, shown as N89°53'17"W on 10 RS 83.



LINE	DIRECTION	DISTANCE
L1	N06°47'00"E	20.19'
L2	N83°13'00"W	20.00'
L3	S06°47'00"W	43.34'
L4	S06°47'00"W	16.66'
L5	N83°13'00"W	81.96'
L6	N83°13'00"W	18.04'
L7	S06°47'00"W	51.69'
L8	N06°47'00"E	8.31'
L9	N83°13'00"W	20.00'
L10	N06°47'00"E	20.19'
L11	N06°47'00"E	22.55'
L12	N78°14'38"W	37.86'
L13	N09°58'19"E	40.02'
L14	N78°14'38"W	30.01'
L15	S78°14'38"E	30.01'
L16	S09°58'19"W	10.00'
L17	N78°14'38"W	39.73'
L18	N19°54'43"W	24.57'
L19	S19°54'43"E	32.46'
L20	N00°24'06"W	26.26'
L21	N89°53'17"W	19.96'
L22	N40°09'43"E	58.09'
L23	N06°47'00"E	9.14'
L24	S50°43'20"E	59.28'
L25	N90°00'00"E	50.35'
L26	S12°55'25"W	104.08'

GOLD MOUNTAIN UNIT 4 "SUNBURST"
 a Planned Development for Gold Mountain Ranch, Inc.
 A Portion of Section 17
 T. 22 N., R 13 E., M.D.M.
 Plumas County, California
 Scale 1" = 100' January, 1997

Hamby Surveying Inc.
 P.O. Box 1209
 Portola, CA 96122
 (916) 832-5571
 Section Corner 17 16 B.L.M Brass Cap Mon. per 10 RS 87
 20 21 Sheet 2 of 3

96075U42