

LEGEND

- Found Point as described
- Found Plastic Cap LS 2843 per 8 M 41
- SET 5/8" rebar with Aluminum Cap LS 2843
- SET 5/8" rebar with Plastic Cap LS 2843
- Nothing Found or Set
- 10' Snowstorage, Landscape & P.U.E. easement
- Road & P.U.E. easement
- (R1) RECORD per 10 RS 83
- (R2) RECORD per 8 M 41
- P.U.E. Public Utility Easement for Underground Utilities

BASIS OF BEARINGS

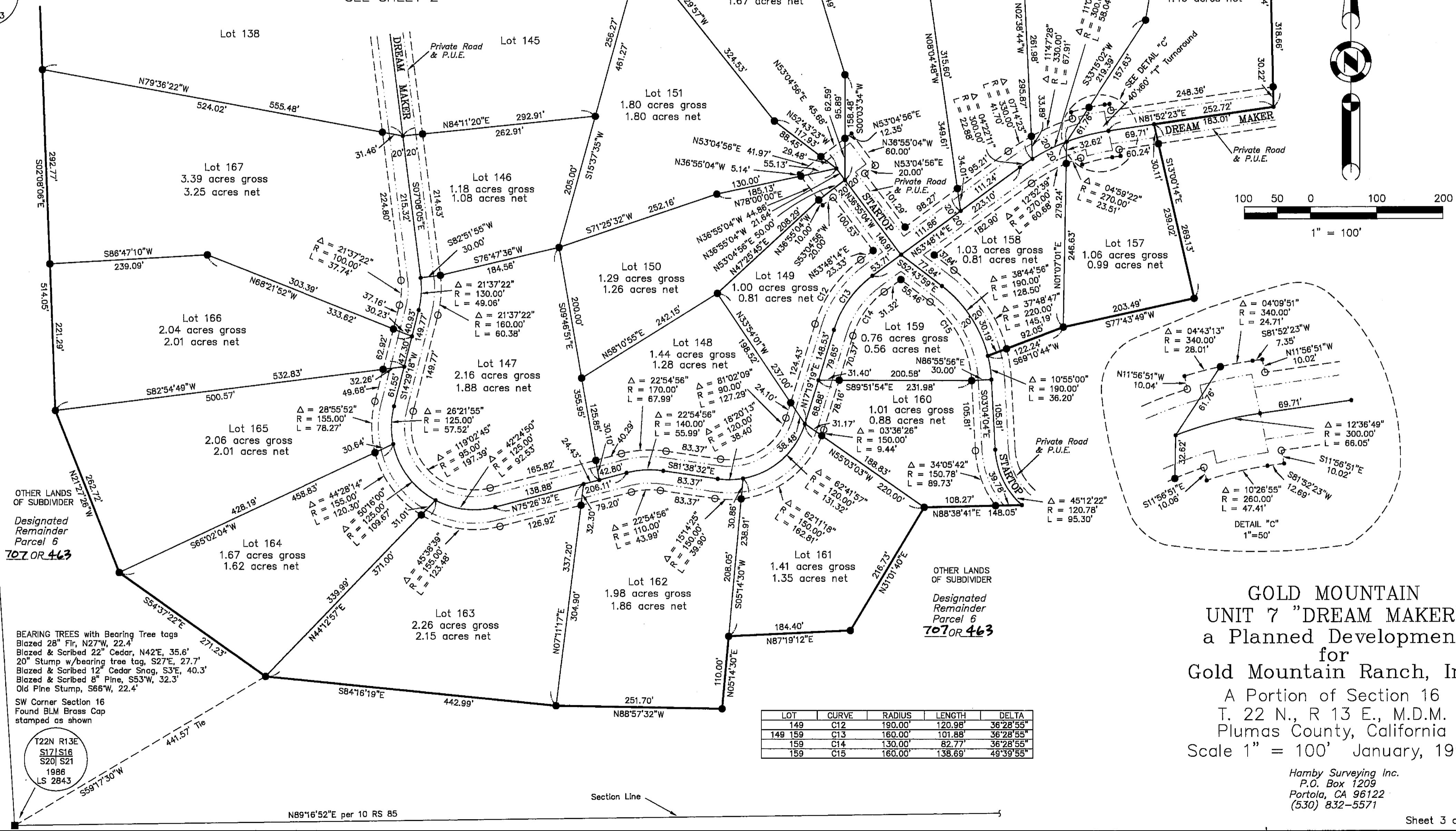
The Basis of Bearings for this map is the West line of the SW 1/4 of Section 16, shown as S03°33'51"E on 10 RS 83.

Bearing Tree tags on 10" Pine N70°03'W, 18.4' 22" Pine S3°24'E, 22.2'

W 1/4 Corner Section 16 Found 5/8" rebar with Aluminum Cap stamped as shown

T22N R13E 1/4 S17|S16 1995 LS 2843

Basis of Bearings



LOT	CURVE	RADIUS	LENGTH	DELTA
149	C12	190.00'	120.98'	36°28'55"
149 159	C13	160.00'	101.88'	36°28'55"
159	C14	130.00'	82.77'	36°28'55"
159	C15	160.00'	138.69'	49°39'55"

GOLD MOUNTAIN UNIT 7 "DREAM MAKER"
 a Planned Development for Gold Mountain Ranch, Inc.
 A Portion of Section 16
 T. 22 N., R 13 E., M.D.M.
 Plumas County, California
 Scale 1" = 100' January, 1998

Hamby Surveying Inc.
 P.O. Box 1209
 Portola, CA 96122
 (530) 832-5571