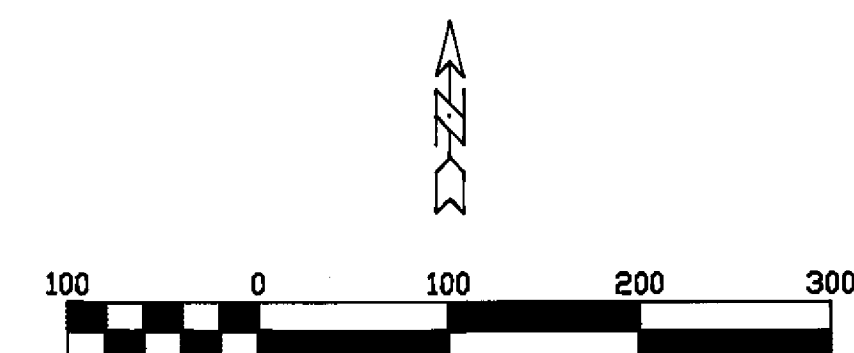
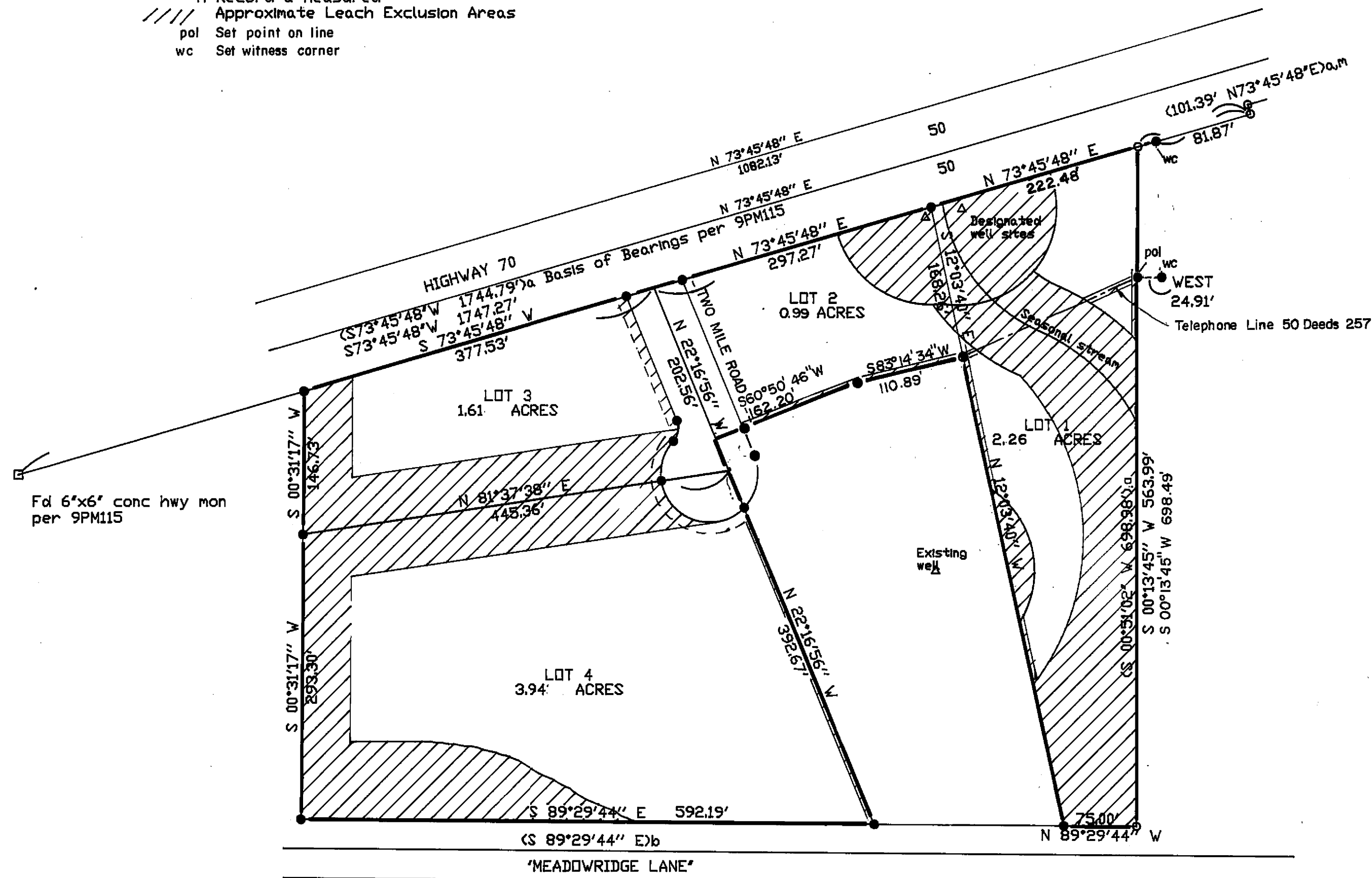


- Legend
- o Fd 1/2" rebar LS 2843 per 9PM115
  - Set 1/2" rebar RCE 22836
  - a Record per 9PM115
  - b Record per 6M37
  - m Record & measured
  - //// Approximate Leach Exclusion Areas
  - pol Set point on line
  - wc Set witness corner



## NOTES:

1. The information shown hereon is for informational purposes describing conditions as of filing and is not intended to affect title interest.
2. The additional information shown hereon is derived from public reports or reports by preparer.
3. Leach exclusion areas include 50' from lot lines without designated well sites, 5' from lot lines with designated well sites, 50' from seasonal watercourses, areas of high groundwater, slopes over 30%, 100 feet from wells and designated well sites, and all easements except as approved by the County Sanitarian.
4. The leach exclusions shown hereon may not be changed without the approval of the County Sanitarian.

## Additional Information Sheet

## 'TWO MILE HOUSE'

A division of four lots

A portion of T22N R13 E Section 3  
at Delleker, Plumas Co., CA

Owner: Roger W. Clark and Bonnie M. Clark, Trustees  
of the CLARK FAMILY LIVING TRUST dated 12-8-89  
Box 518  
Portola, CA 96122 832-4255

Engineer: Cliff Brown Engineering and Survey  
2335 Ponderosa Street  
Quincy, CA. 95971 (916) 283-3959

Oct 1997 CRB Sheet 3 of 3