

GRIZZLY GOLF, INC.

BASIS OF BEARINGS

The Basis of Bearings for this map is the West line of the SE 1/4 of Section 16, shown as N04°52'12"E on 10 RS 85.

Bearing Tree Tags on Blazed & Scribed per (R1)
 13" Pine S21°30'E, 19.8'
 15" Pine S48°W, 20.8'
 W 1/4 Corner Section 15
 Found BLM Brass Cap stamped as shown per (R1)

| LINE | DIRECTION | DISTANCE |
|------|-------------|----------|
| L1 | S18°12'24"E | 30.03' |
| L2 | S18°12'24"E | 30.03' |
| L3 | N69°25'13"E | 30.03' |
| L4 | S18°12'24"E | 30.03' |
| L5 | S18°12'24"E | 30.03' |
| L6 | N69°25'13"E | 30.03' |
| L7 | N69°25'13"E | 30.03' |
| L8 | S18°12'24"E | 72.87' |
| L9 | S18°12'24"E | 46.52' |



OTHER LANDS OF SUBDIVIDER
 Designated Remainder Parcel 6
 707 O.R. 463

GRIZZLY GOLF, INC.
 Designated Remainder Parcel 3
 750 O.R. 096

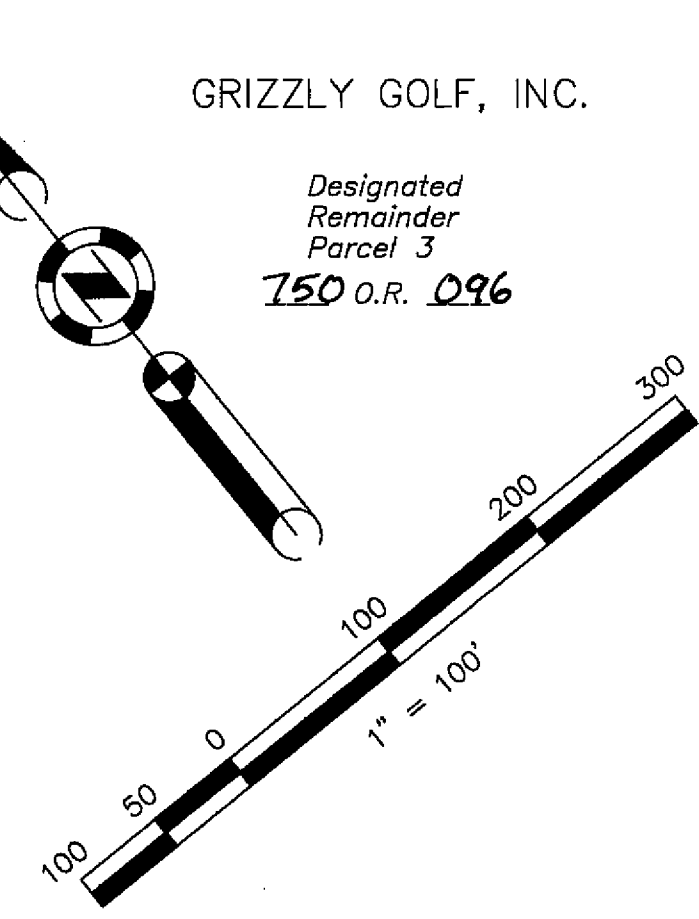
OTHER LANDS OF SUBDIVIDER
 Designated Remainder Parcel 6
 707 O.R. 463

Bearing Trees Blazed & Scribed with Bearing Tree Tags per (R1)
 15" Pine N21°45', 3.9'
 10" Cedar N64°45'E, 27.7'
 7" Pine S3°E, 34.6'
 11" Pine S71°15'W, 38.3'
 SW Corner Section 15
 Found BLM Brass Cap stamped as shown per (R1)

| LOT | CURVE | RADIUS | LENGTH | DELTA |
|---------|-------|---------|---------|-----------|
| 194 213 | C1 | 225.00' | 94.80' | 24°08'24" |
| 194 212 | C2 | 240.00' | 88.15' | 21°02'40" |
| 194 211 | C3 | 240.00' | 141.38' | 33°45'06" |
| 195 211 | C4 | 240.00' | 64.45' | 15°23'13" |
| 195 210 | C5 | 240.00' | 43.49' | 10°22'54" |
| 196 210 | C6 | 400.00' | 45.70' | 06°32'47" |
| 197 210 | C7 | 400.00' | 51.62' | 07°23'37" |
| 210 | C8 | 430.00' | 100.23' | 13°21'17" |
| 210 | C9 | 270.00' | 49.02' | 10°24'07" |
| 197 209 | C10 | 400.00' | 104.26' | 14°56'01" |
| 197 209 | C11 | 150.00' | 70.19' | 26°48'41" |
| 209 | C12 | 430.00' | 116.47' | 15°31'07" |
| 209 | C13 | 120.00' | 49.57' | 23°40'06" |
| 198 208 | C14 | 580.00' | 75.78' | 07°29'10" |
| 199 208 | C15 | 580.00' | 81.08' | 08°00'35" |
| 201 204 | C16 | 270.00' | 117.17' | 24°51'52" |
| 202 204 | C17 | 270.00' | 65.03' | 13°47'57" |

LEGEND

- Found Point as described
- ▲ Found Aluminum Cap LS 2843 per Unit 8 ___M___
- SET 5/8" rebar with Aluminum Cap LS 2843
- SET 5/8" rebar with Plastic Cap LS 2843
- Nothing Found or Set
- 10' Snowstorage, Landscape & P.U.E. easement
- Road & P.U.E. easement
- (R1) RECORD per 10 RS 85
- (R2) RECORD per Unit 8 ___M___
- P.U.E. Public Utility Easement for Underground Utilities



UNIT 8 "REDSKY"
 B.M. 92-95

GOLD MOUNTAIN
 UNIT 9 "GREAT SPIRIT"
 a Planned Development for
 Gold Mountain Ranch, Inc.
 A Portion of Section 16
 T. 22 N., R 13 E., M.D.M.
 Plumas County, California
 Scale 1" = 100' July, 1998

Hamby Surveying Inc.
 P.O. Box 1209
 Portola, CA 96122
 (530) 832-5571