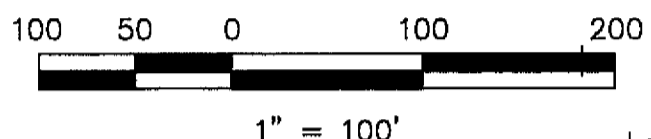


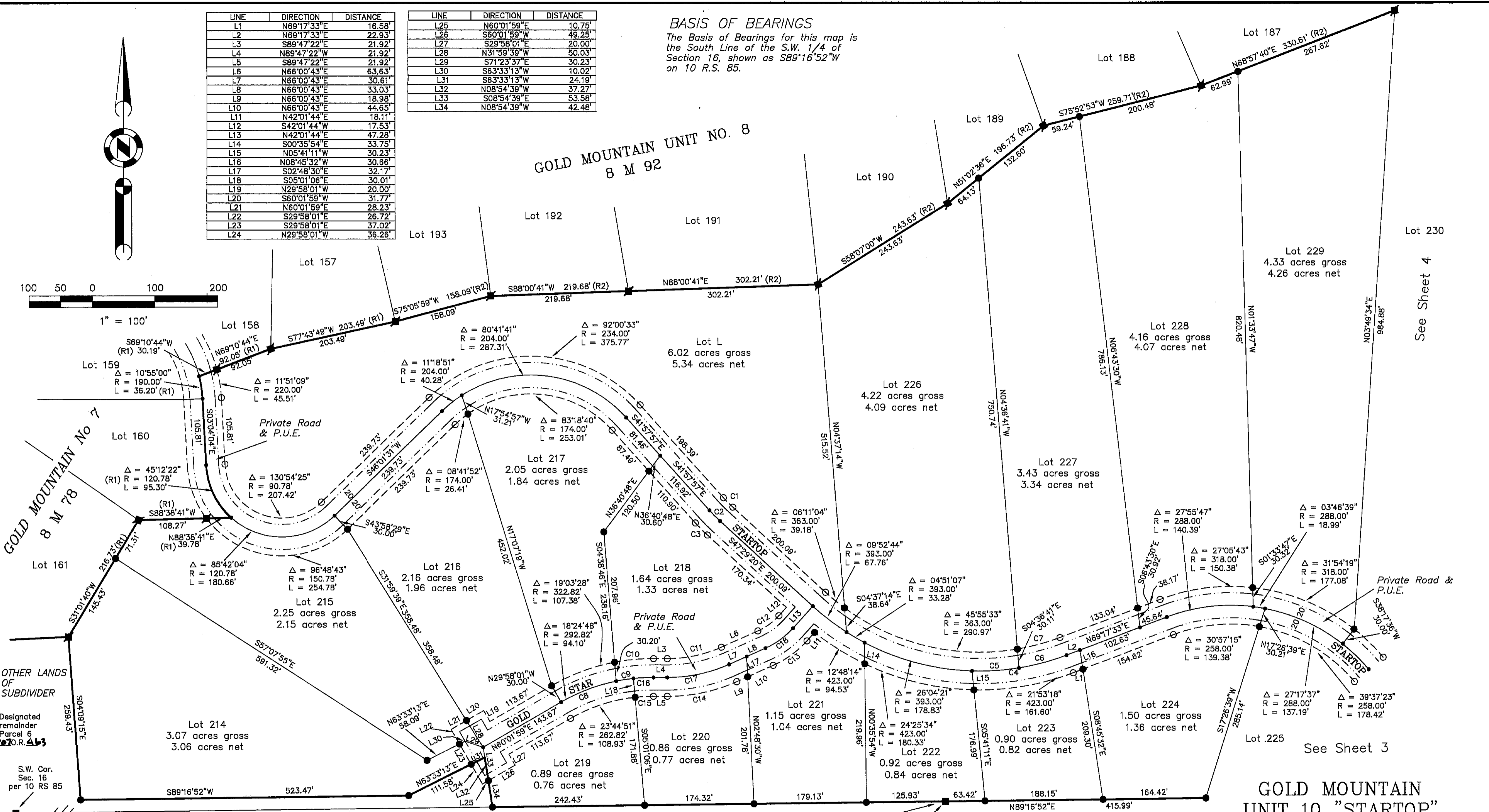
LINE	DIRECTION	DISTANCE
L1	N69°17'33"E	16.58'
L2	N69°17'33"E	22.93'
L3	S89°47'22"E	21.92'
L4	N89°47'22"W	21.92'
L5	S89°47'22"E	21.92'
L6	N66°00'43"E	63.63'
L7	N66°00'43"E	30.61'
L8	N66°00'43"E	33.03'
L9	N66°00'43"E	18.98'
L10	N66°00'43"E	44.65'
L11	N42°01'44"E	18.11'
L12	S42°01'44"W	17.53'
L13	N42°01'44"E	47.28'
L14	S00°35'54"E	33.75'
L15	N05°41'11"W	30.23'
L16	N08°45'32"W	30.86'
L17	S02°48'30"E	32.17'
L18	S05°01'06"E	30.01'
L19	N29°58'01"W	20.00'
L20	S60°01'59"W	31.77'
L21	N60°01'59"E	28.23'
L22	S29°58'01"E	26.72'
L23	S29°58'01"E	37.02'
L24	N29°58'01"W	36.26'

LINE	DIRECTION	DISTANCE
L25	N60°01'59"E	10.75'
L26	S60°01'59"W	49.25'
L27	S29°58'01"E	20.00'
L28	N31°59'39"W	50.03'
L29	S71°23'37"E	30.23'
L30	S63°33'13"W	10.02'
L31	S63°33'13"W	24.19'
L32	N08°54'39"W	37.27'
L33	S08°54'39"E	53.58'
L34	N08°54'39"W	42.48'

**BASIS OF BEARINGS**  
 The Basis of Bearings for this map is the South Line of the S.W. 1/4 of Section 16, shown as S89°16'52"W on 10 R.S. 85.



**GOLD MOUNTAIN UNIT NO. 8**  
 8 M 92



**LEGEND**

- Found Point as described
- Found Aluminum Cap LS 2843 per 8 M 78 & 8 M 92
- SET 5/8" rebar with Aluminum Cap LS 2843
- SET 5/8" rebar with Plastic Cap LS 2843
- Nothing Found or Set
- 10' Snowstorage, Landscape & P.U.E. easement
- Road & P.U.E. easement
- (R1) RECORD per 8 M 78
- (R2) RECORD per 8 M 92
- P.U.E. Public Utility Easement for Underground Utilities

CURVE	RADIUS	LENGTH	DELTA
C1	220.00'	21.21'	05°31'24"
C2	250.00'	24.10'	05°31'24"
C3	280.00'	26.99'	05°31'24"
C4	393.00'	153.75'	22°24'55"
C5	393.00'	74.94'	10°55'33"
C6	393.00'	78.81'	11°29'22"
C7	363.00'	70.37'	11°06'29"
C8	292.82'	94.10'	18°24'48"
C9	292.82'	27.89'	05°27'27"
C10	322.82'	62.65'	11°07'10"
C11	210.00'	88.69'	24°11'55"
C12	100.00'	41.86'	23°58'59"
C13	160.00'	66.97'	23°58'59"
C14	270.00'	114.03'	24°11'55"
C15	262.82'	29.49'	06°25'47"
C16	292.82'	32.23'	06°18'24"
C17	240.00'	101.36'	24°11'55"
C18	130.00'	54.42'	23°58'59"

**GOLD MOUNTAIN UNIT 10 "STARTOP"**  
 a Planned Development for Gold Mountain Ranch, Inc.  
 A Portion of Sections 15 & 16  
 T. 22 N., R 13 E., M.D.M.  
 Plumas County, California  
 Scale 1" = 100' December, 1998

Hamby Surveying Inc.  
 P.O. Box 1209  
 Portola, CA 96122  
 (530) 832-5571