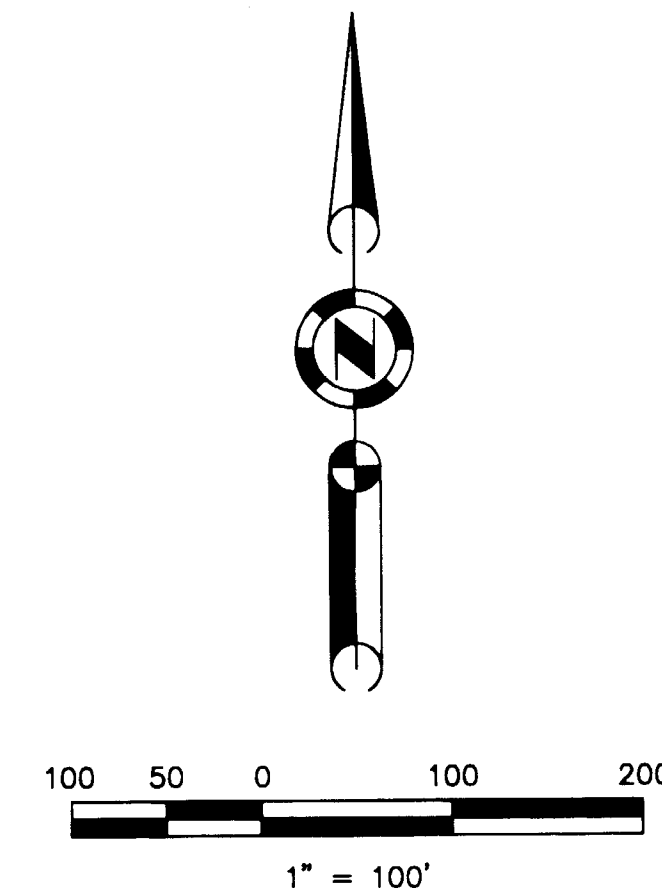


LEGEND

- Found Point as described
- Found Plastic Cap LS 2843 per 8 M 64
- SET 5/8" rebar with Aluminum Cap LS 2843
- SET 5/8" rebar with Plastic Cap LS 2843
- Nothing Found or Set
- 10' Snowstorage, Landscape & P.U.E. easement
- Road & P.U.E. easement
- (R1) RECORD per 10 RS 85
- (R2) RECORD per 8 M 64
- (R3) RECORD per 8 M 102
- P.U.E. Public Utility Easement for Underground Utilities



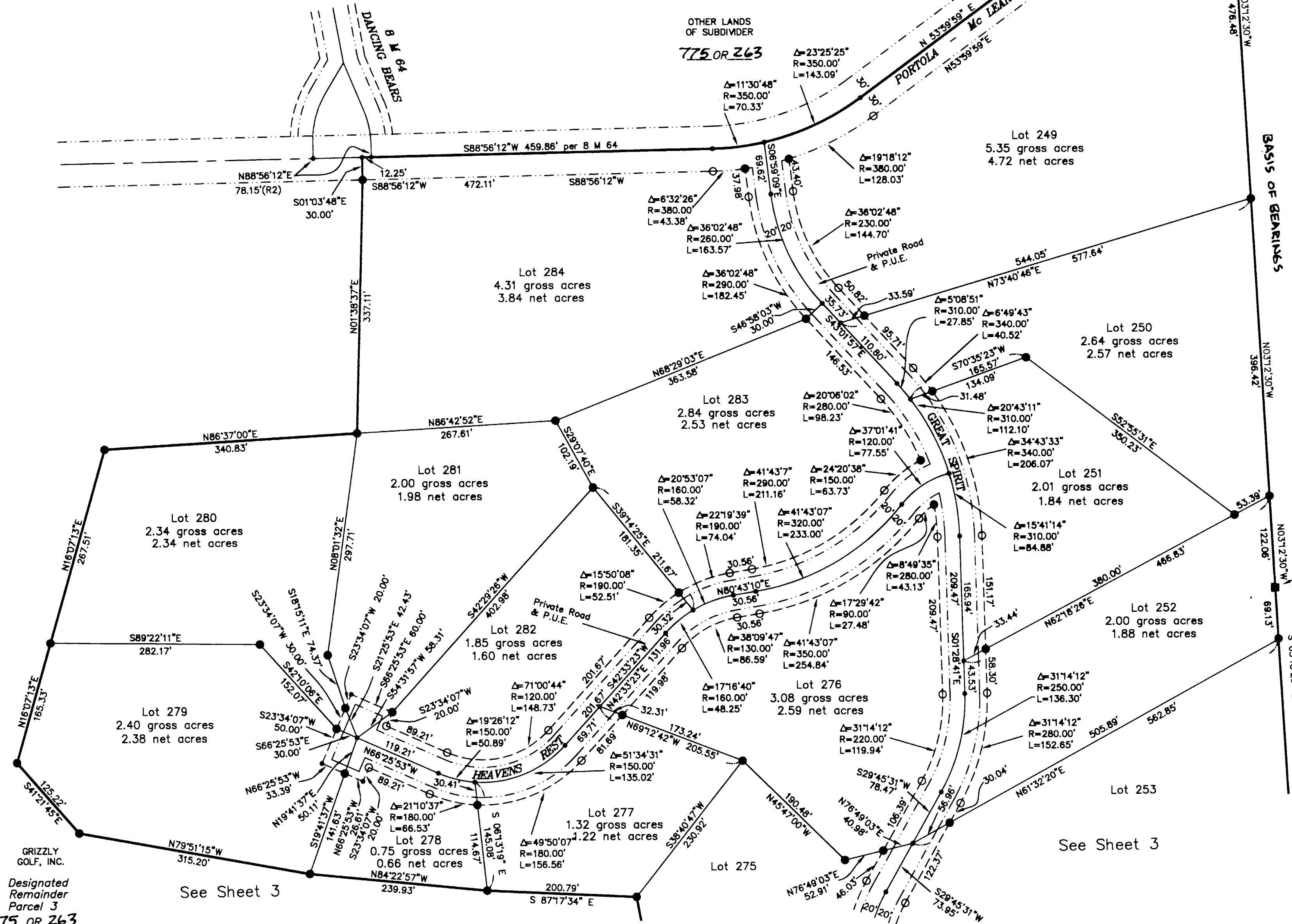
BASIS OF BEARINGS

The basis of bearings of this map is the West line of the SW 1/4 of the NE 1/4 of Section 15, shown as N 03° 12' 30" W in book 10 RS 85, Plumas County Records

C 1/4 Corner Section 15
Found aluminum cap stamped as shown.
per 10 RS 85
C 1/4 S 15
L.S. 2843

GOLD MOUNTAIN
UNIT 11 "NIGHTHAWK"
a Planned Development
for
Gold Mountain Ranch, Inc.
A Portion of Section 15
T. 22 N., R 13 E., M.D.M.
Plumas County, California
Scale 1" = 100' February, 1999

Hamby Surveying Inc.
P.O. Box 1209
Portola, CA 96122
(530) 832-5571



See Sheet 3

See Sheet 3

GRIZZLY GOLF, INC.
Designated Remainder Parcel 3
715 OR 263