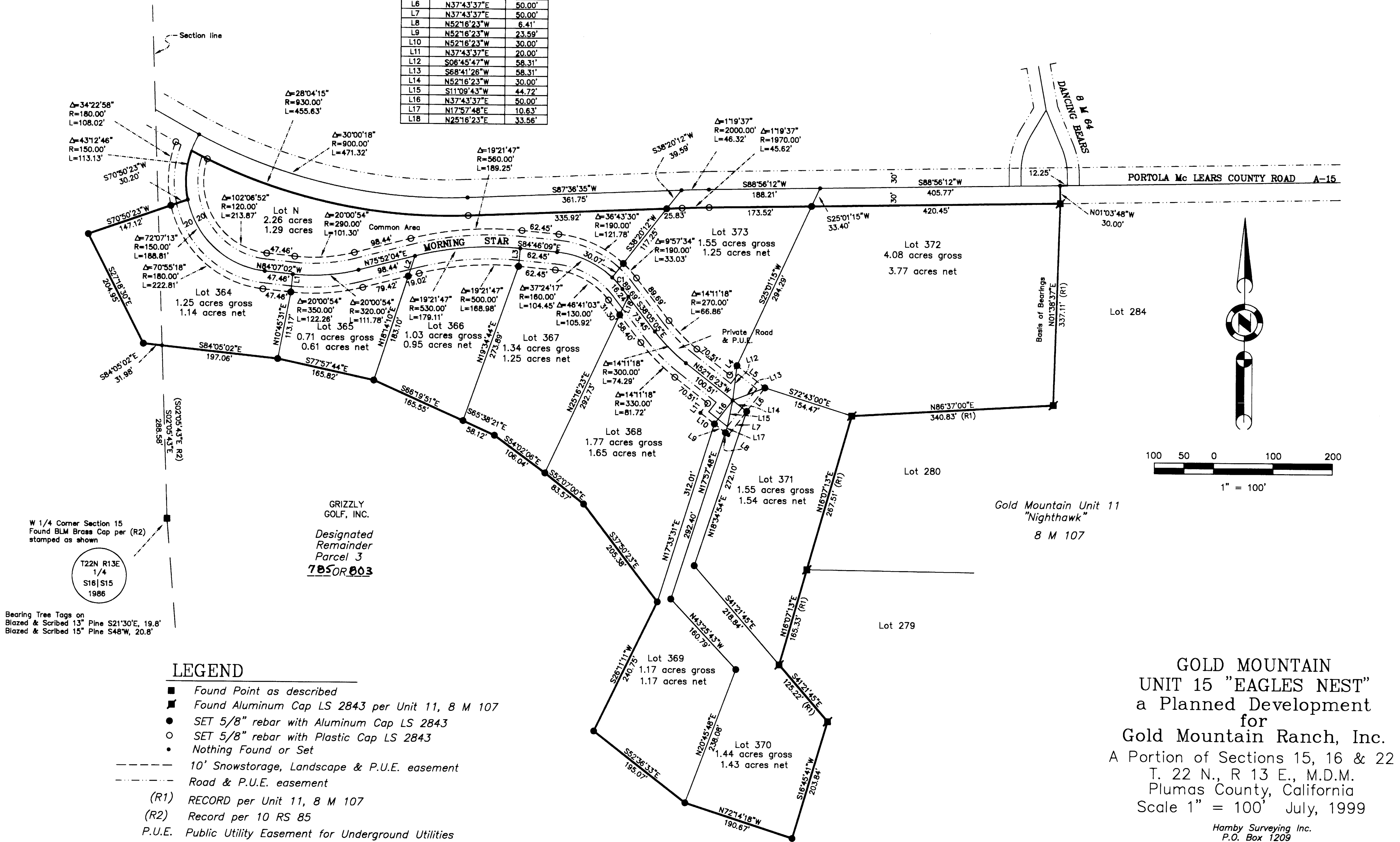


LINE	BEARING	LENGTH
L1	S05°52'58"W	30.00'
L2	N18°14'10"E	35.52'
L3	S05°13'51"W	30.00'
L4	N37°43'37"E	20.00'
L5	S52°16'23"E	60.00'
L6	N37°43'37"E	50.00'
L7	N37°43'37"E	50.00'
L8	N52°16'23"W	6.41'
L9	N52°16'23"W	23.59'
L10	N52°16'23"W	30.00'
L11	N37°43'37"E	20.00'
L12	S08°45'47"W	58.31'
L13	S68°41'26"W	58.31'
L14	N52°16'23"W	30.00'
L15	S11°09'43"W	44.72'
L16	N37°43'37"E	50.00'
L17	N17°57'48"E	10.63'
L18	N25°16'23"E	33.56'

CURVE	DELTA	RADIUS	LENGTH
C1	9°16'47"	160.00'	25.91'

BASIS OF BEARINGS

The Basis of Bearings for this sheet is the West Line of Lot 284, Shown as N01°38'37"E on the map filed in Book 8 M 107.



LEGEND

- Found Point as described
- Found Aluminum Cap LS 2843 per Unit 11, 8 M 107
- SET 5/8" rebar with Aluminum Cap LS 2843
- SET 5/8" rebar with Plastic Cap LS 2843
- Nothing Found or Set
- 10' Snowstorage, Landscape & P.U.E. easement
- - - Road & P.U.E. easement
- (R1) RECORD per Unit 11, 8 M 107
- (R2) Record per 10 RS 85
- P.U.E. Public Utility Easement for Underground Utilities

**GOLD MOUNTAIN
UNIT 15 "EAGLES NEST"
a Planned Development
for
Gold Mountain Ranch, Inc.**
A Portion of Sections 15, 16 & 22
T. 22 N., R 13 E., M.D.M.
Plumas County, California
Scale 1" = 100' July, 1999

Hamby Surveying Inc.
P.O. Box 1209
Portola, CA 96122
(530) 832-5571